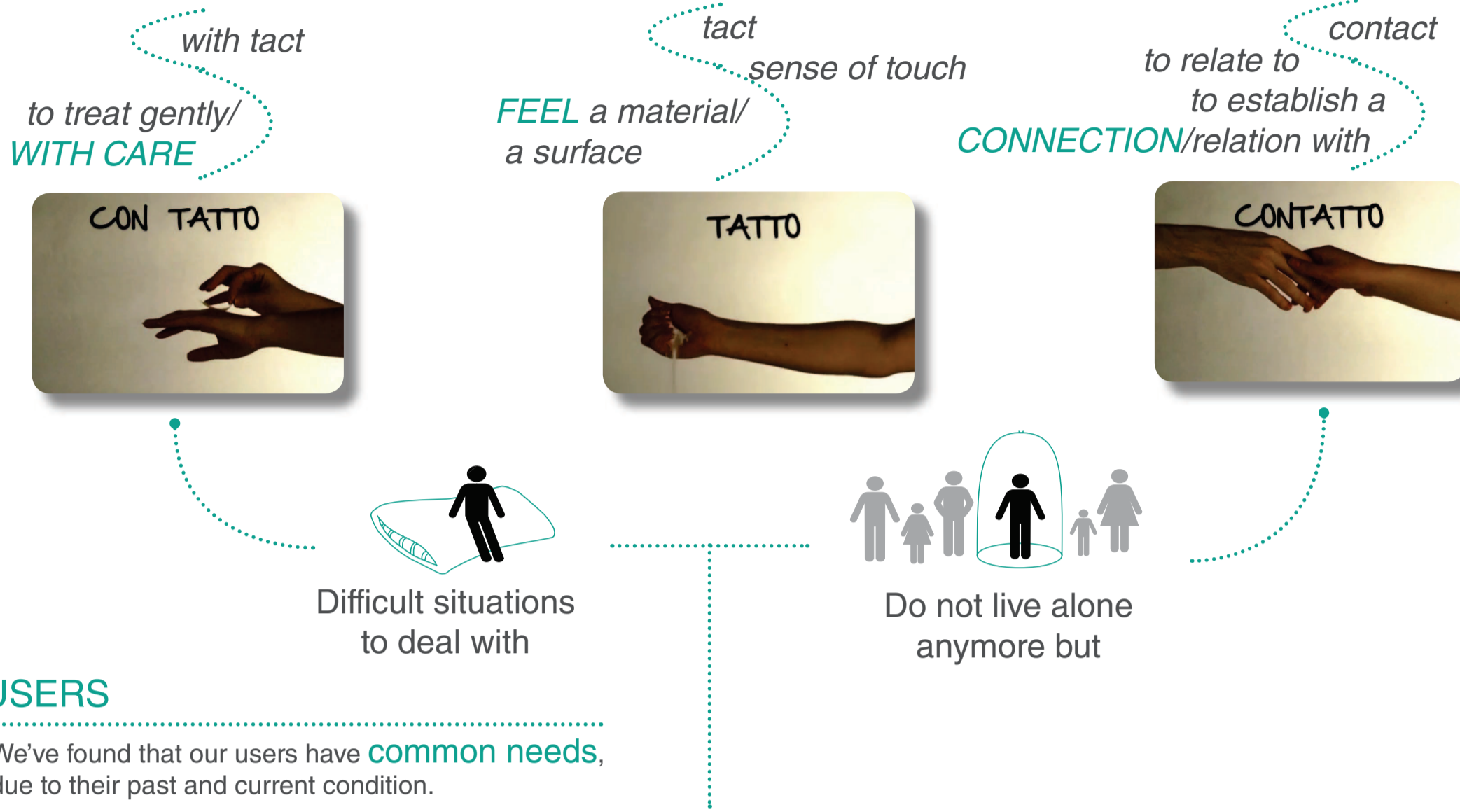


(con)tatto

METAPHOR

Through the analysis of our users, we've created a metaphor that can assume different meanings by the subdivision of its Italian word.



USERS

We've found that our users have common needs, due to their past and current condition.

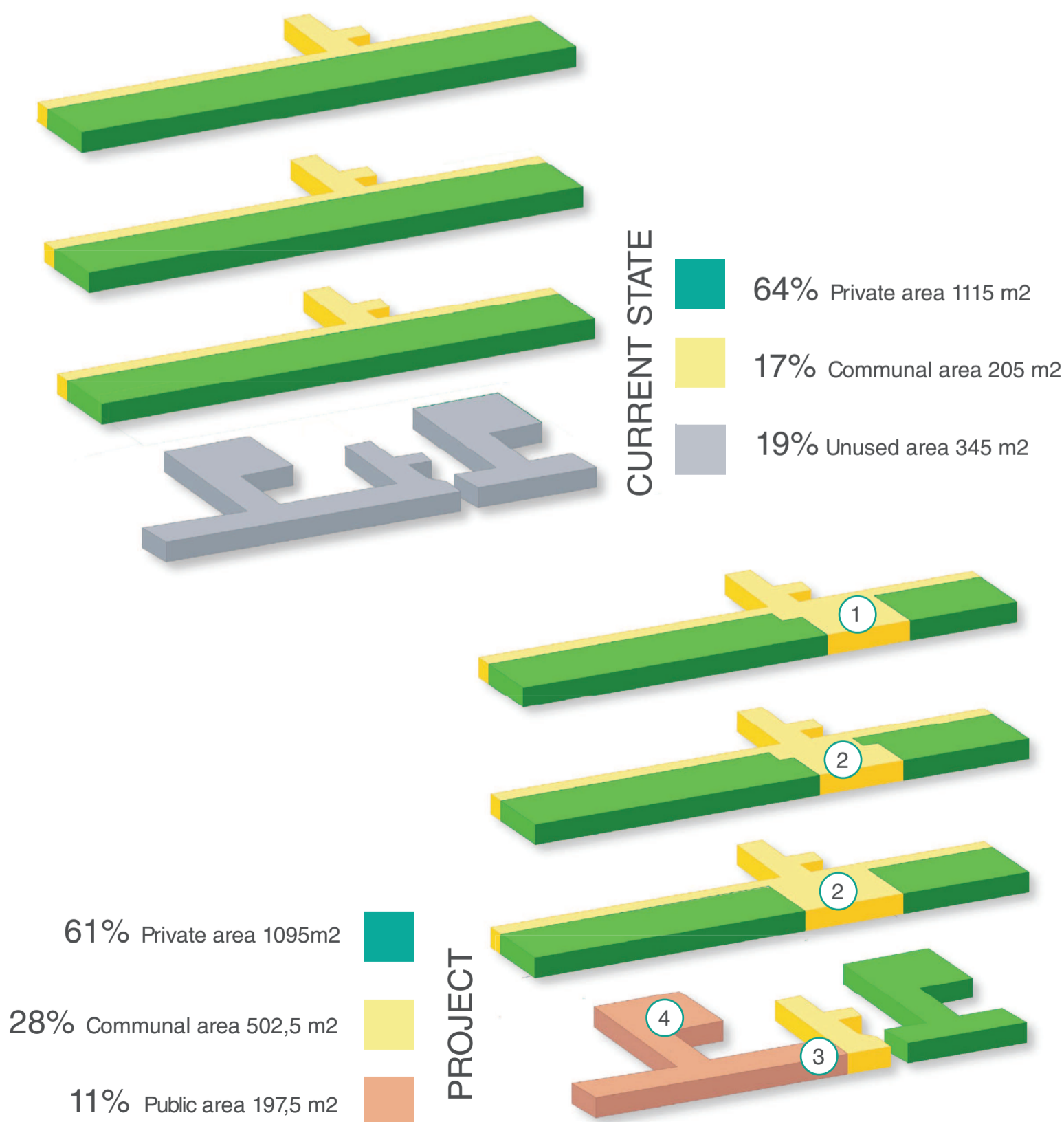
BE INDEPENDENT
socialize
relate to others
FEEL AT HOME
UNDERSTANDING

SINGLE MOTHER

YOUNG WORKER

GUYS FROM REFORMATORY

MASTERPLAN



CASE STUDY

cases for TATTO



WOODEN TEXTILES
ELISA STROZYK
2009

cases for CONTATTO



COVENTRY HUB
HAWKINS BROWN
2011

cases for CON TATTO



BEGINNENHOF
BARBARA BRAKENHOFF
2007

Depending on our users needs, we've designed new kind of areas in the public and common spaces.

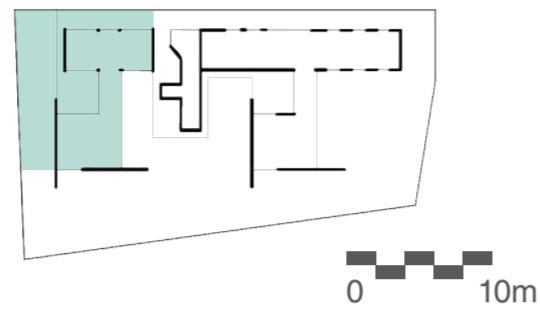
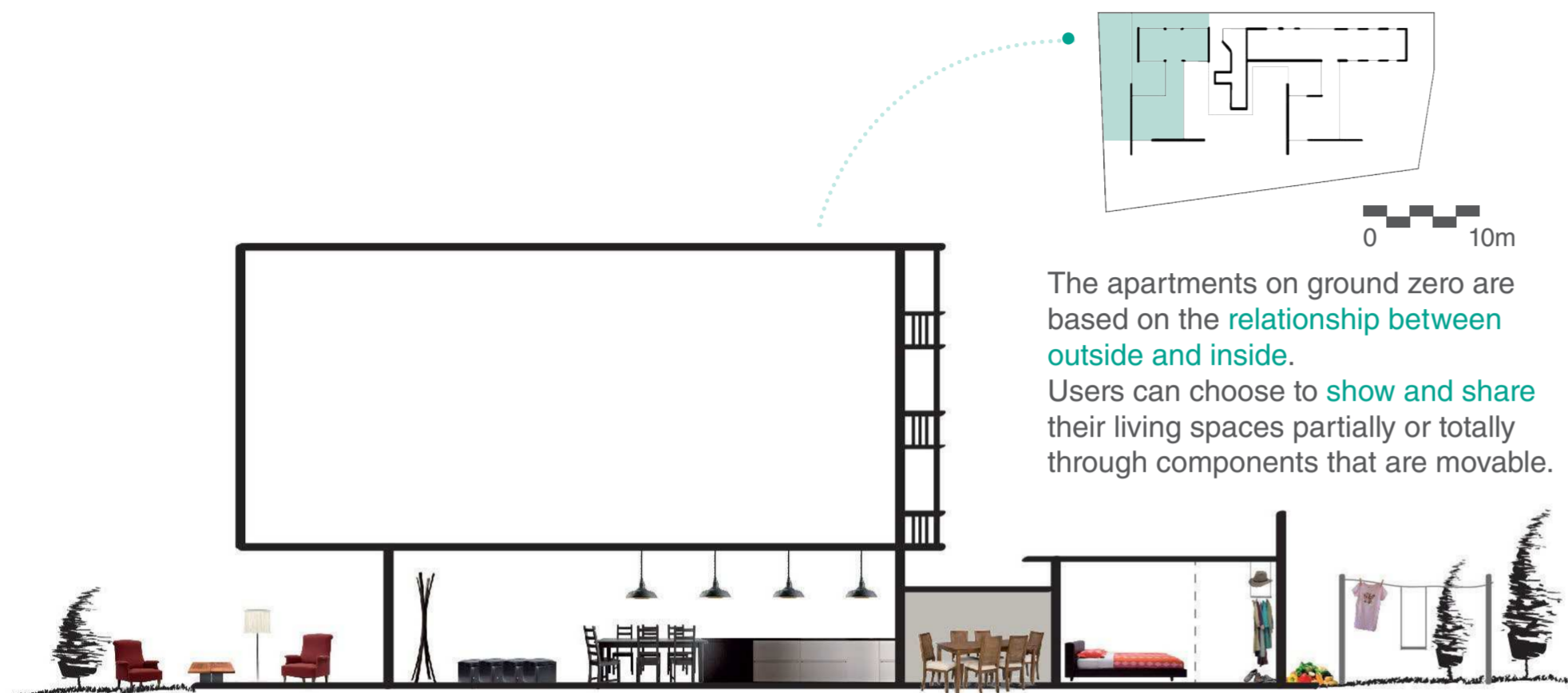
1 **STUDIarea**
It's a place with free wi-fi and workplaces where to study and share personal skills with other residents

2 **GIOCarea**
This area is covered by soft materials so that single mothers' child can play in complete security while other mothers are doing the laundry

3 **CREarea**
This is a laboratory with the essential tools and spaces required to "create something". Residents can assemble their own furniture and teach to the others how to make its.

4 **SVAGarea**
Even if it seems a bar, it's not. It's a place where people can bring food or drinks from home and consume them with other residents here, showing and sharing their personal cooking skills without spending money.

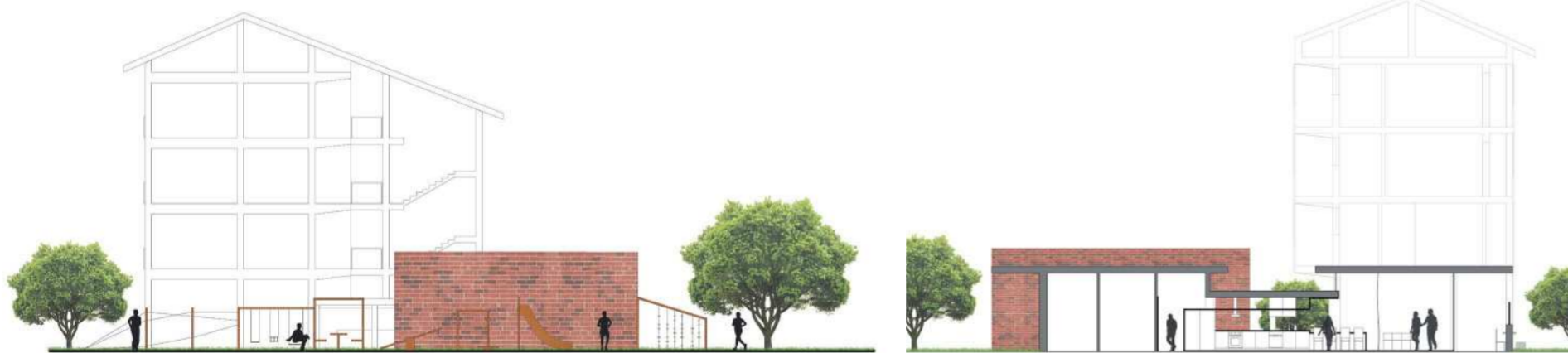
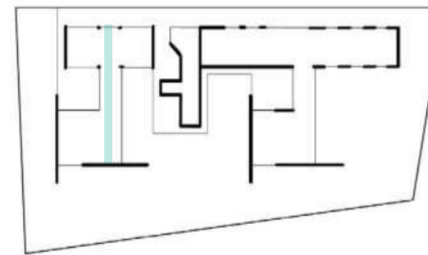
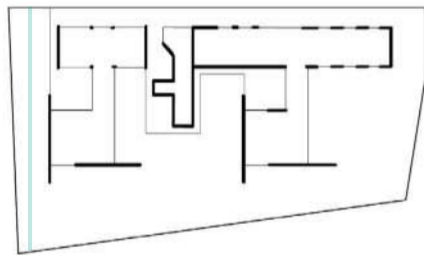
The ground floor



STREET	PORCH	INSIDE	OUTSIDE	INSIDE	GARDEN
living room office	doorway	<ul style="list-style-type: none"> • movable furniture doorway living room dining room kitchen	outdoor dining area	showed wardrobe movable partition	<ul style="list-style-type: none"> • movable tool vegetable garden drying rack bench play area

MOVABLE FURNITURE

MOVABLE TOOL

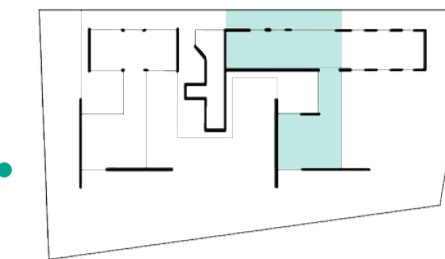
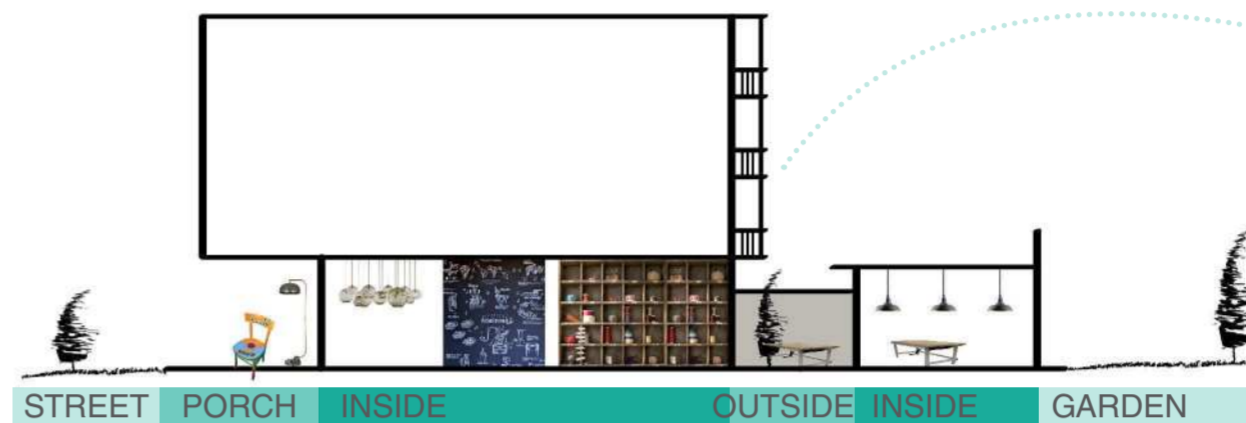


INSPIRING IMAGES



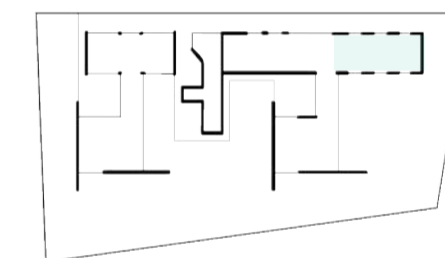
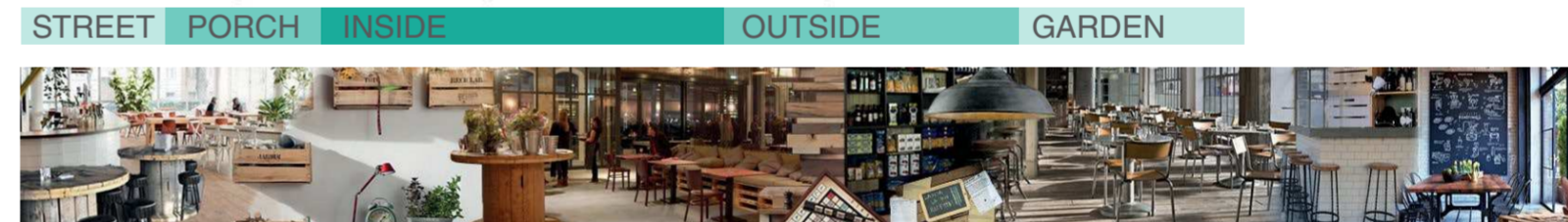
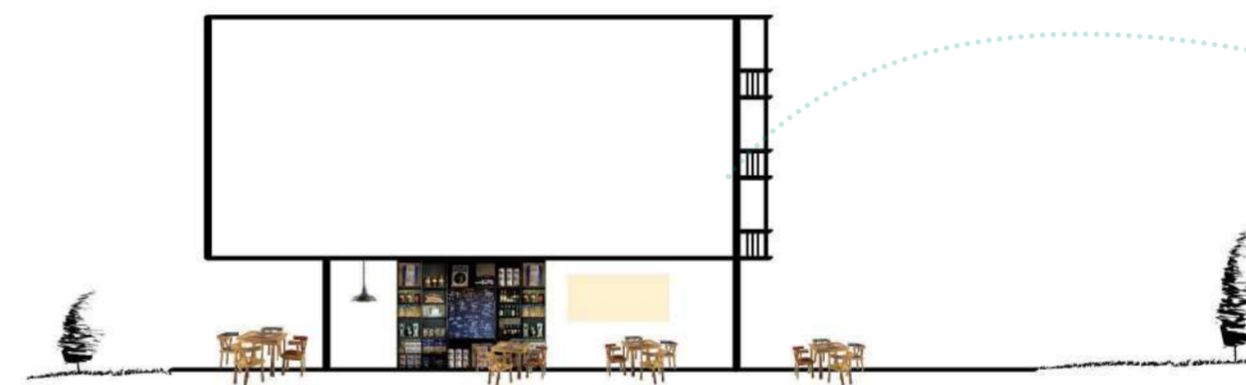
Svagarea and Crearea

TIME LABORATORY



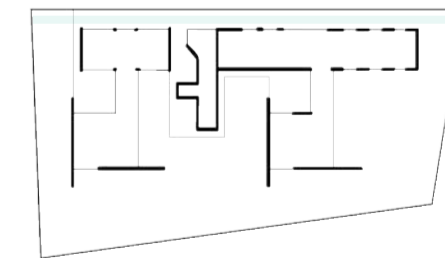
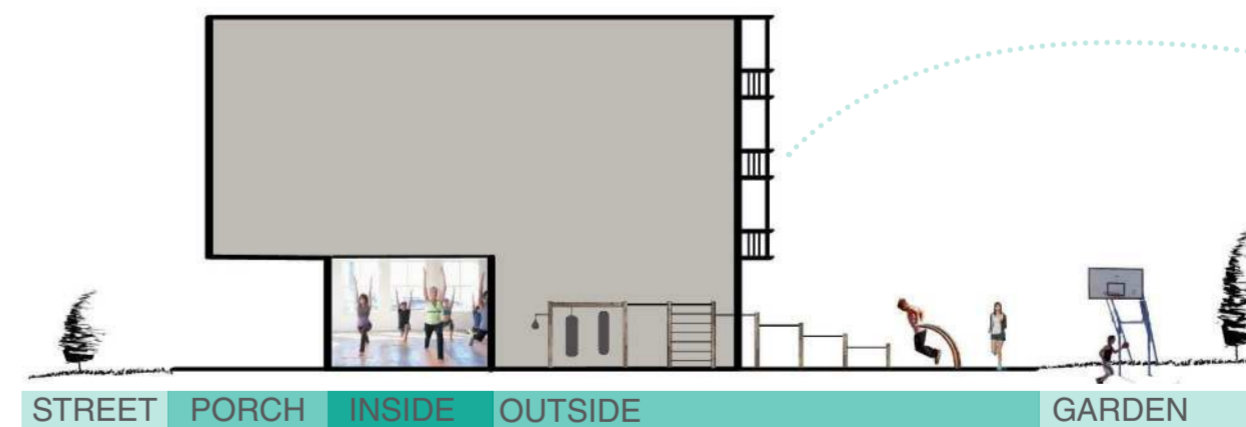
This area, in collaboration with the Milano Niguarda's Time Laboratory, gives the opportunity to **do and teach** how to do different activities based on user's skills.

NONBAR



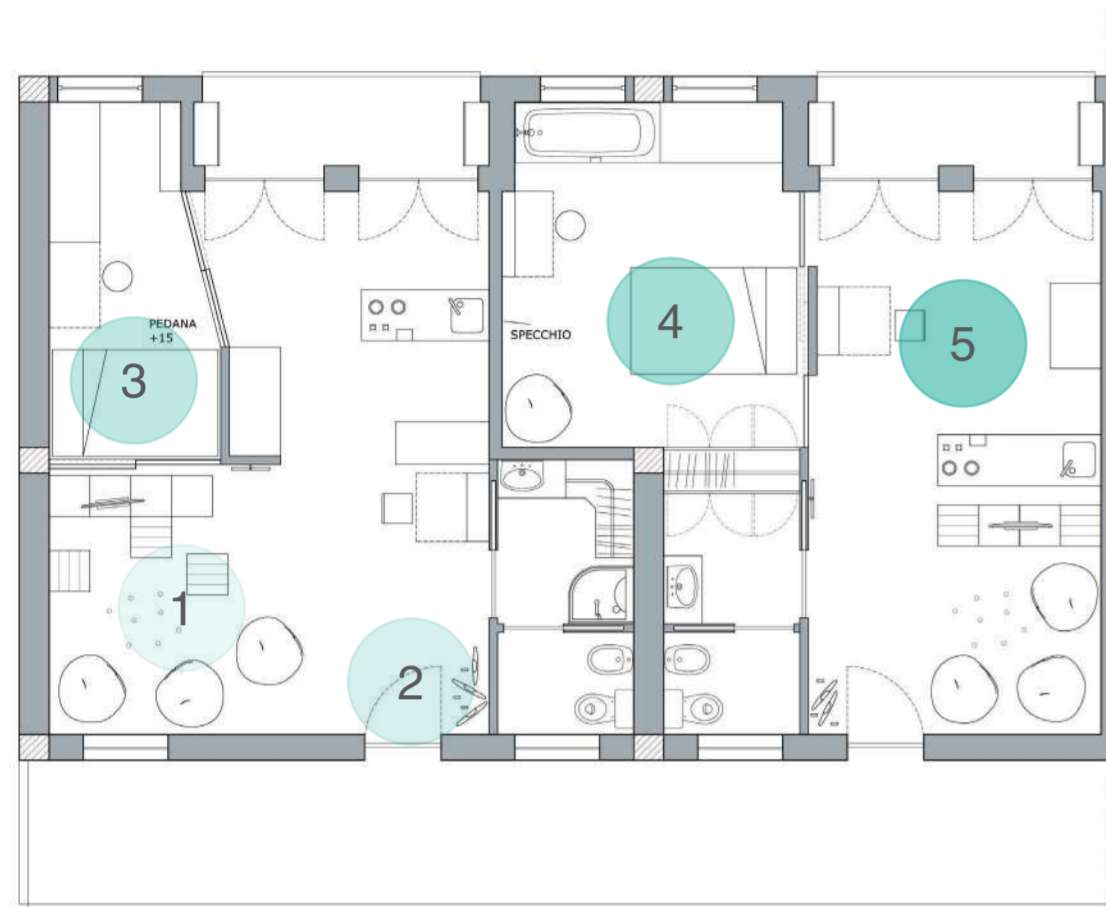
This non-bar is built with raw material based on recycle and reuse. Here, **nothing is sold**: the user itself brings food and drinks making an occasion to socialize with the others through the sharing of its own goods.

TWO WAY



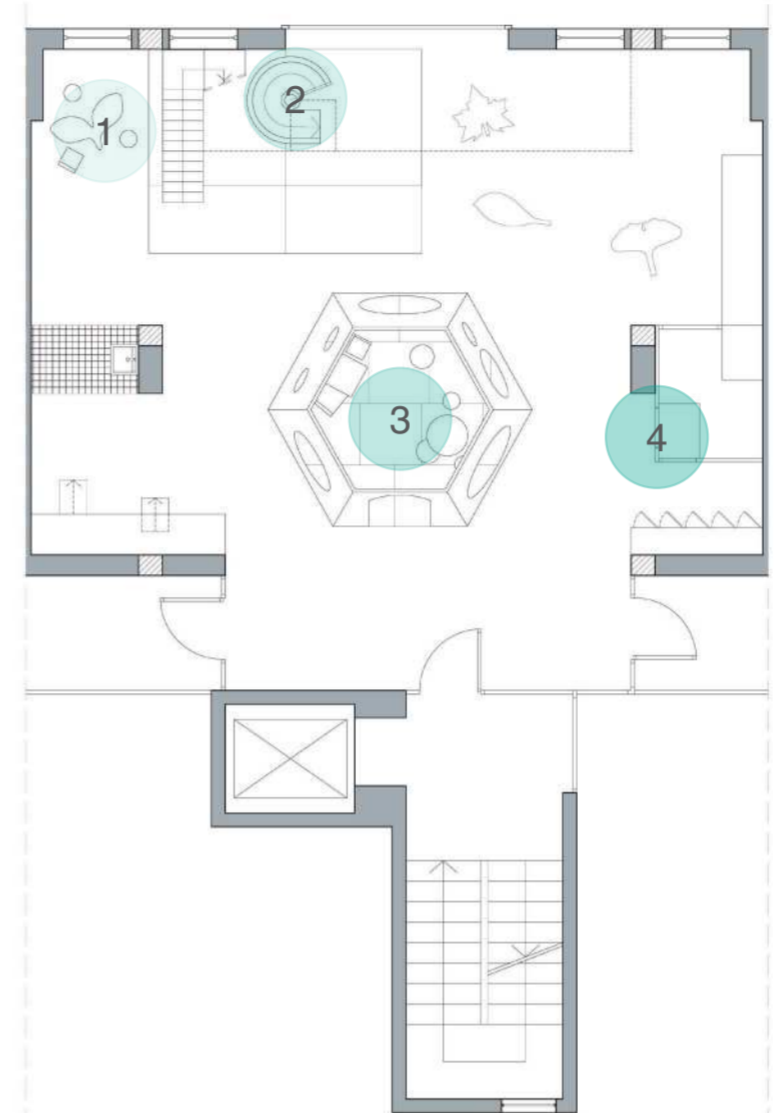
In the garden is placed this itinerary where people can do **different sport activities**. There is also a movable tool that connects the inside gym with the outside area.

First floor houses



- 1 **Living Room**
Based on modular drawers and pillows
- 2 **Doorway**
There are suspended rings where objects can be hung
- 3 **Platform**
Young workers' bedroom are placed on a platform 15 cm height
- 4 **Bedroom**
Young guys from reformatory's bedroom are very big so that they can have their own private space
- 5 **Kitchen**
It's a flexible, open and a lightful space

Giocarea



- 1 The floor is made with resin without angles
- 2 A big green slide connects the first and the second floor
- 3 In the middle of Giocarea there is a construction called "tree" where adults can work or study while child are playing
- 4 Different pieces of furniture has different sizes in order to make places "to be explored"



RENDERINGS



View on the kitchen and bedroom



View from doorway

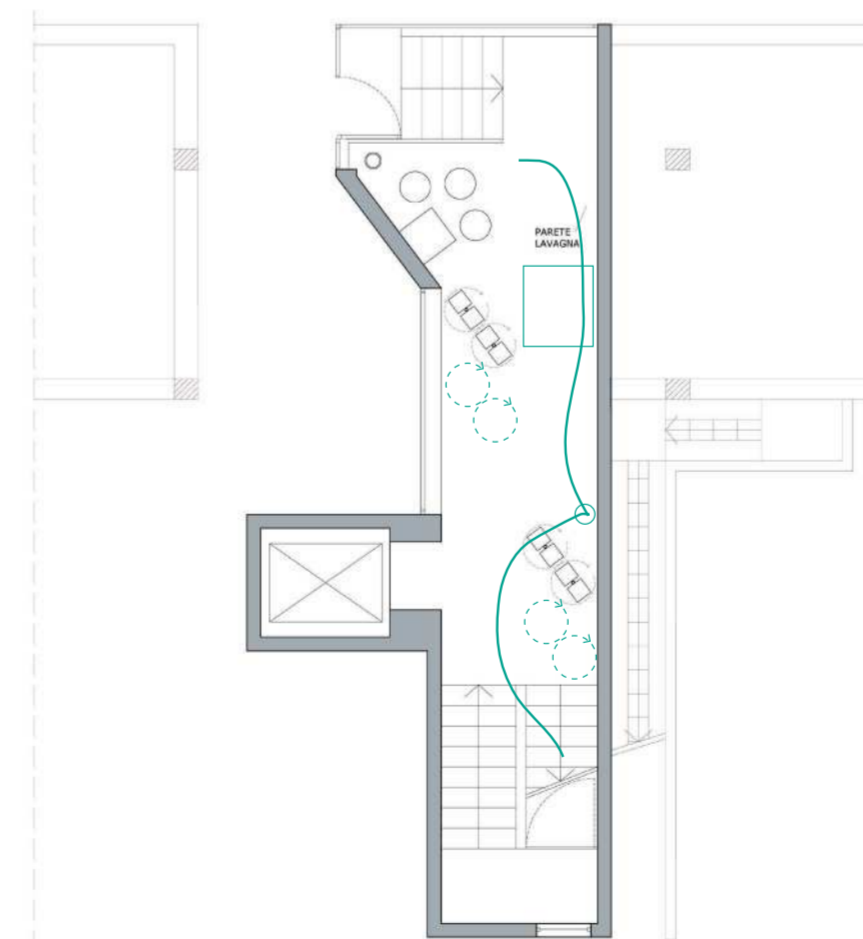


View on the kitchen



View on the living room

HALL



In order to **share passions** and hobbies like books, movies, music and more, we placed some mailboxes in the ground zero doorway. It can be used only by residents of the building using a passpartout. These mailboxes are placed in order to force people to pass in front of a big wall where residents can **leave and read messages**.



View on the doorway



View of the mailboxes

2nd/3rd floor houses

Houses are completely reversible, without any forced taste and predestined spaces. We put together 3 layers.



1

The house is only seen as a "white box". It's a container, without personality.

WHITE BOX



2

Rooms are not physically defined, but only suggested through a modular system. User can decide all the module's details based on its personality and needs.

MODULAR FURNITURE



3

All the steady details (baseboard, jamb) are defined by one color. We have chosen this solution in order to make a connection with the entire building.

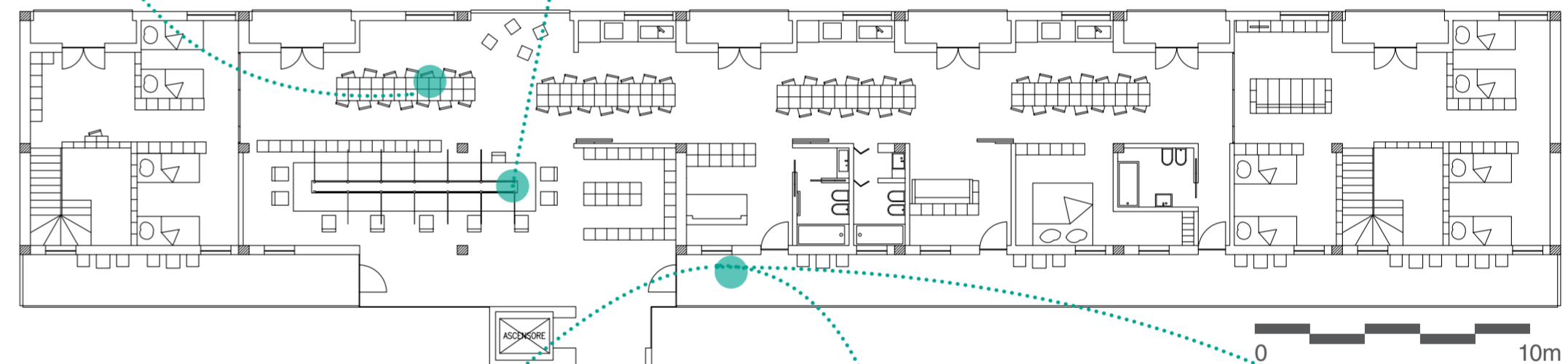
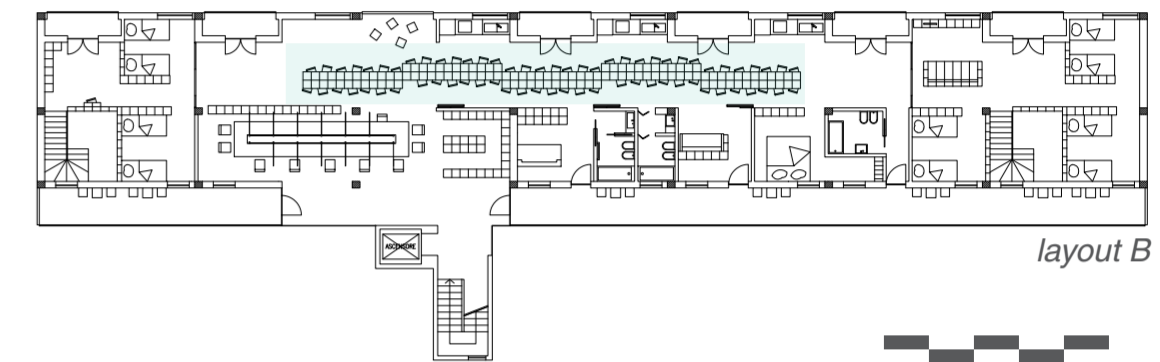
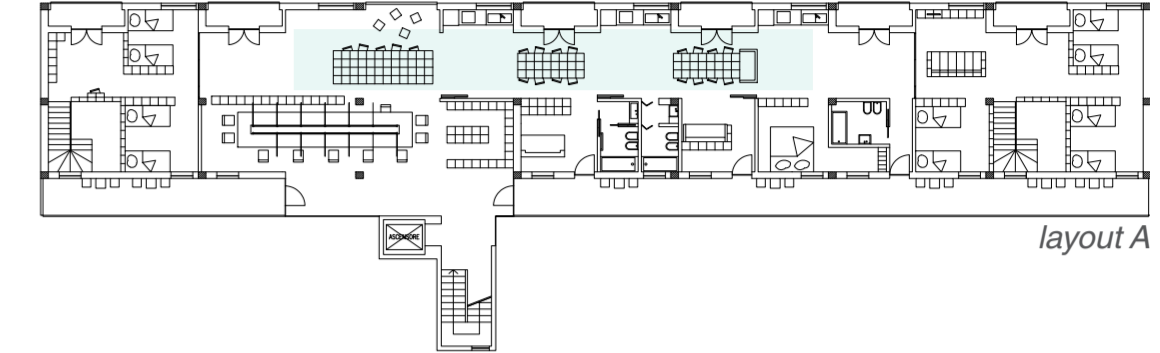
COLOR CONNECTION

Studiarea and ledge

In the Studiarea users can decide to study all together or in group. There is the stockage for modular furniture's covers.



Through sliding walls, users can connect kitchens where they can make condominium meetings and dinners. Tables can have different layouts through the modules.



The outside ledge has 3 elements.

1

Hanging herbs
Users can use it to cook.



2

Blackboard doors
Users can write and read messages.



3

Thermo sensitive bench
Users can see when someone just have passed there.

