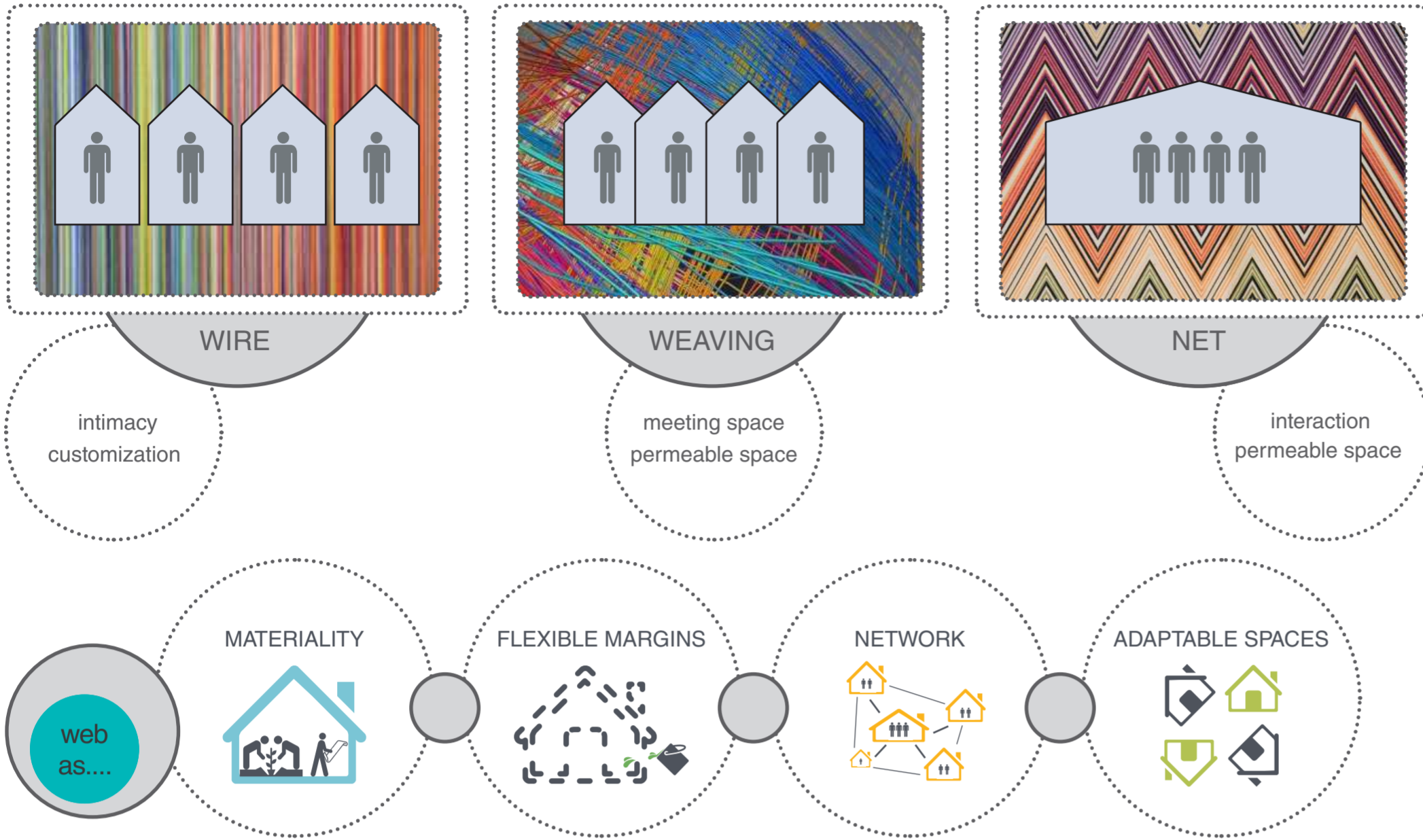


Net

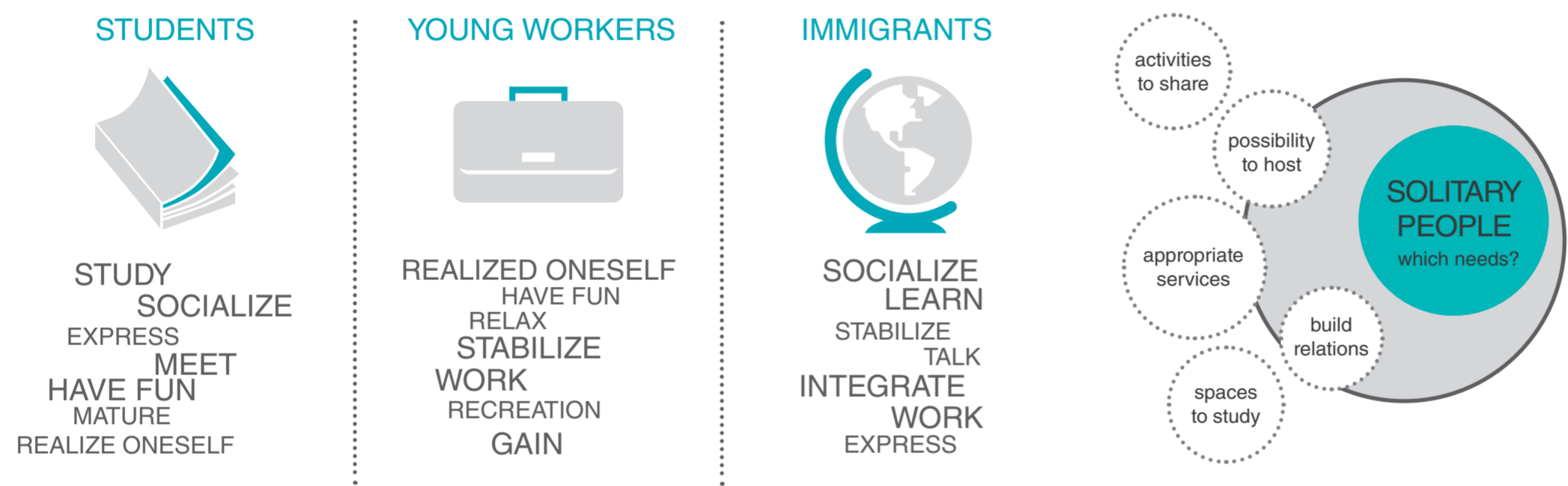
METAPHOR PROJECT



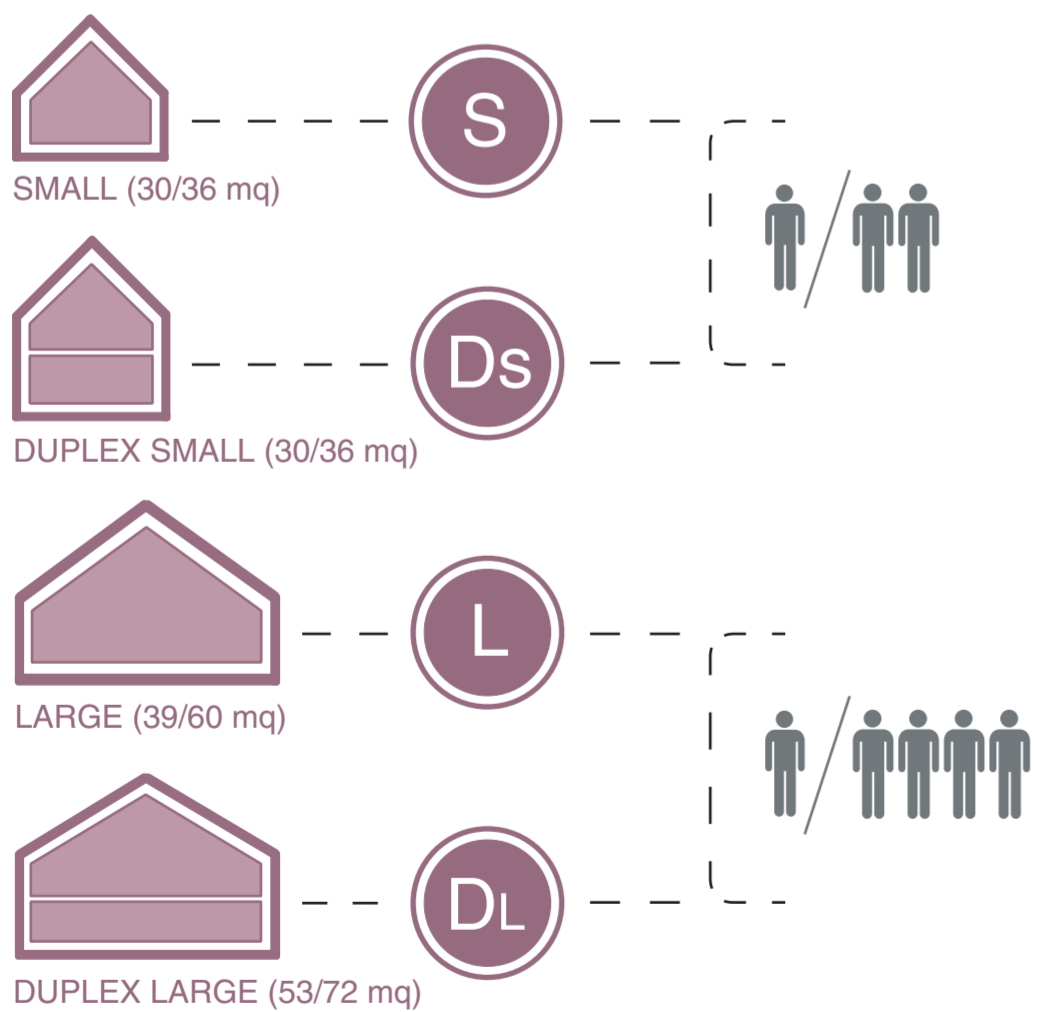
CASE STUDY



USERS / WHICH NEEDS?

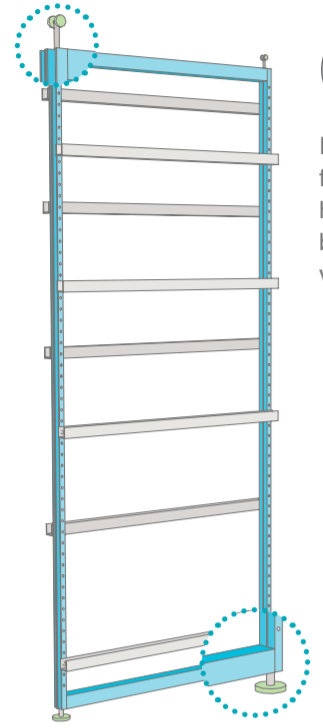


MASTERPLAN / HOUSING TYPE

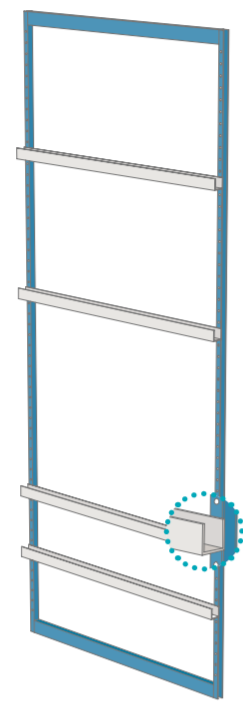


Apartments

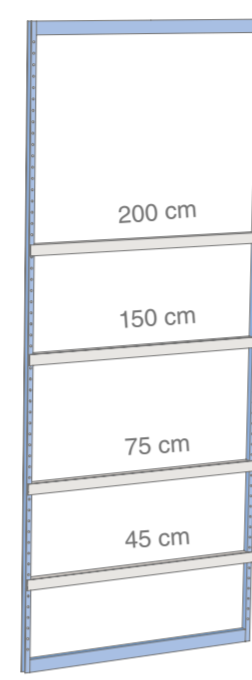
SYSTEMS OF SPACE CONFIGURATION



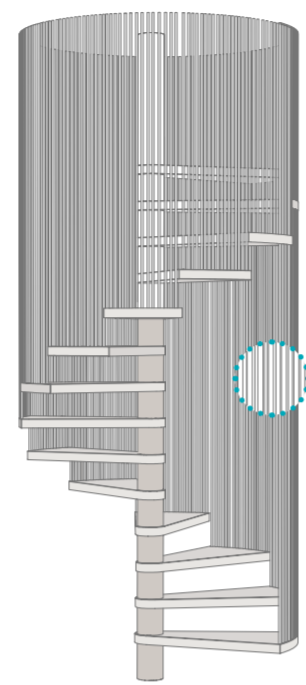
A-Type 1
It consists of an external frame and a series of horizontal rails fixed on both sides and sliding vertically



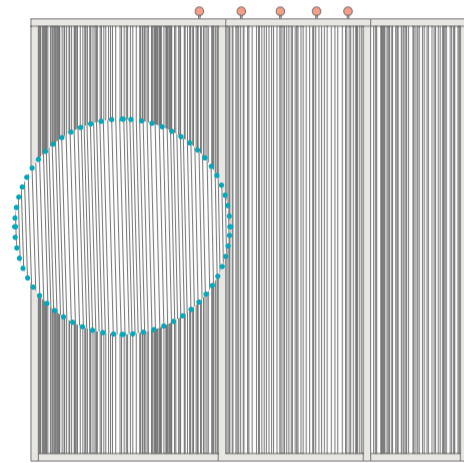
B-Type 2
such type cannot move freely in the space but its horizontal elements can move vertically



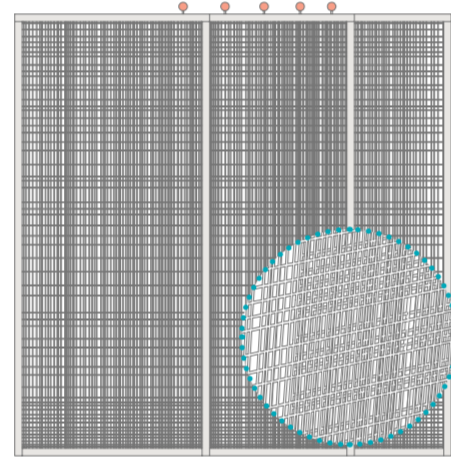
C-Type 3
such type provides less freedom of movement.



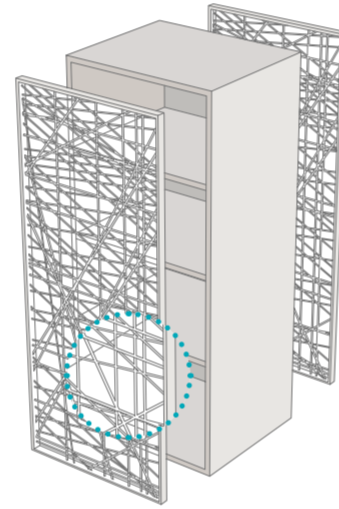
Stairs 4
(thread space) the stair case is protected by nylon threads covered with cotton and the steps are in perforated steel



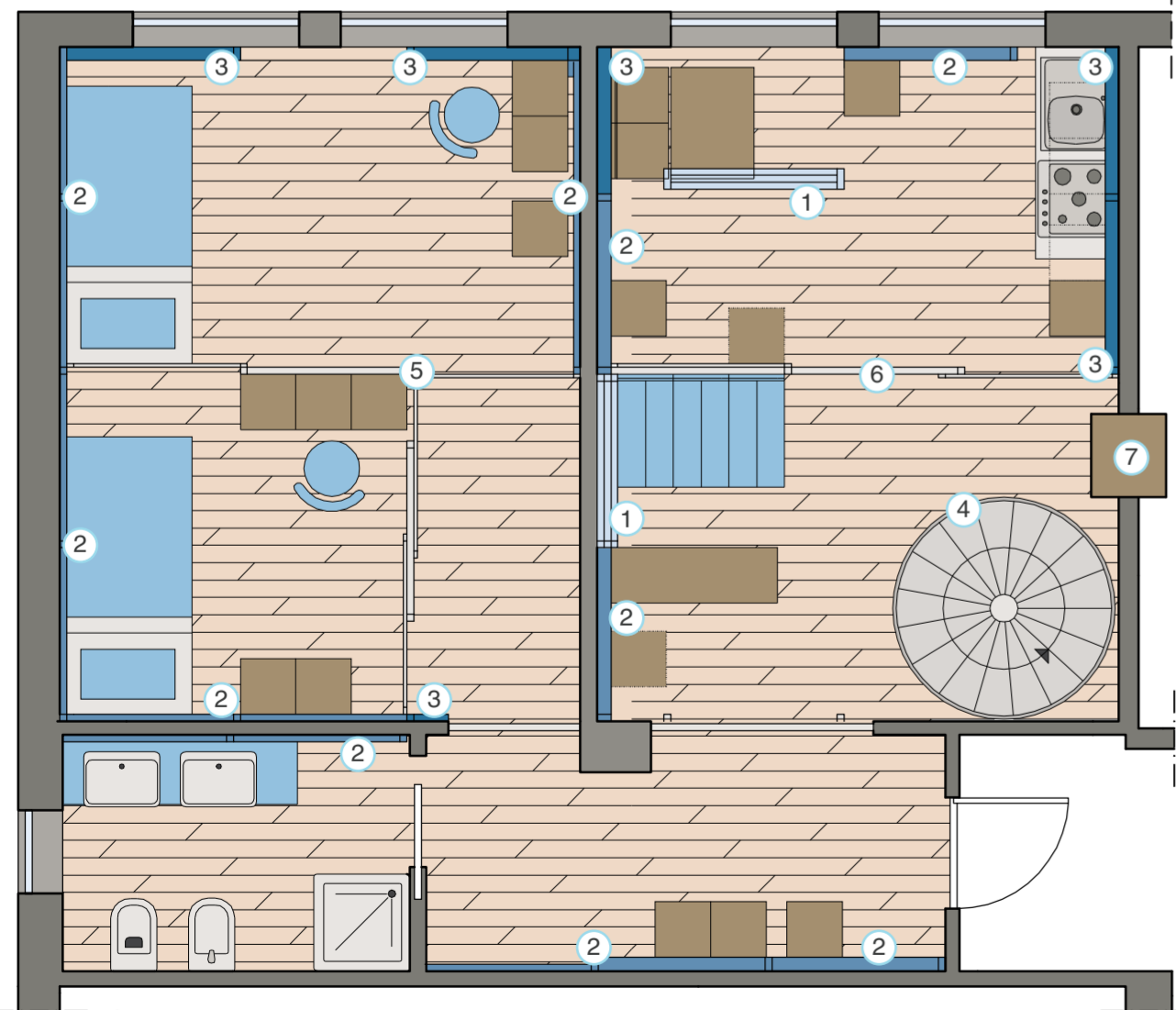
Thread wall 5
(Thread space) the wall consists of two frames which slide along the central frame holding the system of wheel sliding



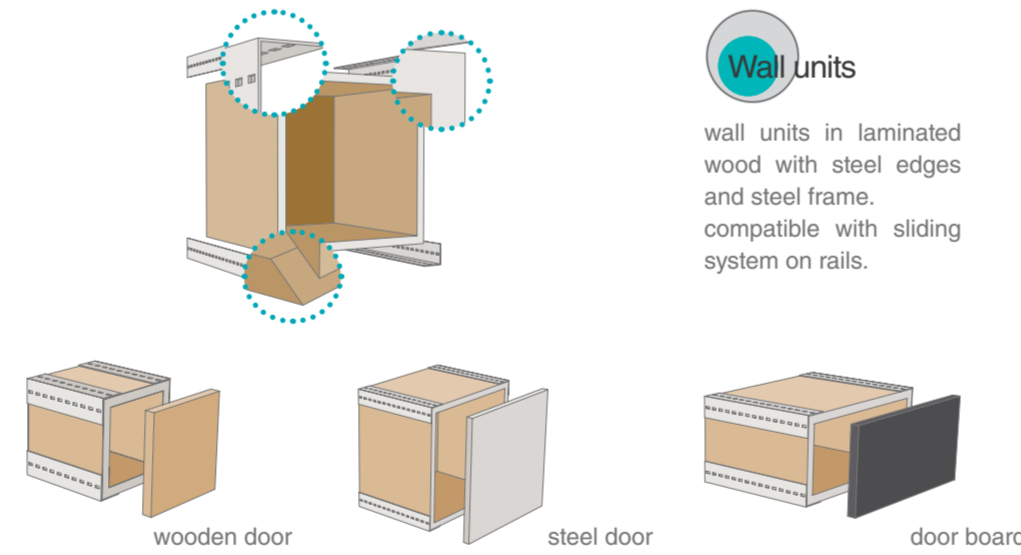
Interlacing wall 6
(interlacing wall) the wall consists of two frames which slide along the central frame holding the system of wheel sliding



Locker window 7
(net space) is a communicating window between two apartments. It serves as a shared locker



plan 1:50

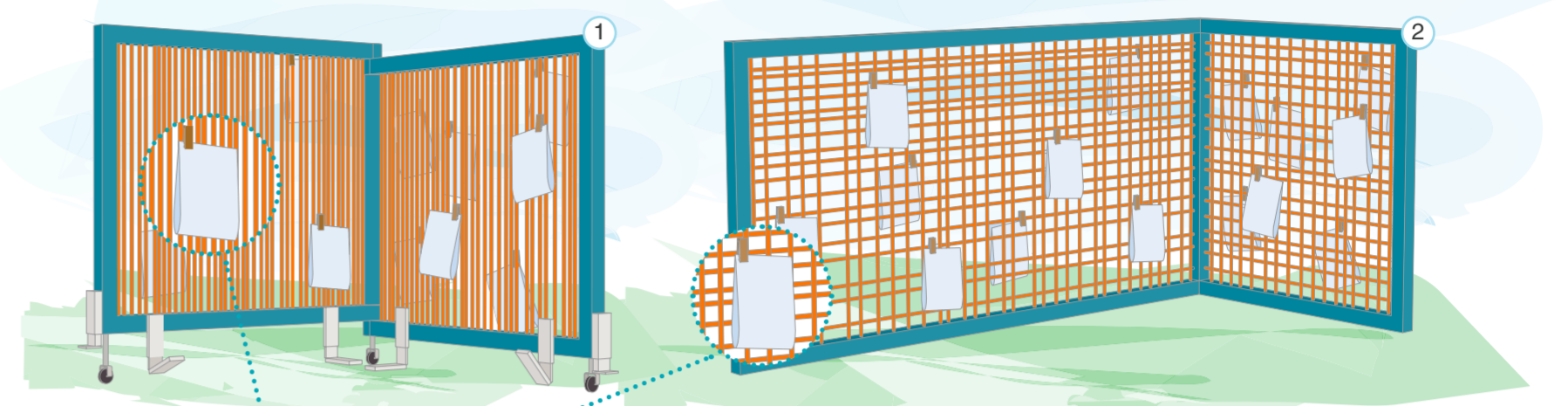


Wall units
wall units in laminated wood with steel edges and steel frame. compatible with sliding system on rails.



Zen Zone

GARDEN ON THE ROOF



Wall for the modulation of space 1
they are fixed elements which create space dedicated to reading and make shadow

1

Movable element 2
it can be moved within the Zen Zone in order to create various areas and to make shadow

2

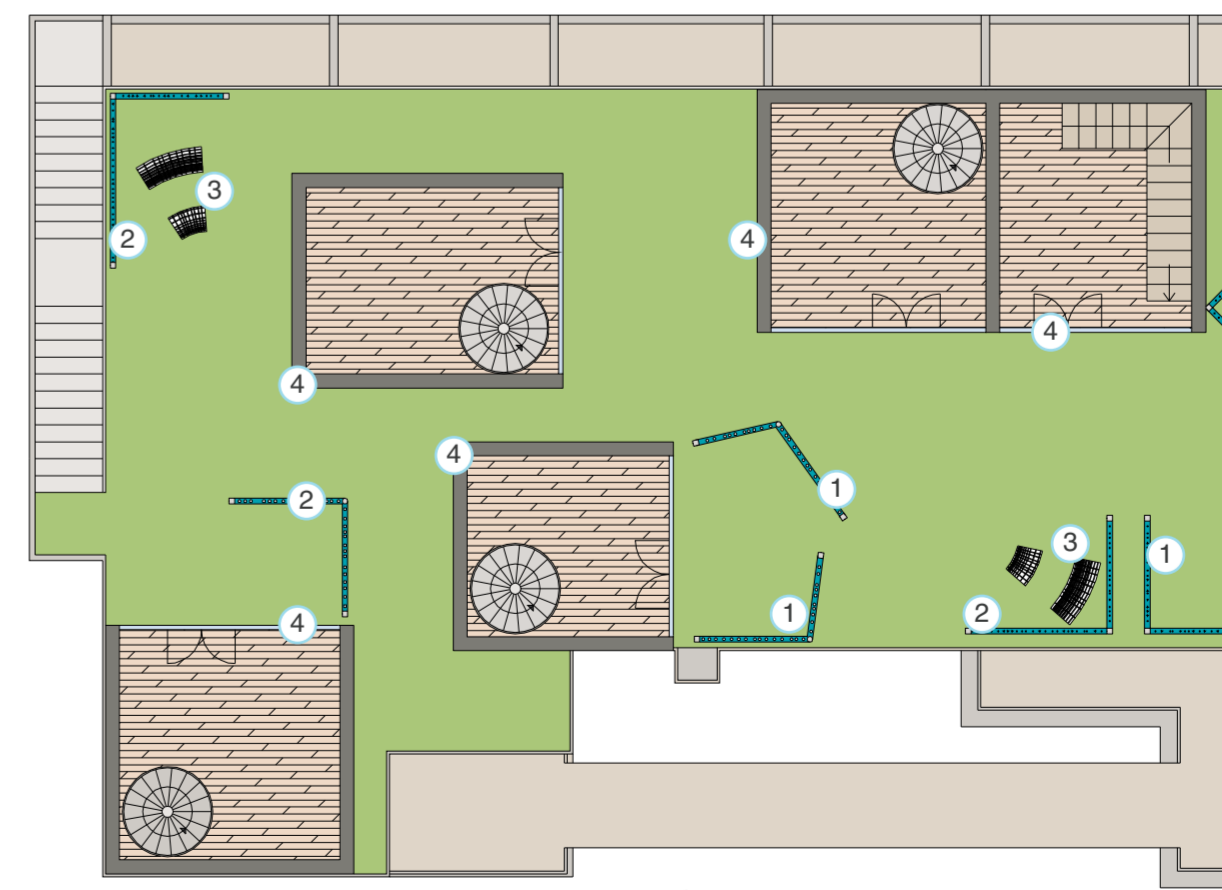
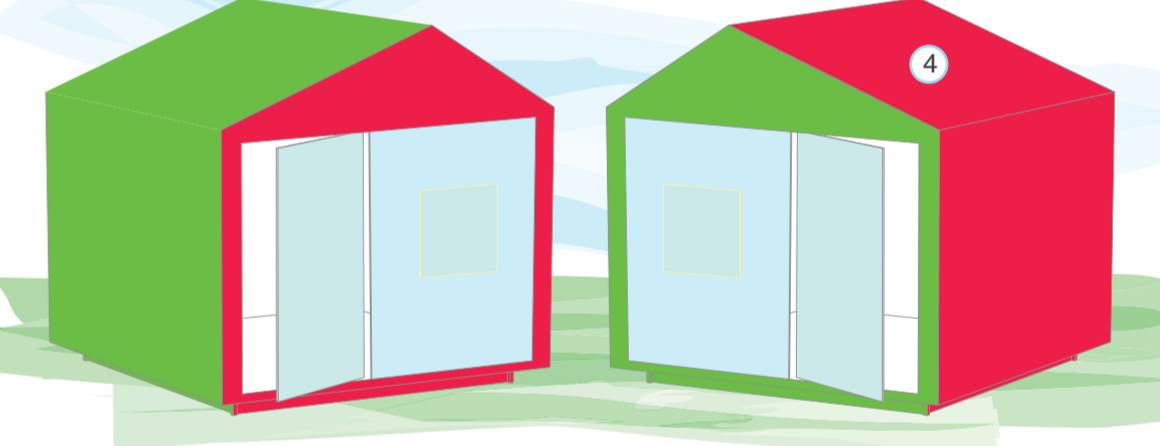
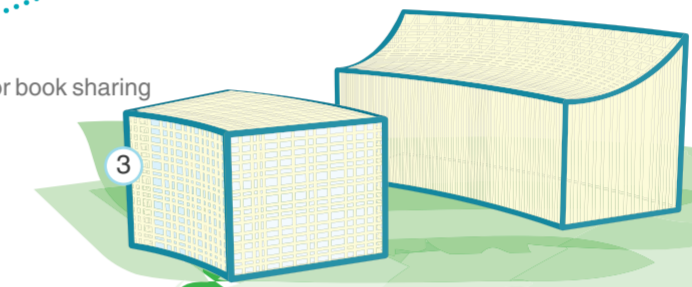
extension on the roof 4
the structure is an extension that allows the apartment to get an extra room and a direct connection with the roof

4

housings for book sharing

Outdoor seat 3
light outdoor furniture with painted metal frame and nylon threads. Easily movable

3



plan 1:100

WHAT ACTIVITIES?

- areas for talking
- areas for reading
- areas for relaxing

Apartments

THREAD SPACE: BEDROOM

separation: the wall made of colored textile stripes containing wooden sliding panels - closed or half-open zone

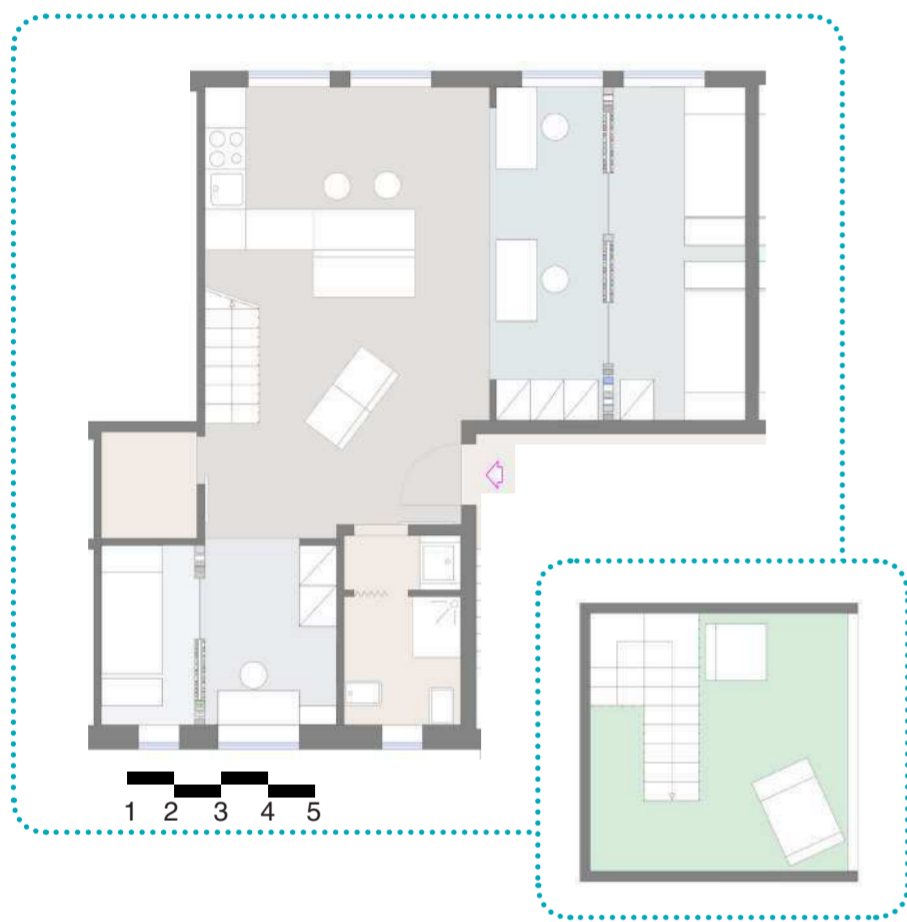
THREAD SPACE: STUDY AREA

separation: one-color non-transparent curtain of soundabsorbing textiles - closed or open zone

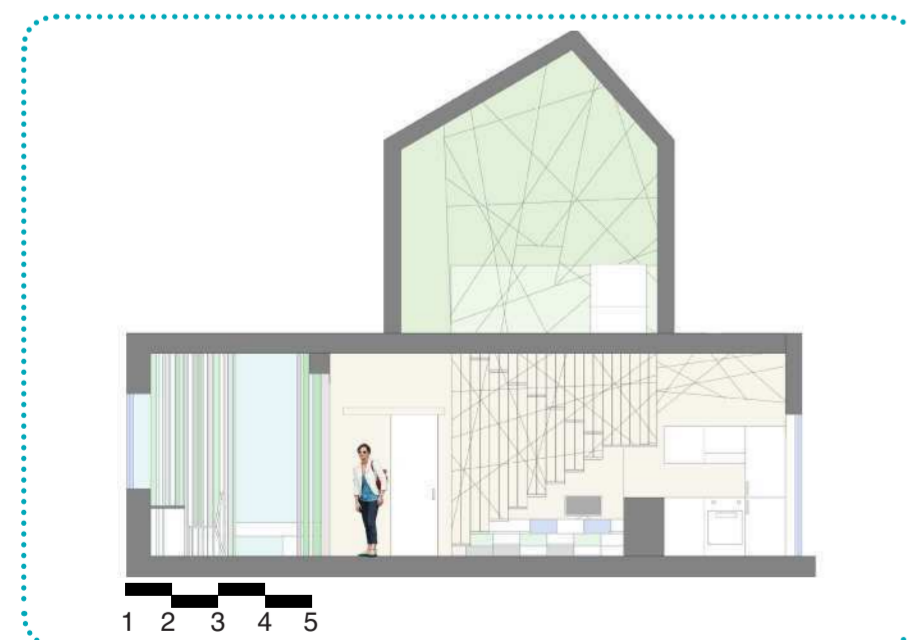
INTERLACING SPACE: LIVING ROOM

separation: stairs protected by steel threads which create an abstract drawing - zone open to everybody

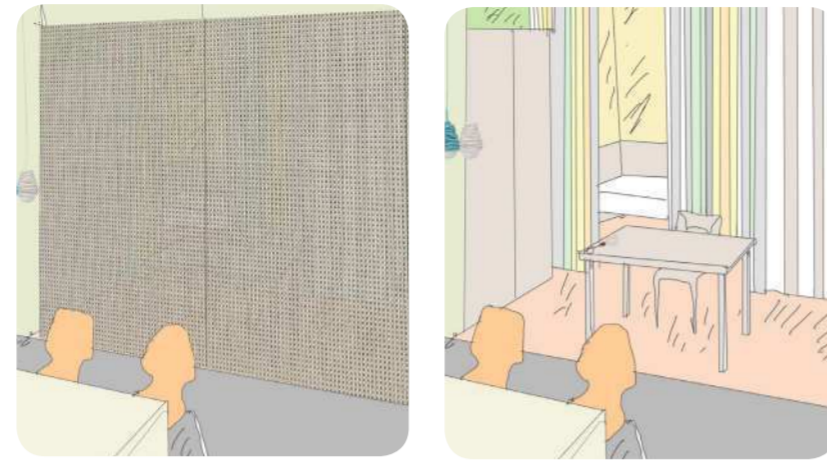
Concept



Plan



Section



Textile walls



Open space



Relax area



Case studies

Watch Your Step



Case studies

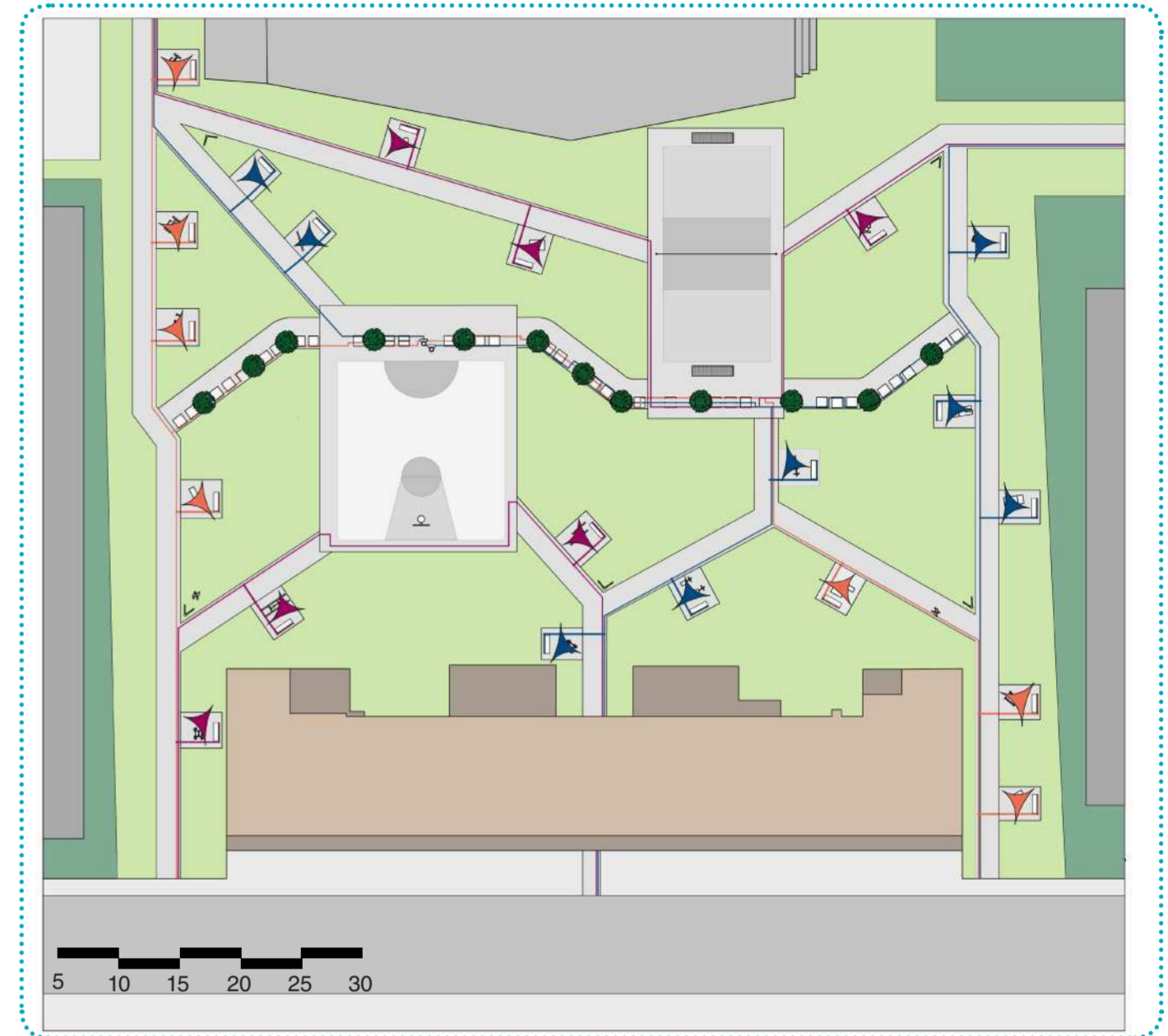
THREAD



Concept



Sketches and renders



Plan

INTERLACING

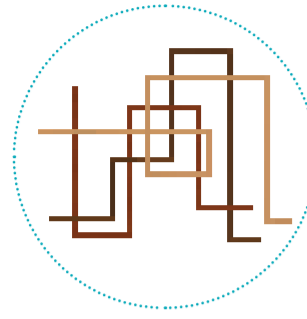


NET

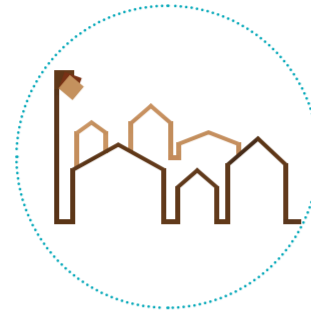


Apartments

DECORATION THEME



Abstract



Figurative



Comics

CONCEPT

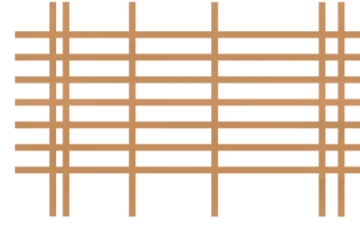
Space and Elements



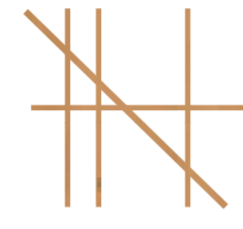
THREAD SPACE
Night zone
bedroom&bathroom



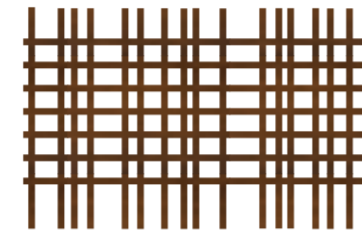
SATIAL FRAME
clean lines
in the space



INTERLACING SPACE
Day zone
kitchen



LINES
entering the space
and interlacing

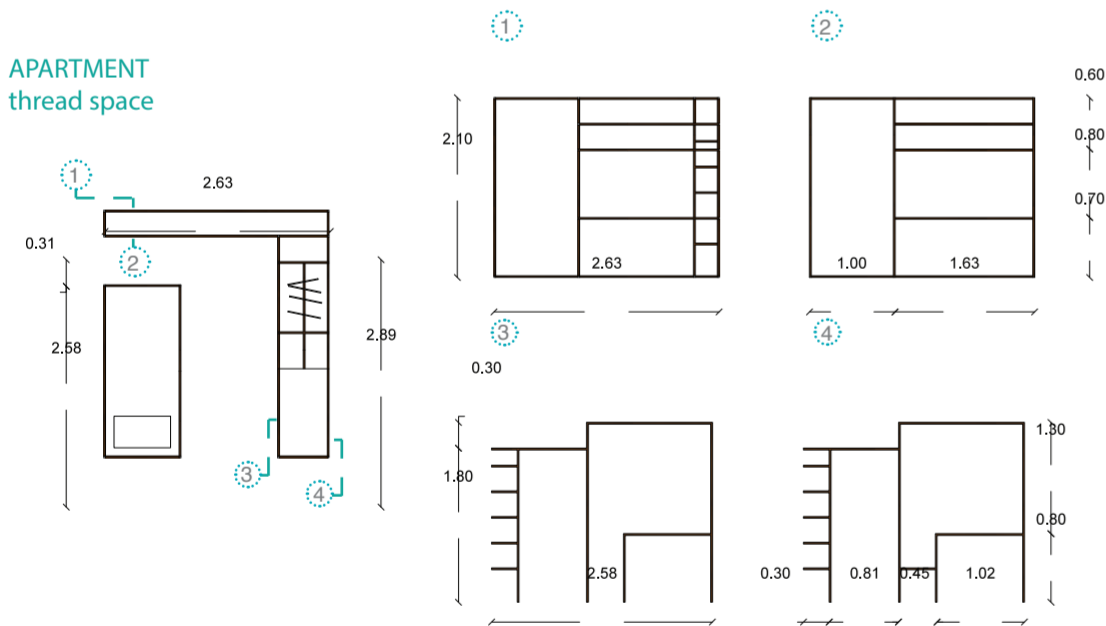


NET SPACE
Day zone
living room

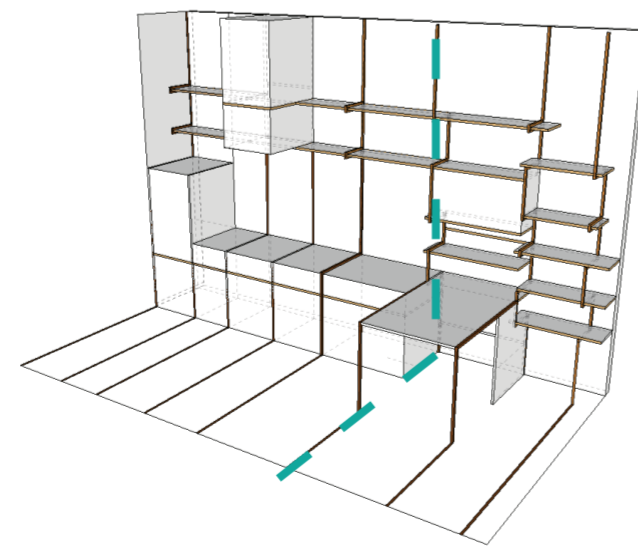
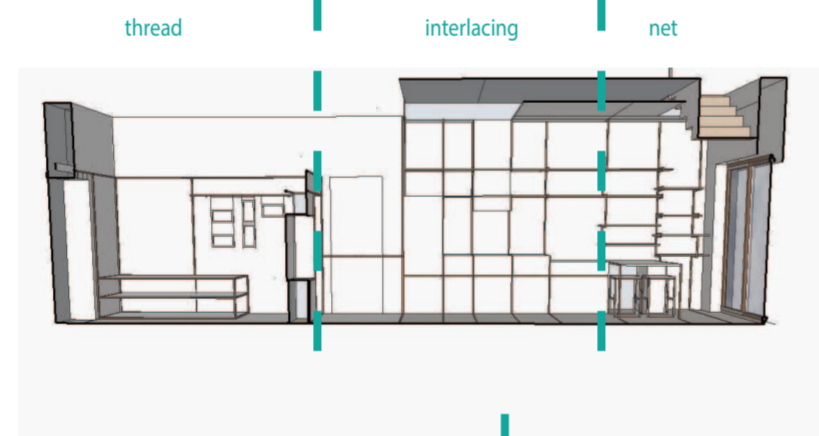
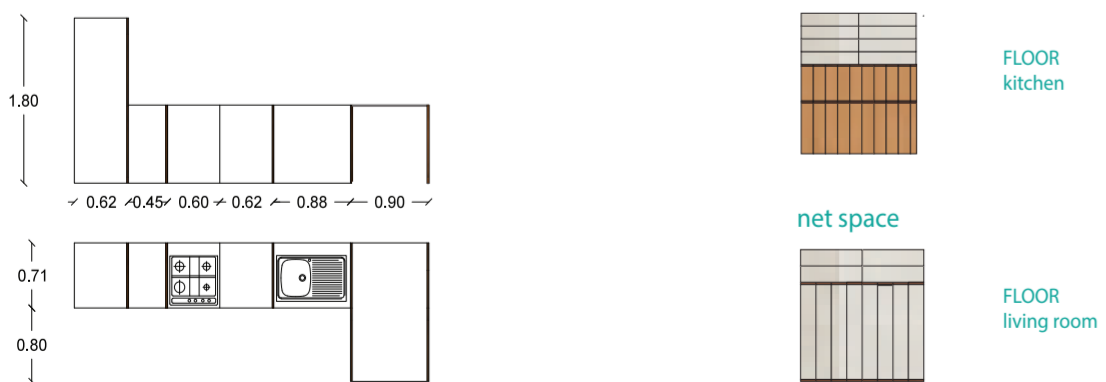


ELEMENTS
which form in the result
of previous
interlacing

APARTMENT thread space



interlacing space



Green Cuisine

DESCRIPTION

The green cuisine is a common space for all dwellers of the block, and is a fusion of two themes: the garden and the table. The space frame provides the necessary support for growth of vegetables, vines, or simply for planted pots. It is divided into three levels: three platforms at different heights and textures mark the floor at three

different moments of action in the kitchen: choice of ingredients, preparation and tasting of the meal. The users get aware of this path due to wall comics, in which the elements of the story and the characters are represented by lines drawn close to each other, as if it was a sort of narration interlacing.



Decoration theme: Comics



Frame: Garden and Lights



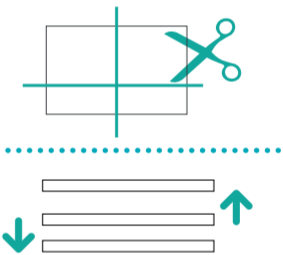
Space of ingredients



Space of cooking



Space of tasting



AA Section 1:50