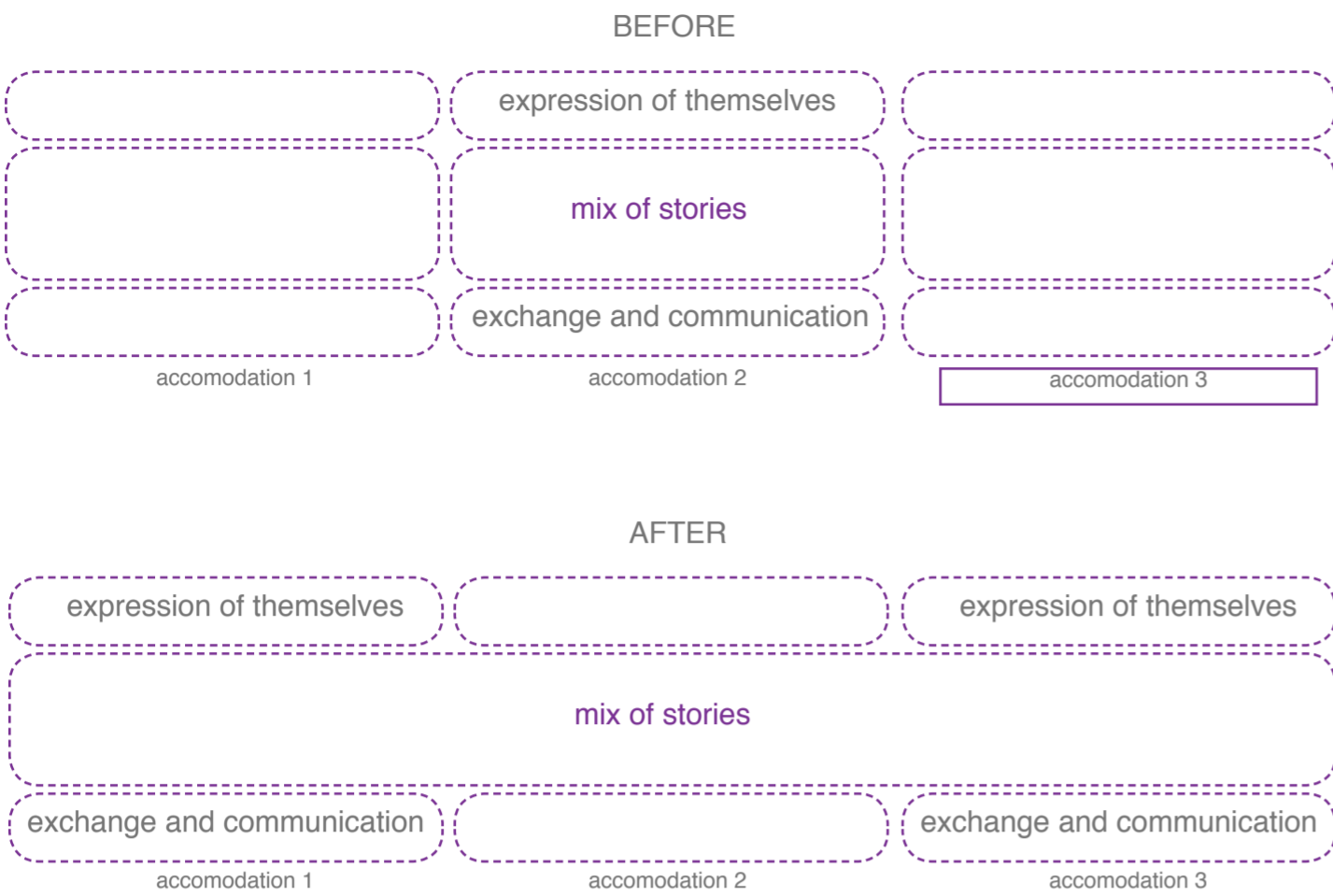
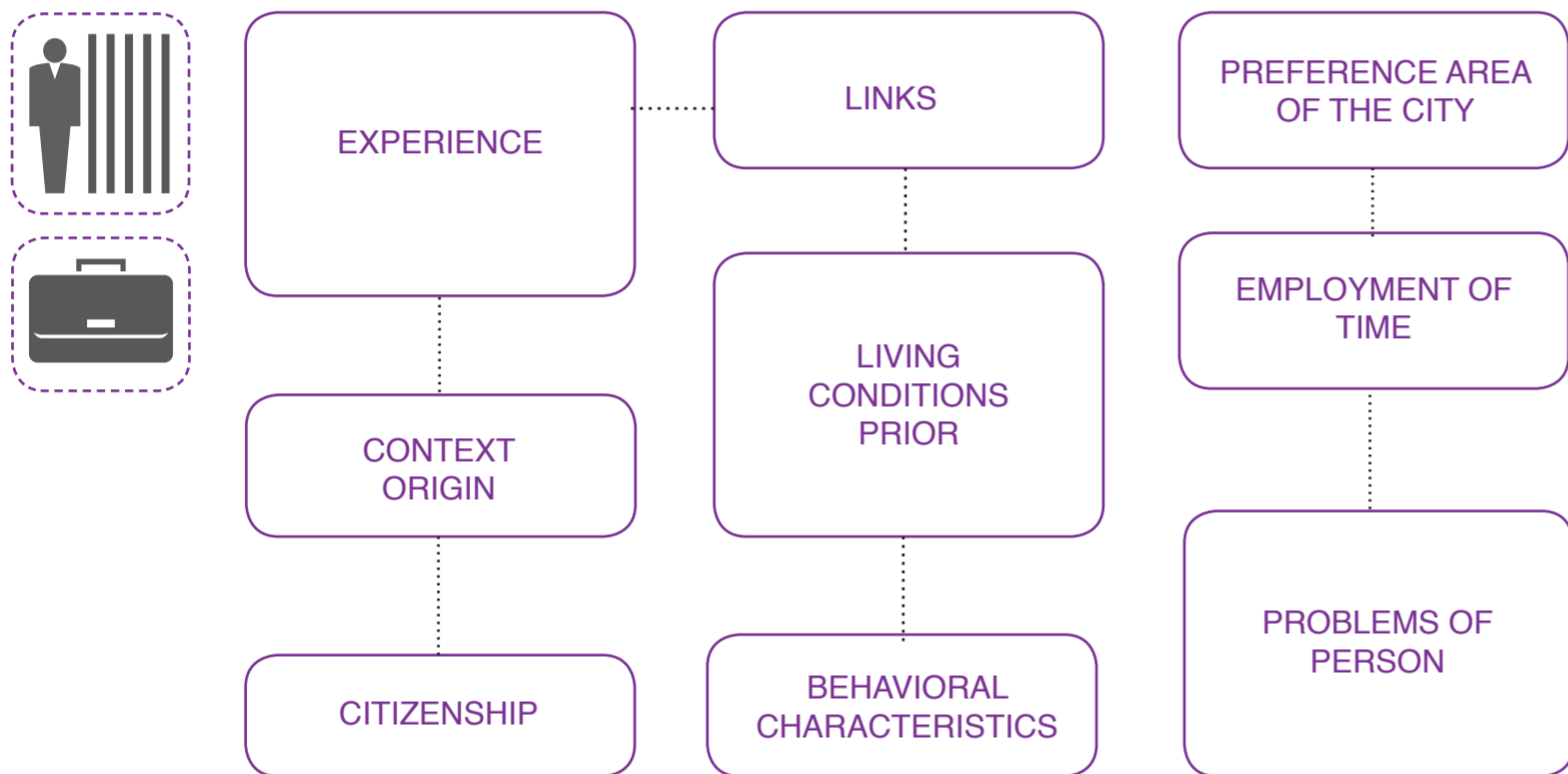


Tale

METAPHOR APPLIED IN SPACE



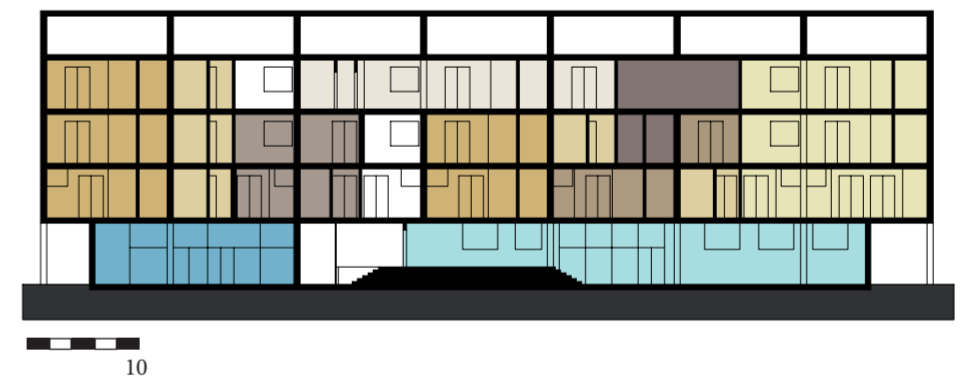
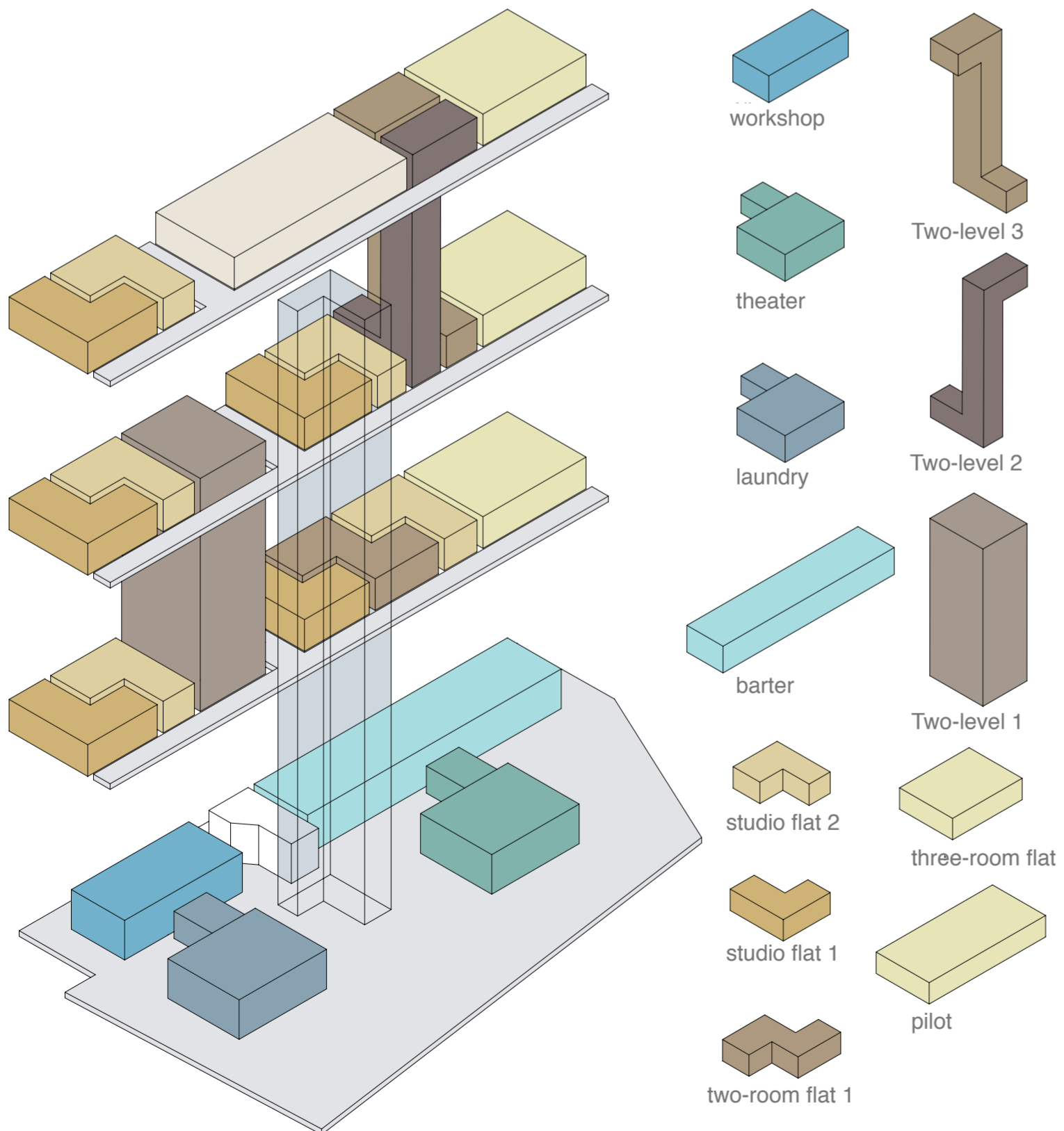
USERS



CASE HISTORY

	Seoul, Corea del Sud 2012 blurred vision decomposition transparency		Kortrijk, Belgio 2012 fiction lightness form as story
	Tokyo 2010 mesh opening border		Parigi, Francia, 2006 false three-dimensional Story of the past Opening inwards
	Fukuoka, Giappone 1989-1991 flexibility reversibility passage of time		Soul, Corea del Sud New York, Stati Uniti personal Space identity adaptation
	Ypenburg, Paesi Bassi 2000-2002 space day / night sharing space external		Londra, Regno Unito 2012 housing facades narrative expression of self
	Londra, Regno Unito 2012 Interior partitions flexibility wall units		Rotterdam 2011 opening boundaries
	Porto 2012 duplex hammock		Tokyo 2012 Flexibility sliding walls wood

MASTERPLAN

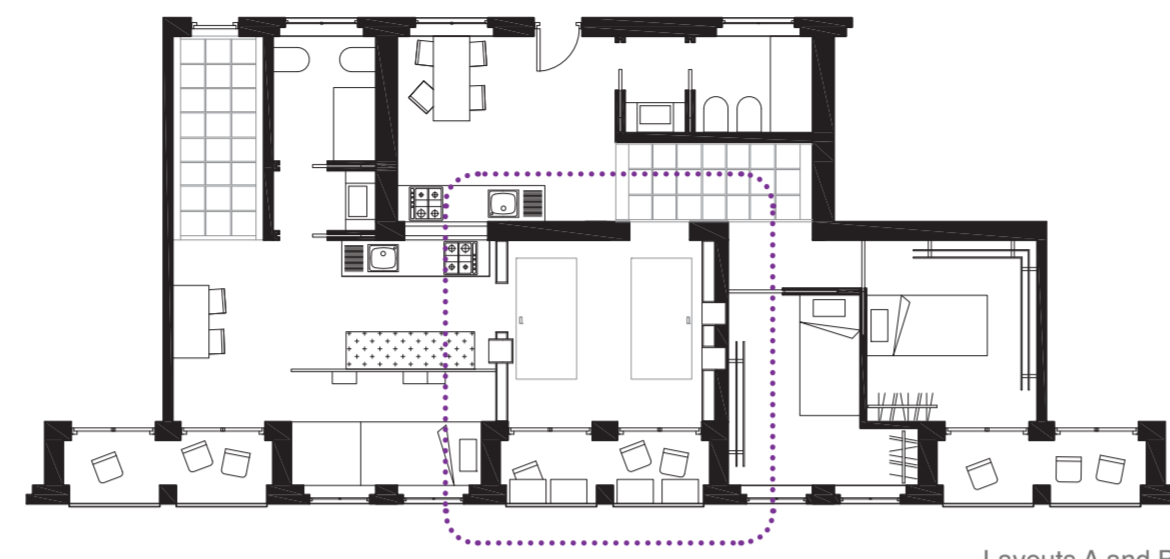
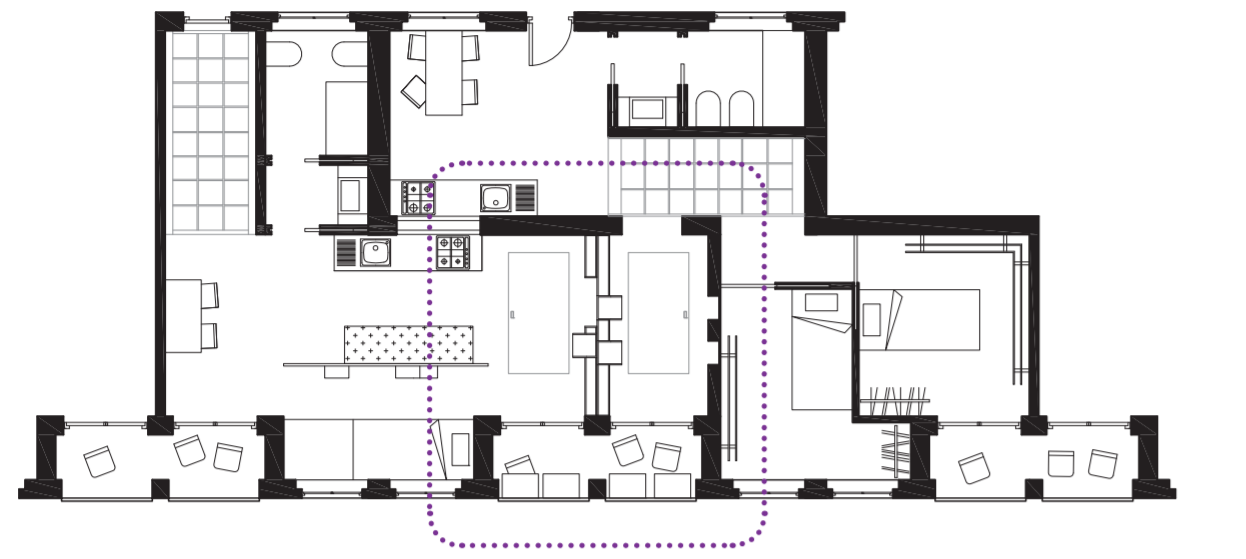


	Studio flat 1 32,19 mq 1 person own balcony		Studio flat 2 32,20 mq 1 person shared balcony		Studio flat 3 35,98 mq 1 person own balcony
	Two-level 1 89,30 mq 3 people shared and own balcony		Two-level 2 45,48 mq 1 person own balcony		Two-level 3 44,63 mq 2 people
	Studio flat 4 34,5 mq 1 person own balcony		Three-room flat 72,45 mq 4 people own balcony		Three-room flat 2 71,45 mq 3 people shared and own balcony
	Two-room flat 42,38 mq 2 people 2 shared balcony		Tape 118,65 mq 5 people shared and 3 own balconies 2 bathrooms		

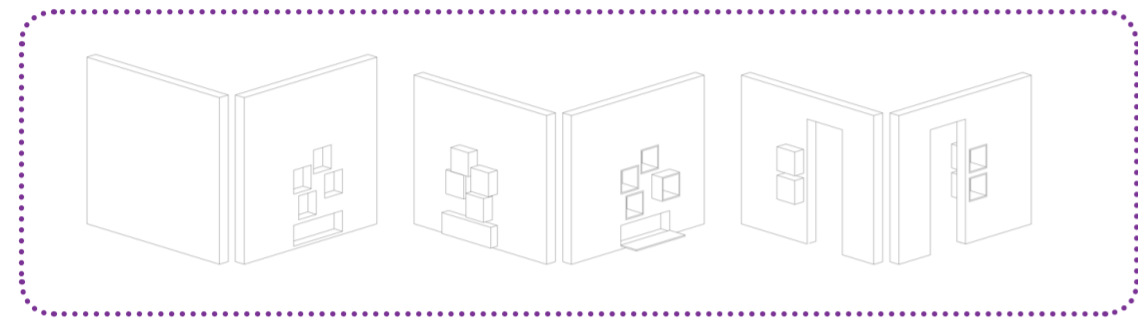
Via Demonte 8

Viola Federico | Lucia Ferrarati | Marco Fogaccia | Aligi Walter Febe | Eleonora Fogato | Sara Gardella | Jia Qinxian | Ge Sicong

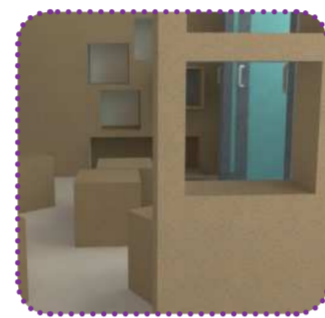
Apartments



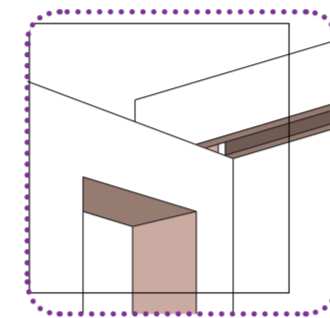
Layouts A and B



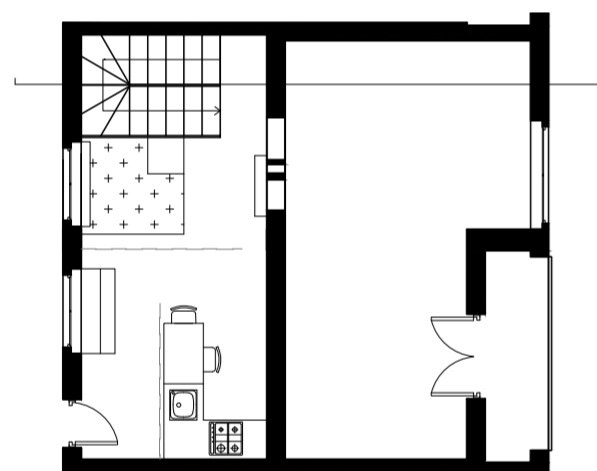
space modulating walls



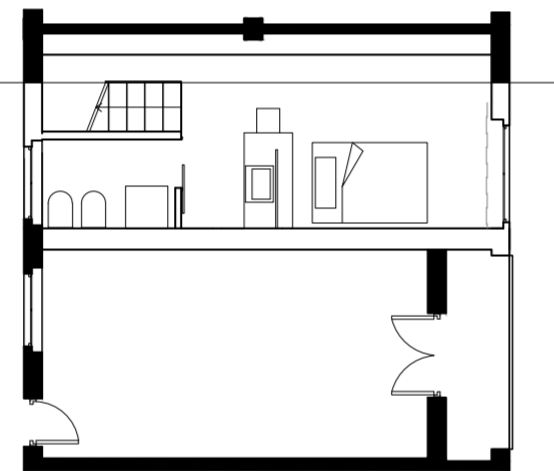
render views



trave detail



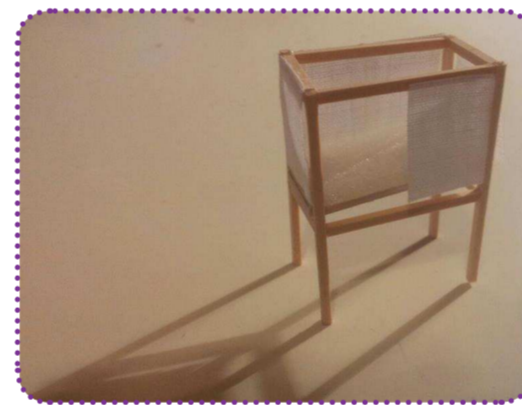
plan of second floor



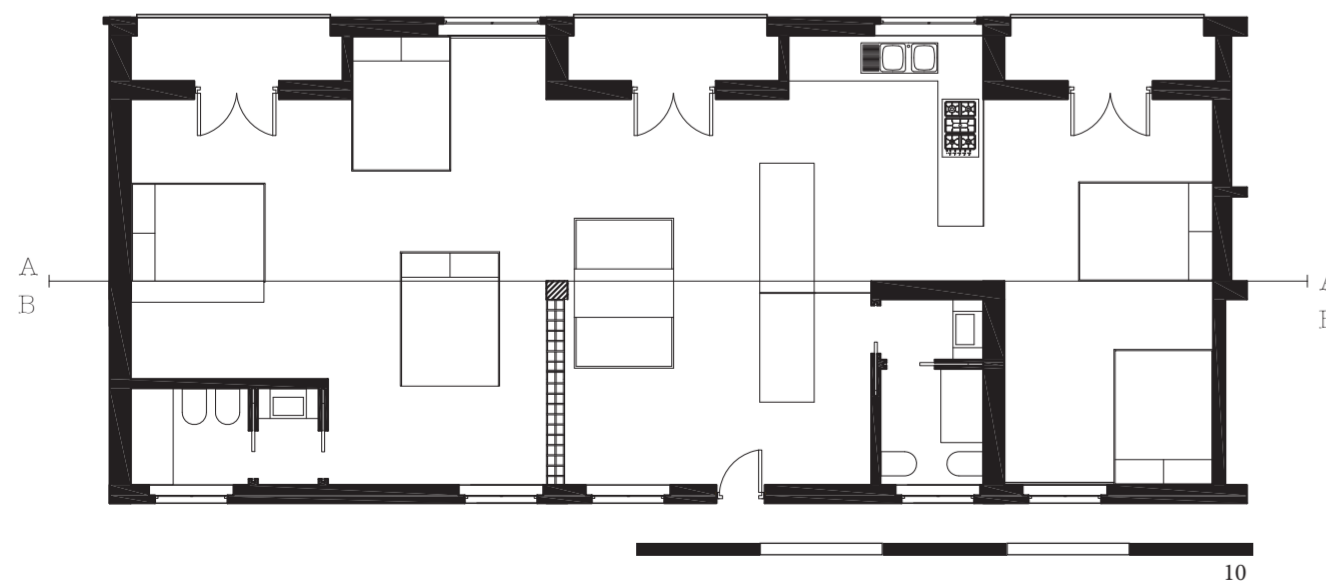
Discovery of the space



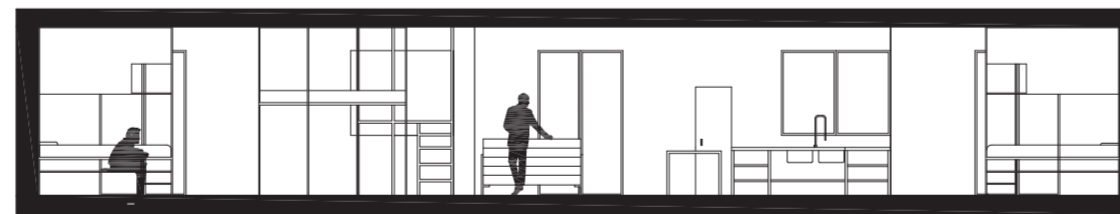
room detail



island bed detail



10



plan and section

10

Space dream

Common areas

Theater of the story



daytime furnishing



entrance



projection



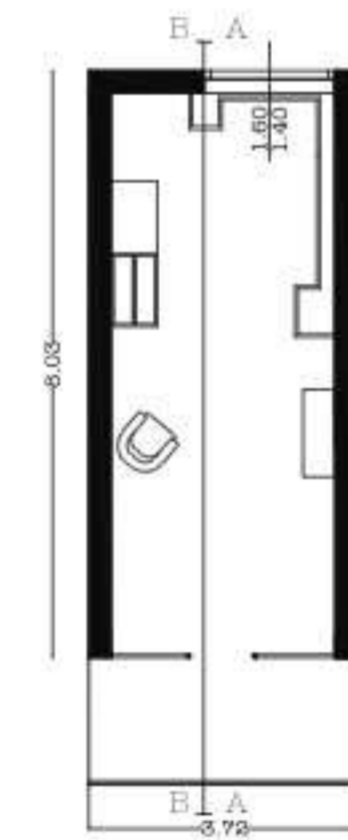
daytime furnishing



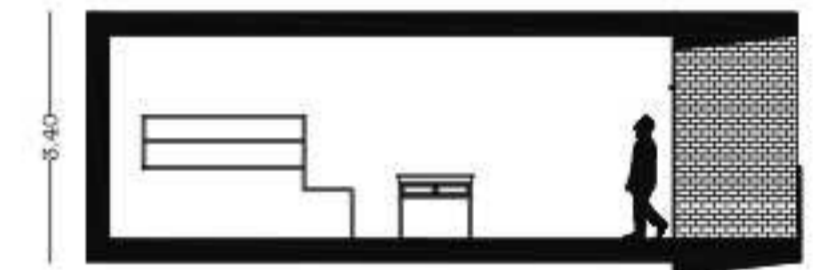
performance furnishing



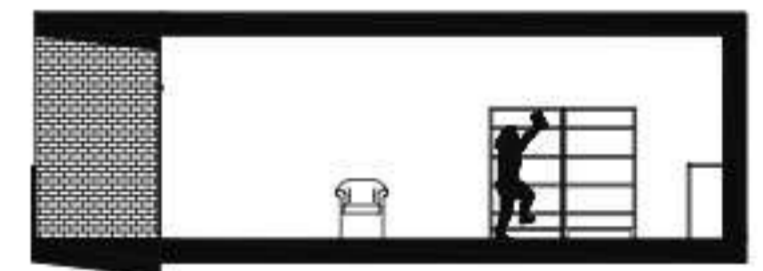
performance furnishing



Widespread library



8.40



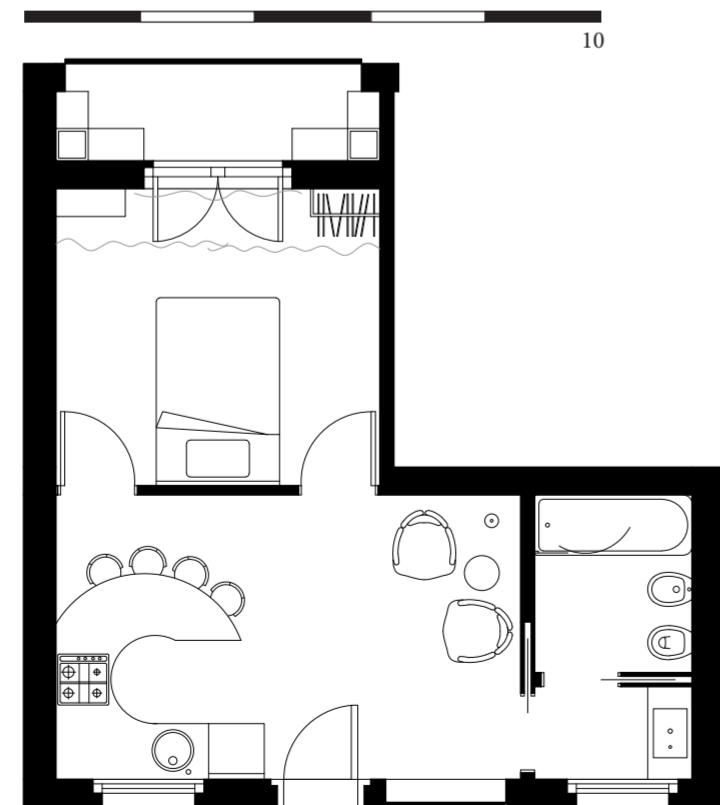
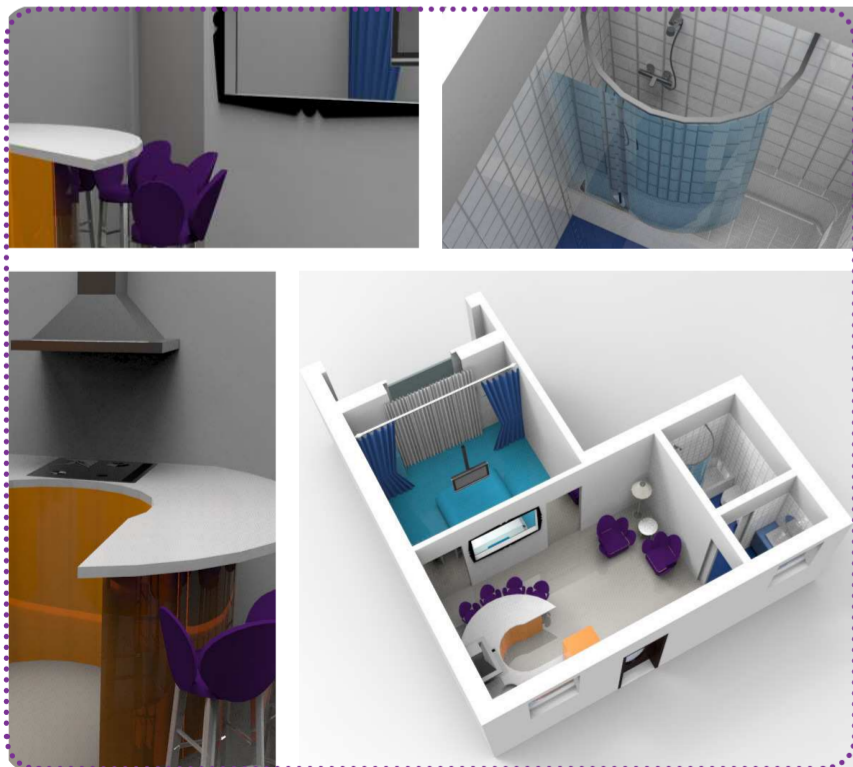
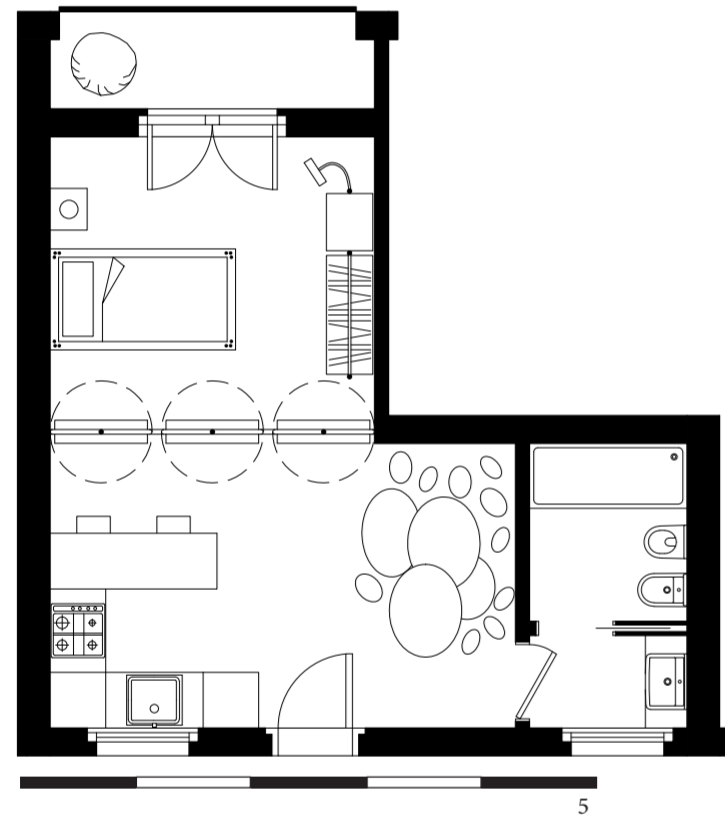
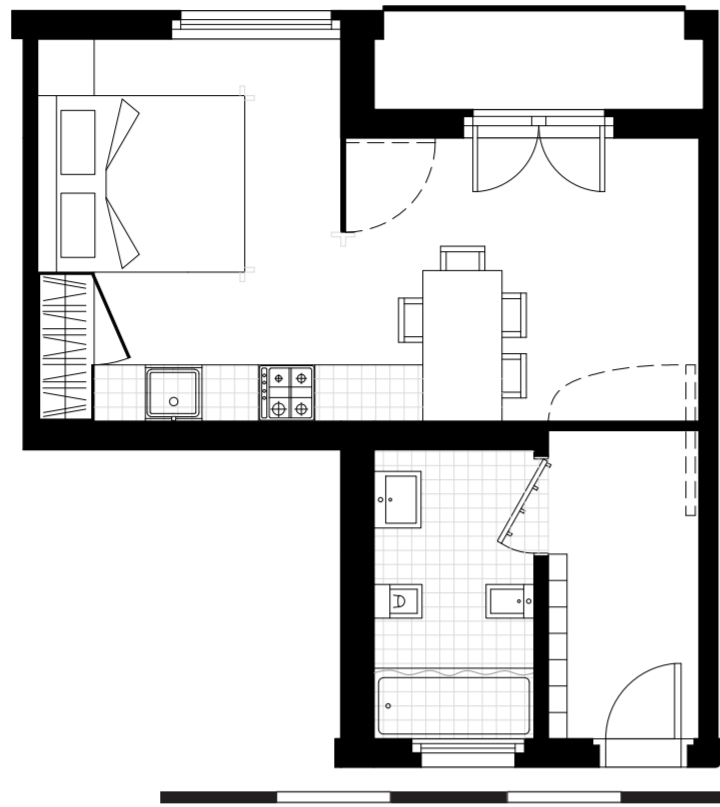
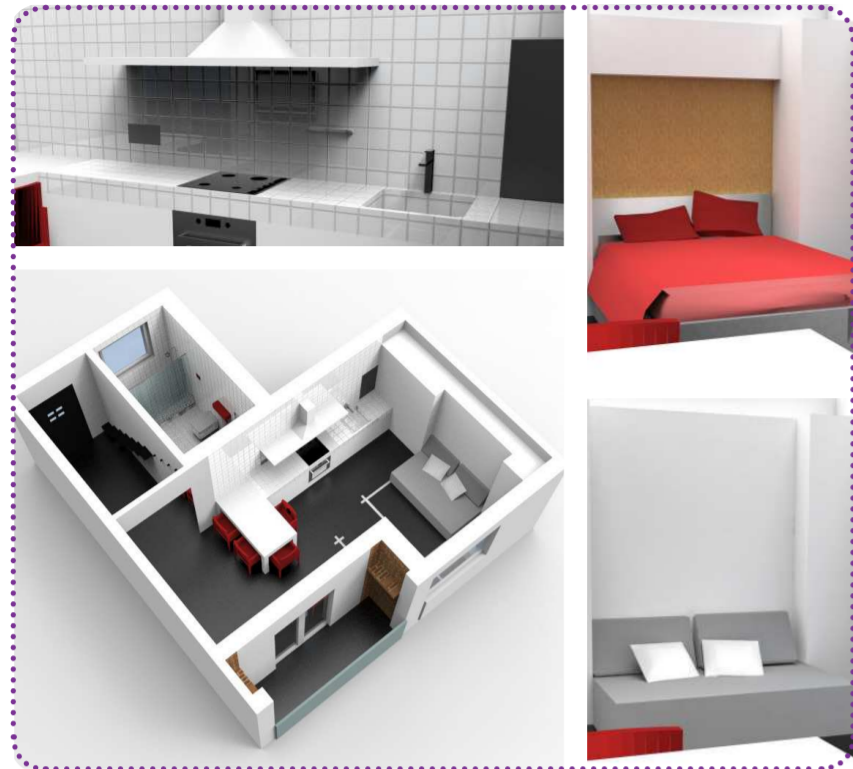
plan and section

10

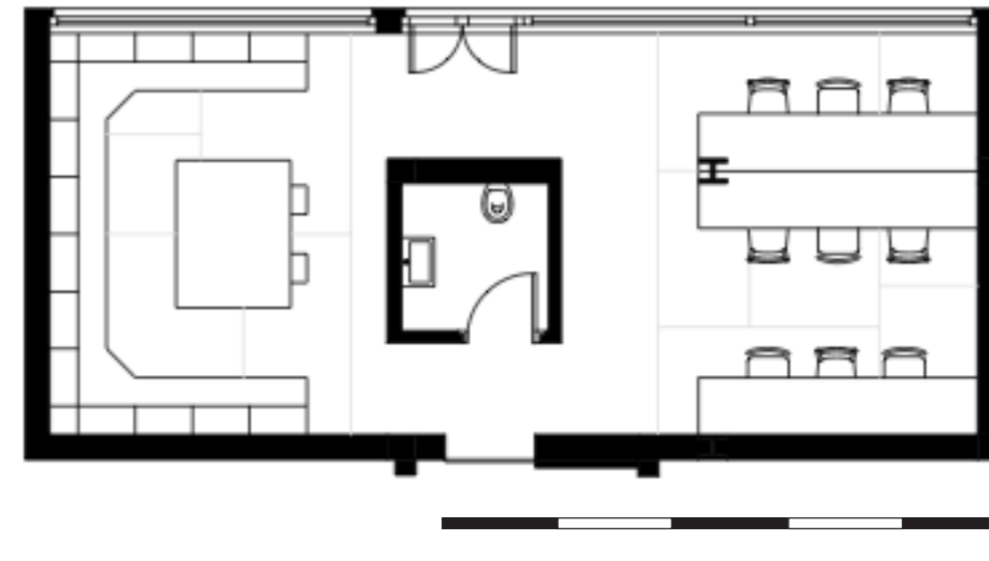


render views

Apartments



"Mystery" apartment



Workshop



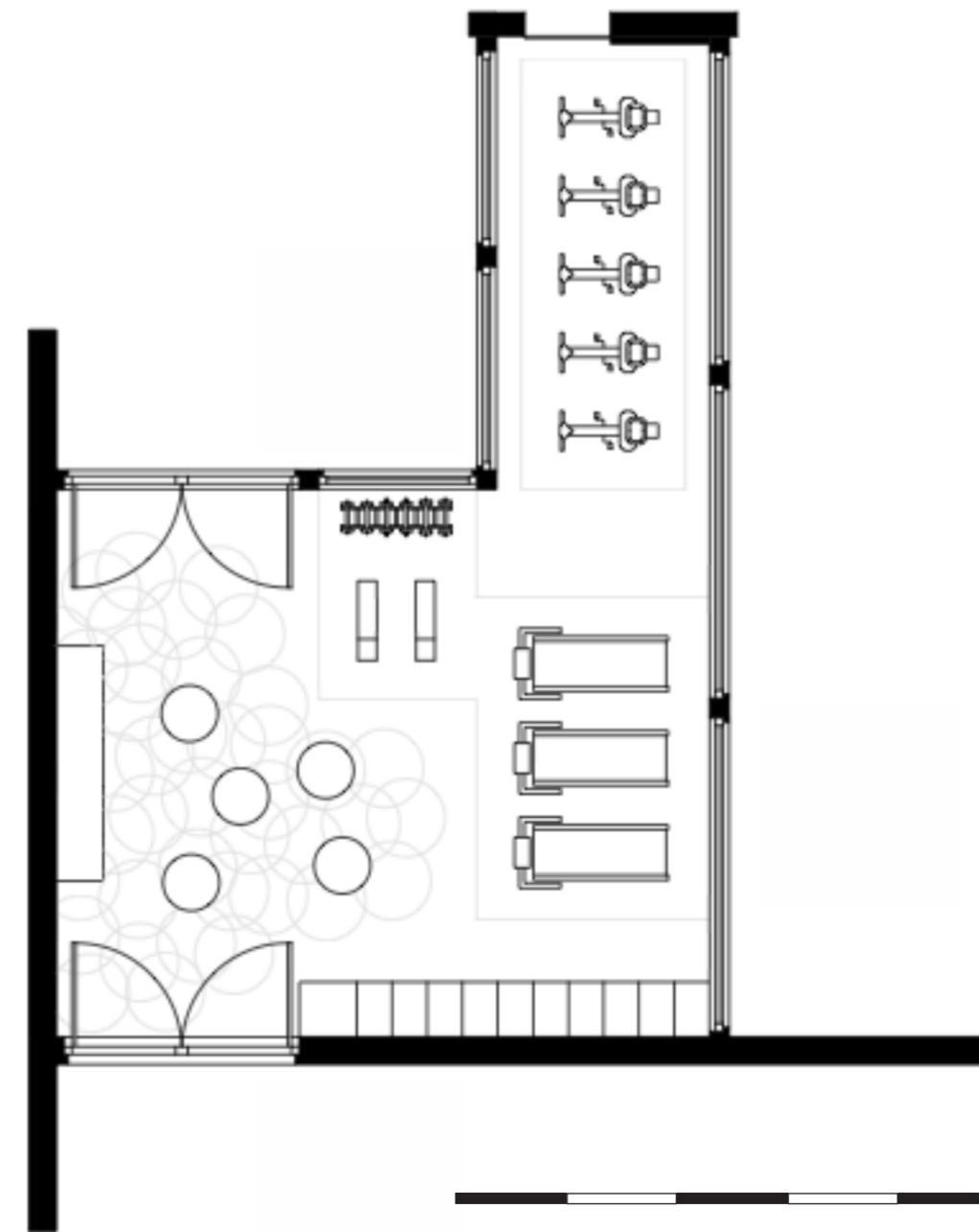
"Adventure" apartment



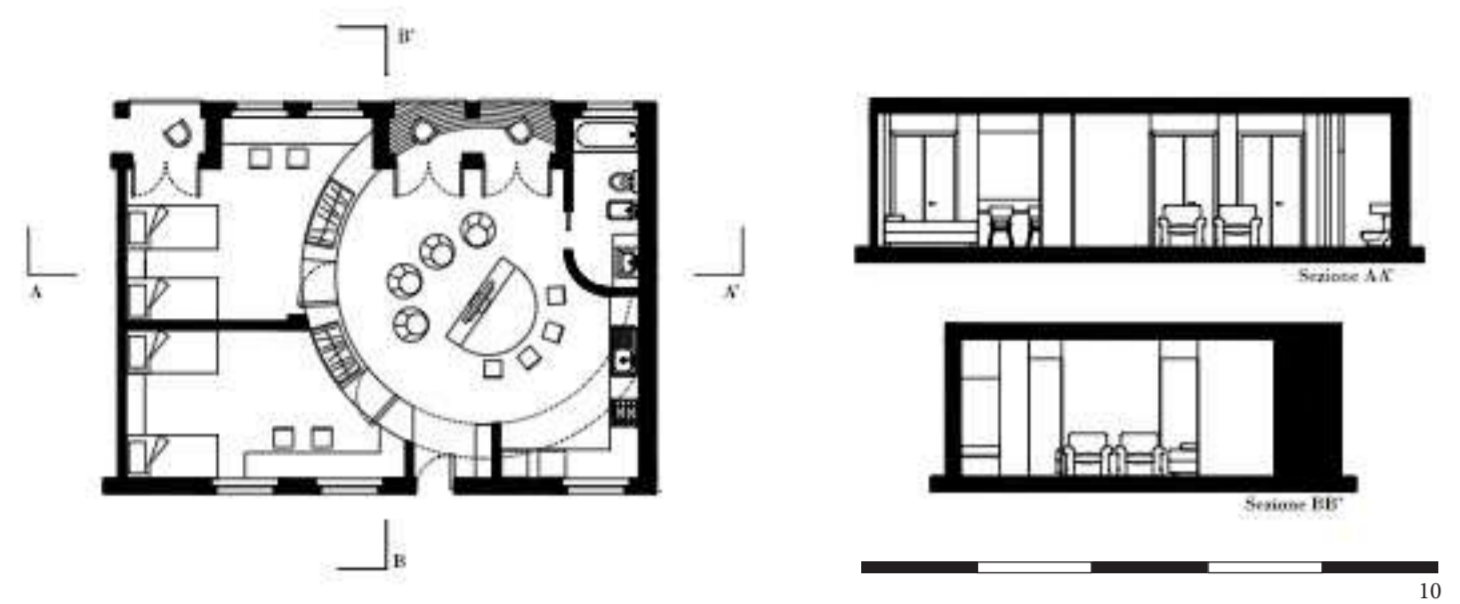
RE- Cycle



Fantastic Place to stay



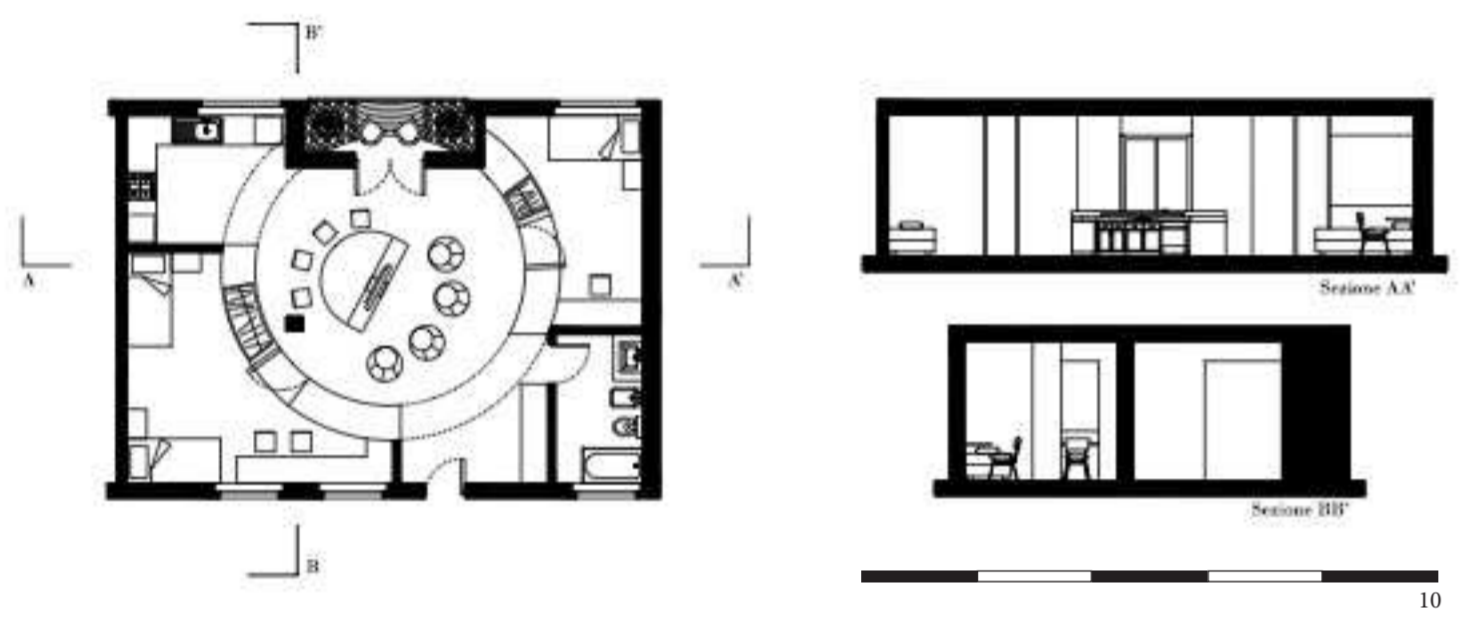
Apartments



Three-room flat 1



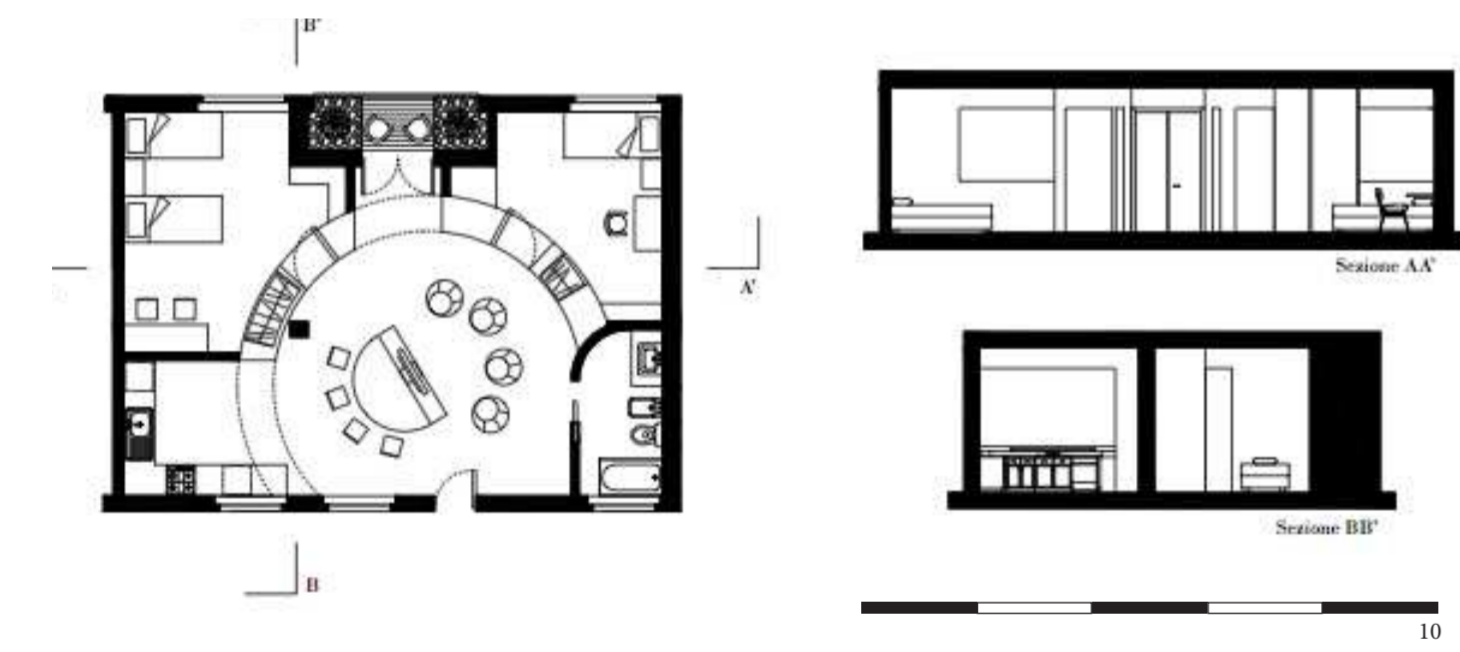
71,45 mq- 4 people- own balcony



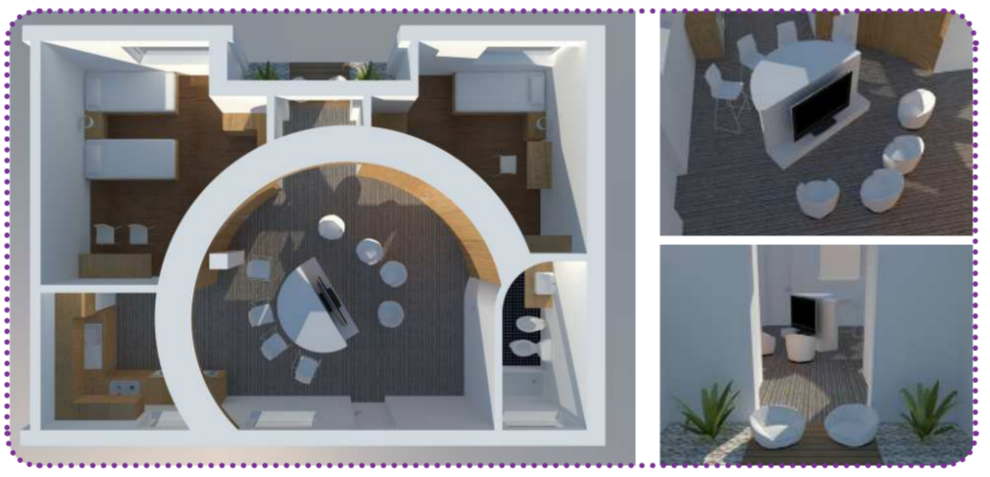
Three-room flat 2



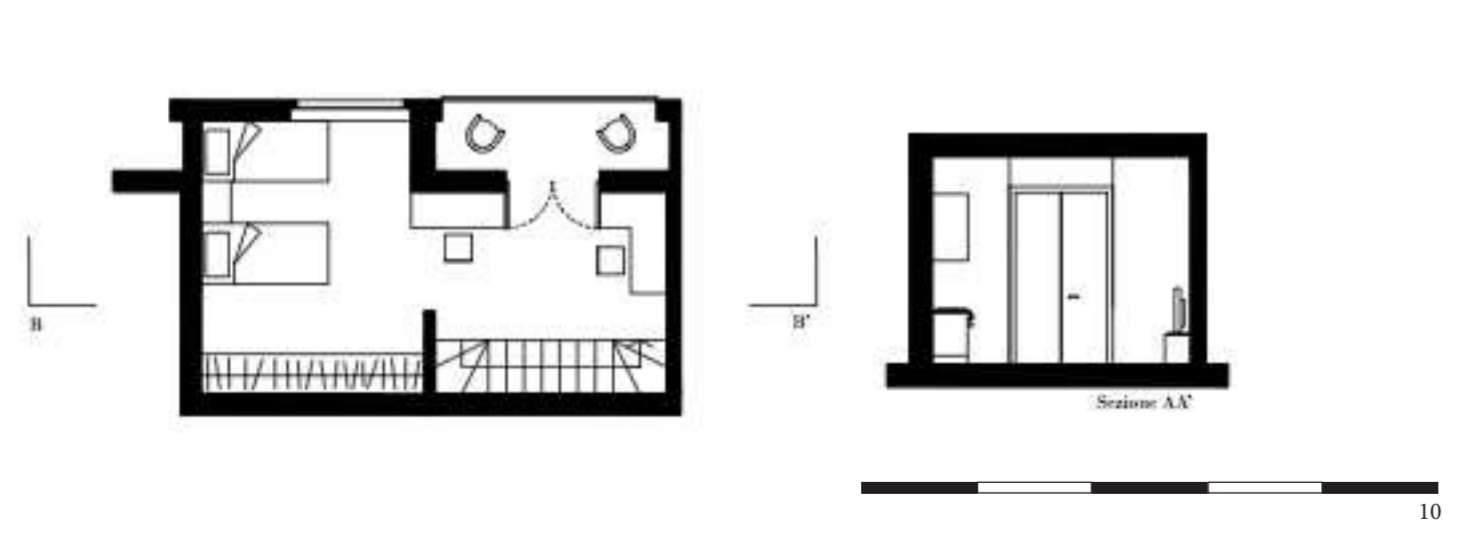
72,47 mq- 3 people- own balcony



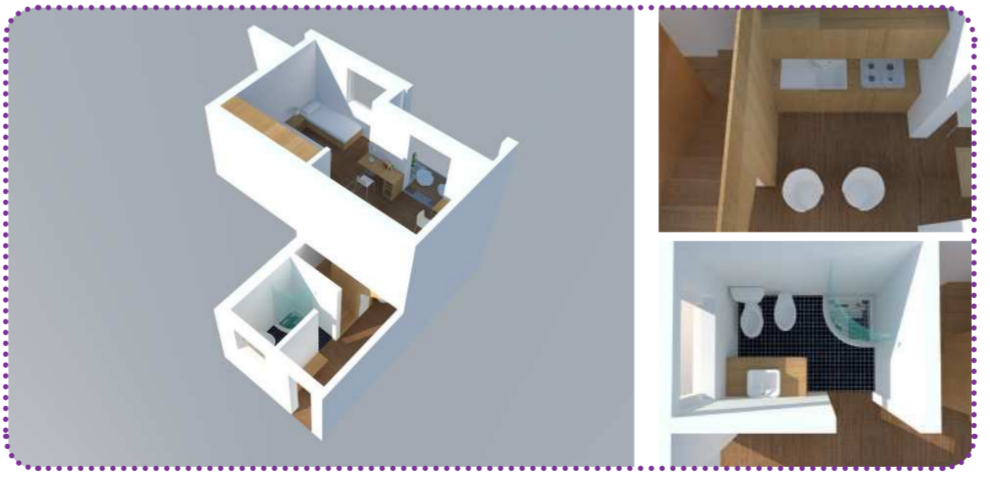
Three-room flat 3



72,47 mq- 3 people- own balcony



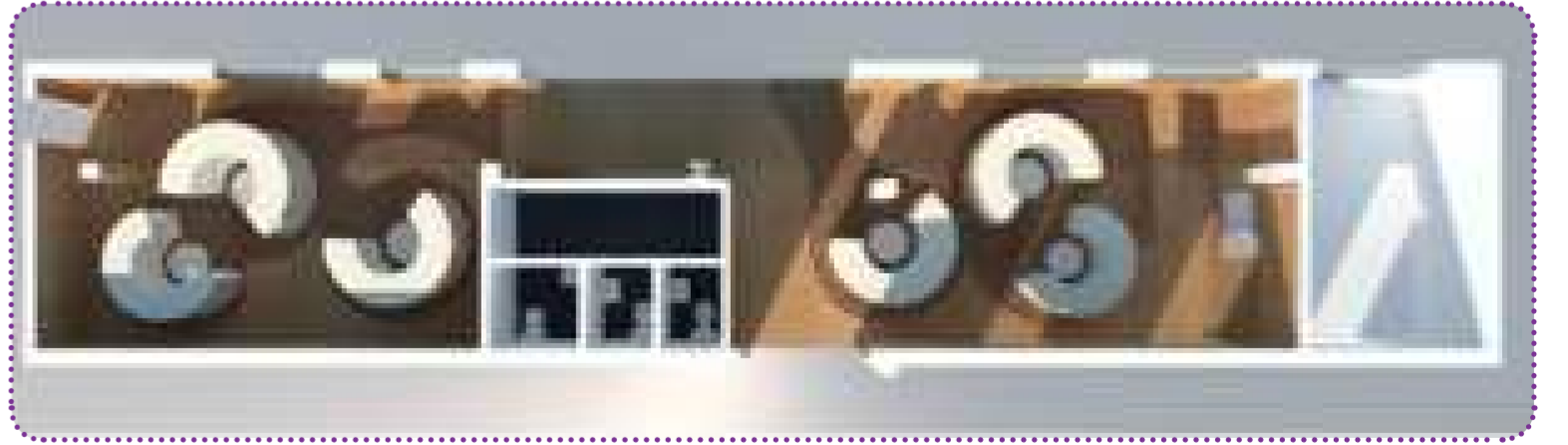
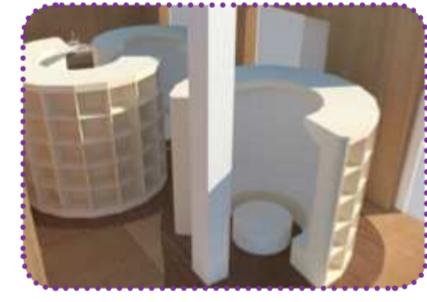
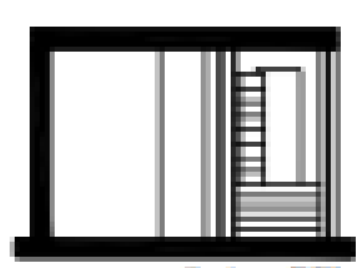
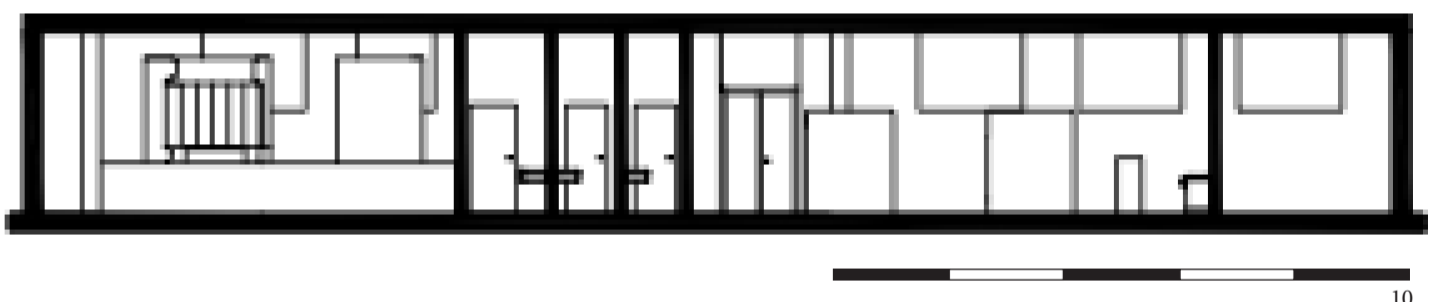
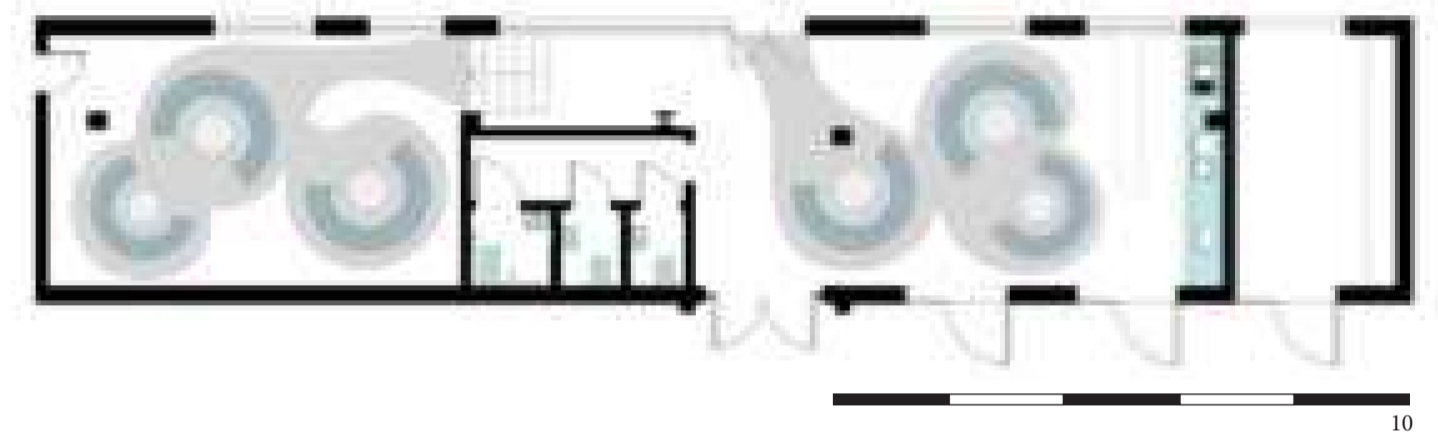
Two-level



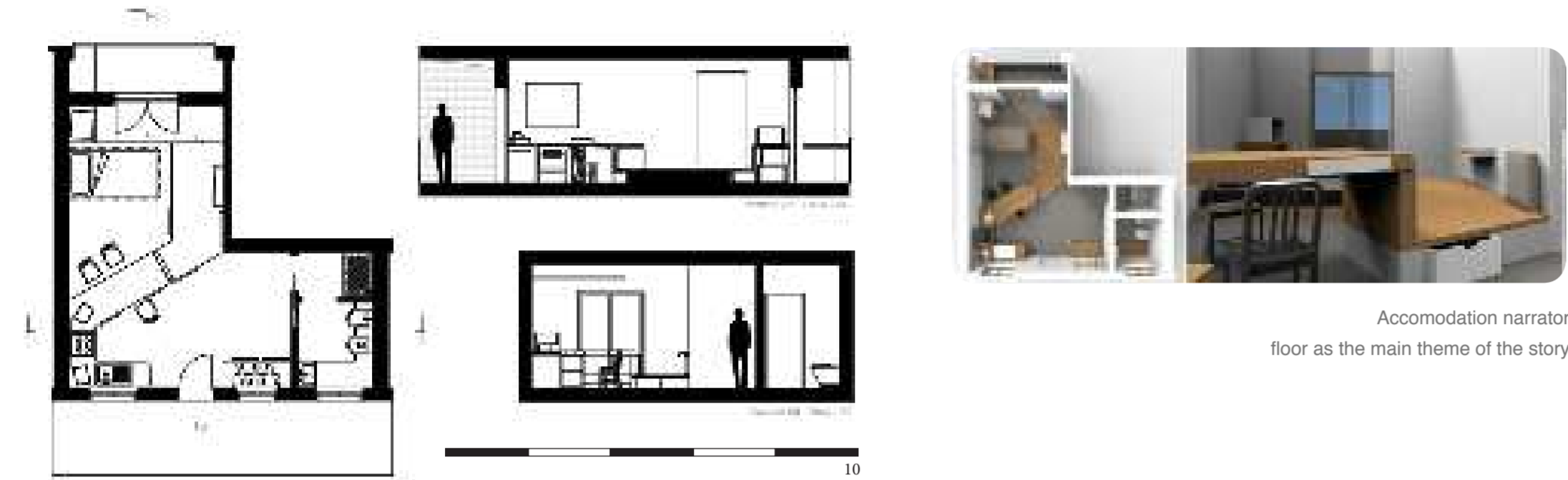
45,48 mq- 2 people- own balcony

Areas

Library



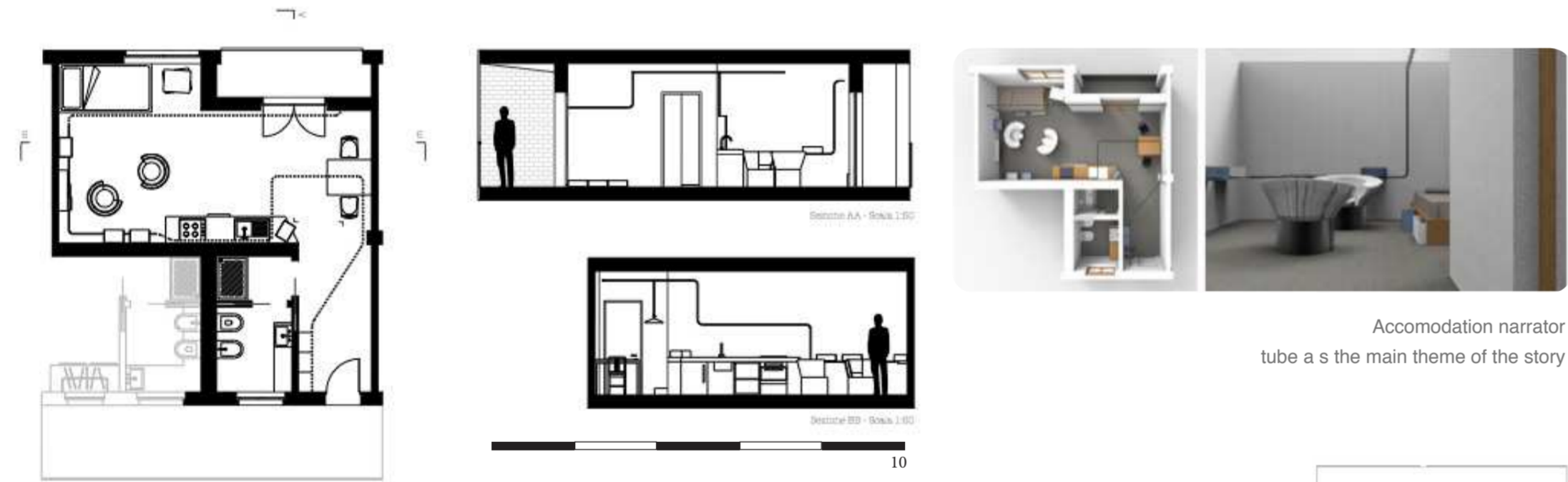
Accomodation



Accomodation narrator floor as the main theme of the story



Thread as a continous plane
Zooming through elevation levels

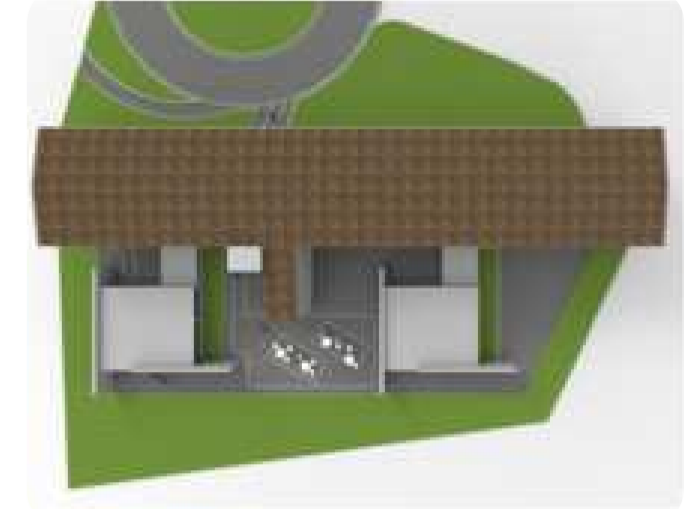
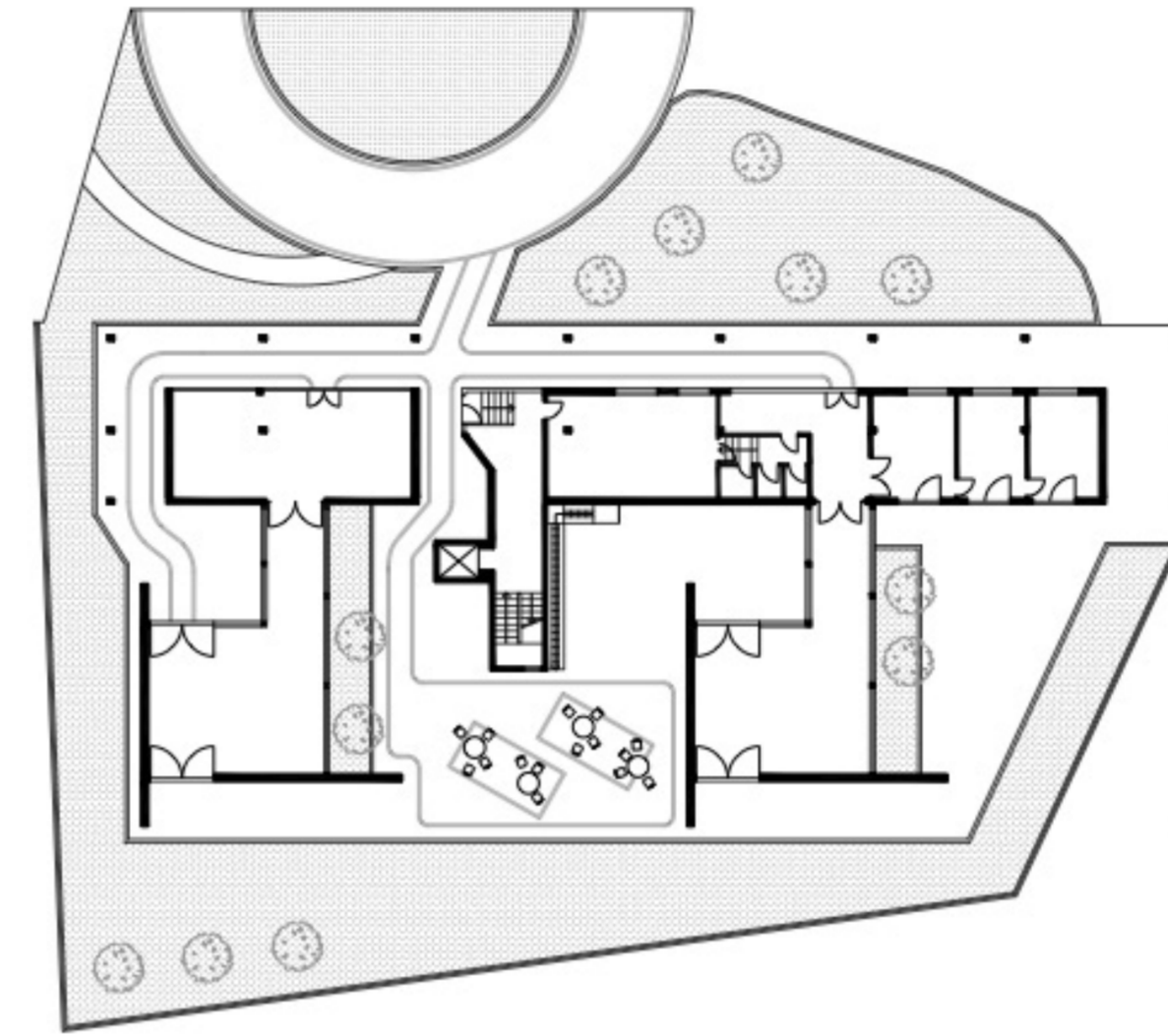


Accomodation narrator tube as the main theme of the story



Horizontal planes of the tube equipped
vertical portions anchored to the structure

Areas



Reduction of the fence marking
Invitation to stop
Convergence urban home
Open to district
Admission reserved

