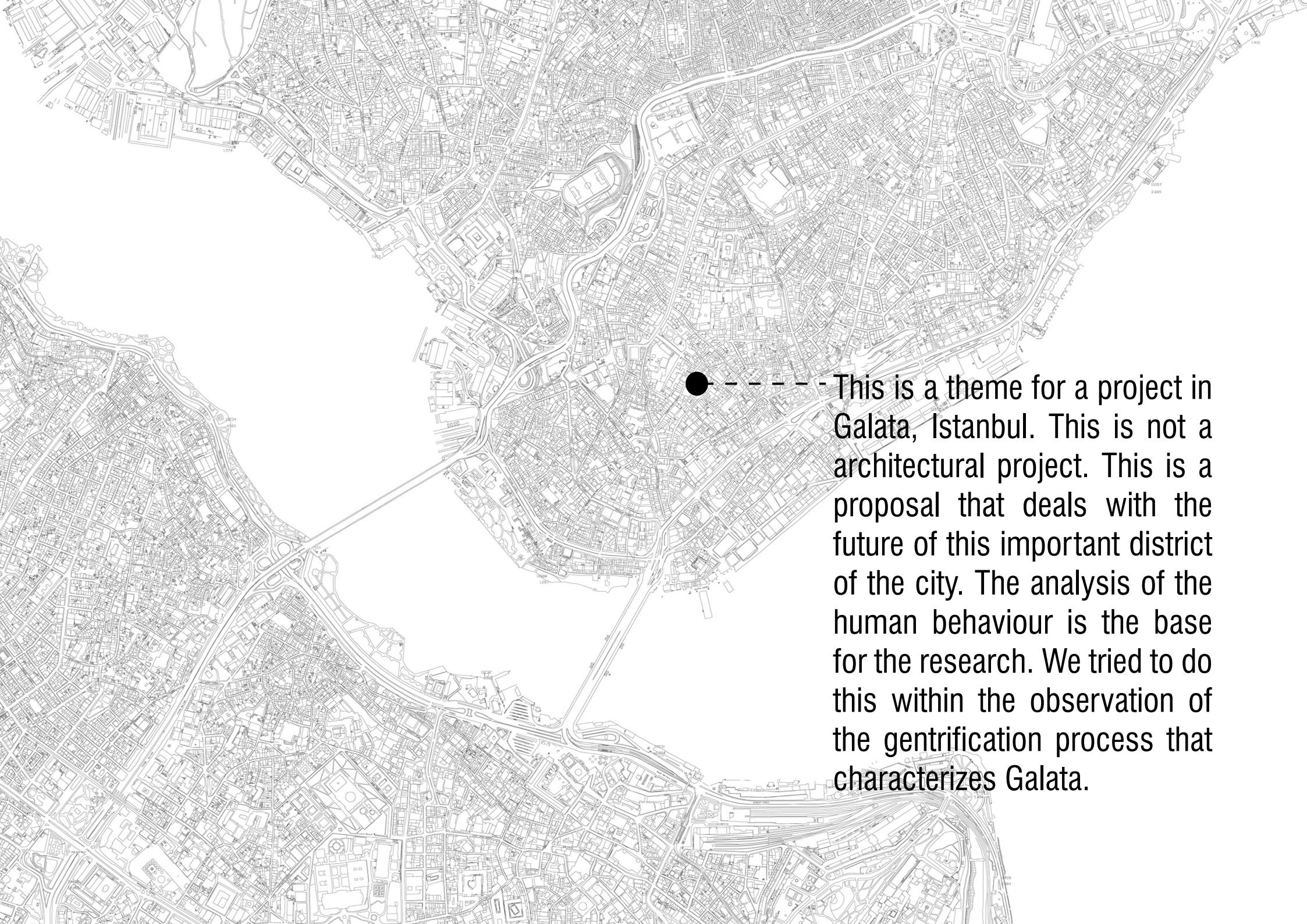




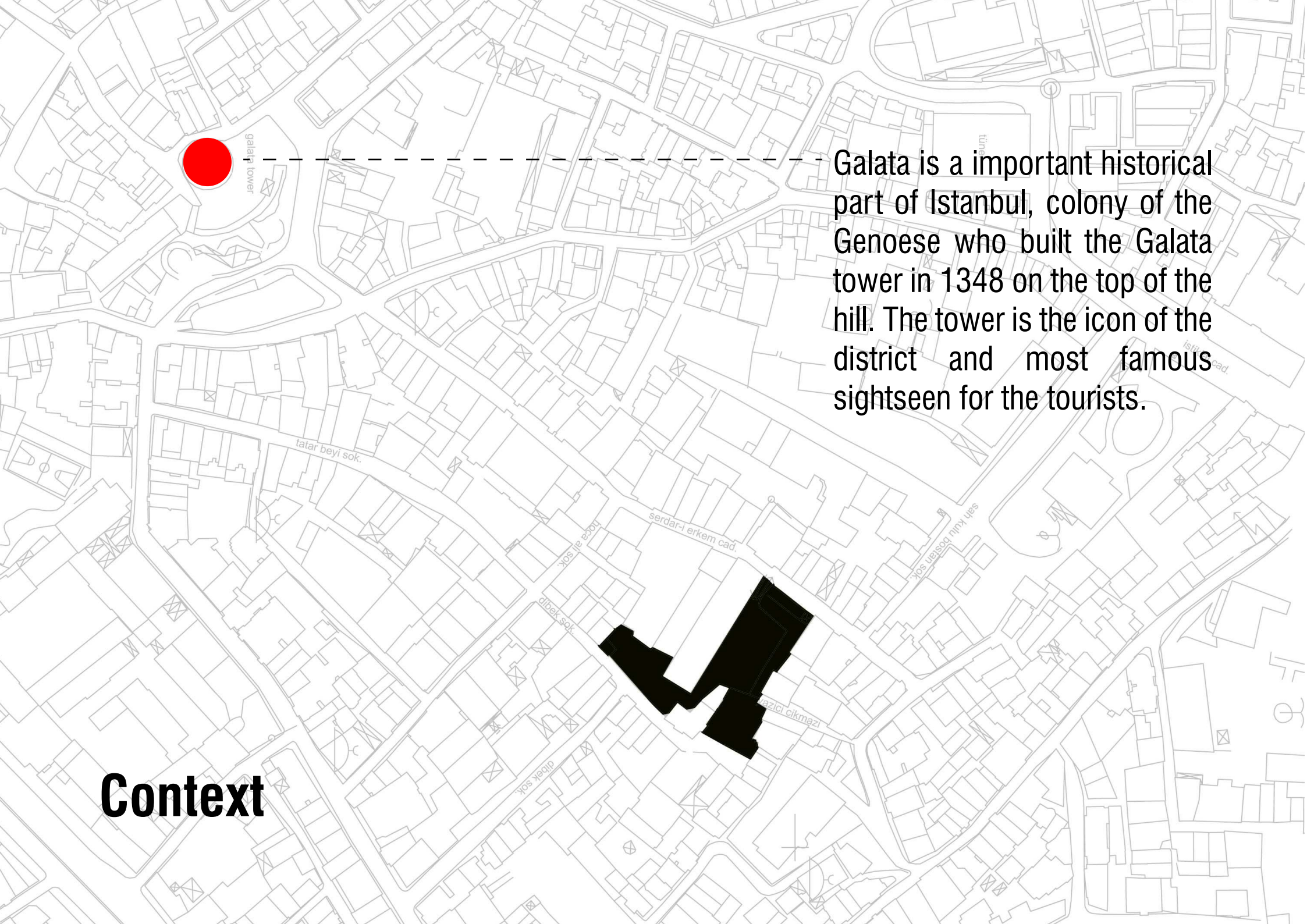
Alberto Zanelli
Bersu Celik
Selen Ergor
Eda Ekinci
M. Ali Khodabandeh
Giulia Giannetto
Catalin Berescu

INSIDE(RS') GALATA

Theme for a project



----- This is a theme for a project in Galata, Istanbul. This is not a architectural project. This is a proposal that deals with the future of this important district of the city. The analysis of the human behaviour is the base for the research. We tried to do this within the observation of the gentrification process that characterizes Galata.



Galata is a important historical part of Istanbul, colony of the Genoese who built the Galata tower in 1348 on the top of the hill. The tower is the icon of the district and most famous sightseen for the tourists.

Context

In ancient times the district of Galata was the hometown of different cultures. From Byzantine to Ottoman Empire and to The Turkish Republic. Arabians from Spain, Italians, French, British and Russians came to live and made trade here. They affected lifestyle of people living here and created the new mixed culture of Galata.

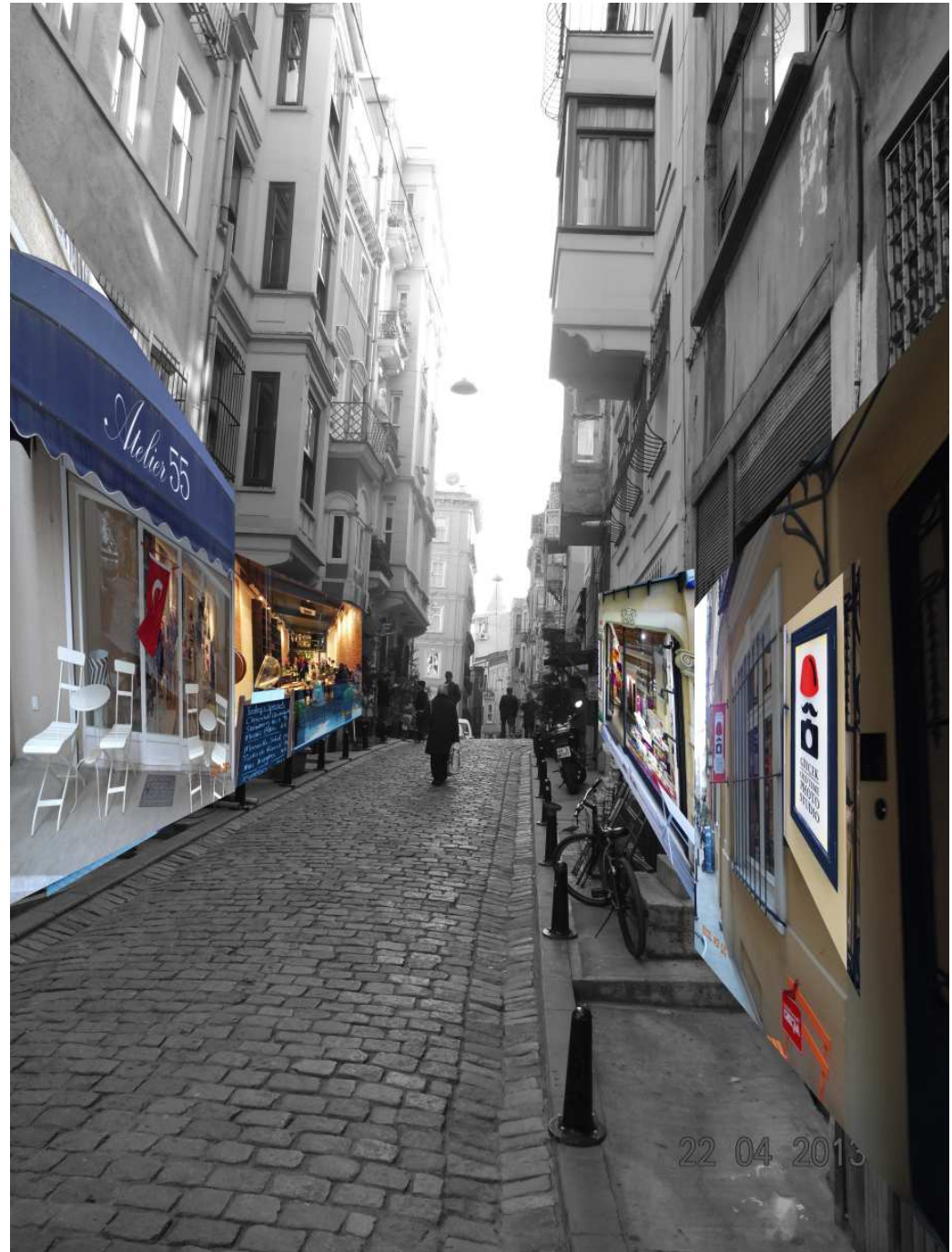
Context



Galata is a place of changing. In time, buildings changed, places changed, people changed and the life changed.

Many modest people used to live in this area. But nowadays new people coming to Galata and they are changing the face and especially the lifestyle in district. But in this case, what happens to the local people of this area? To unemployed women with their children? What's happening or what will happen between these two kinds of people? Are they seeing each other? Are they talking, sharing or doing something together? So what are this people feeling about the area?

Context





1. WOMEN OF GALATA

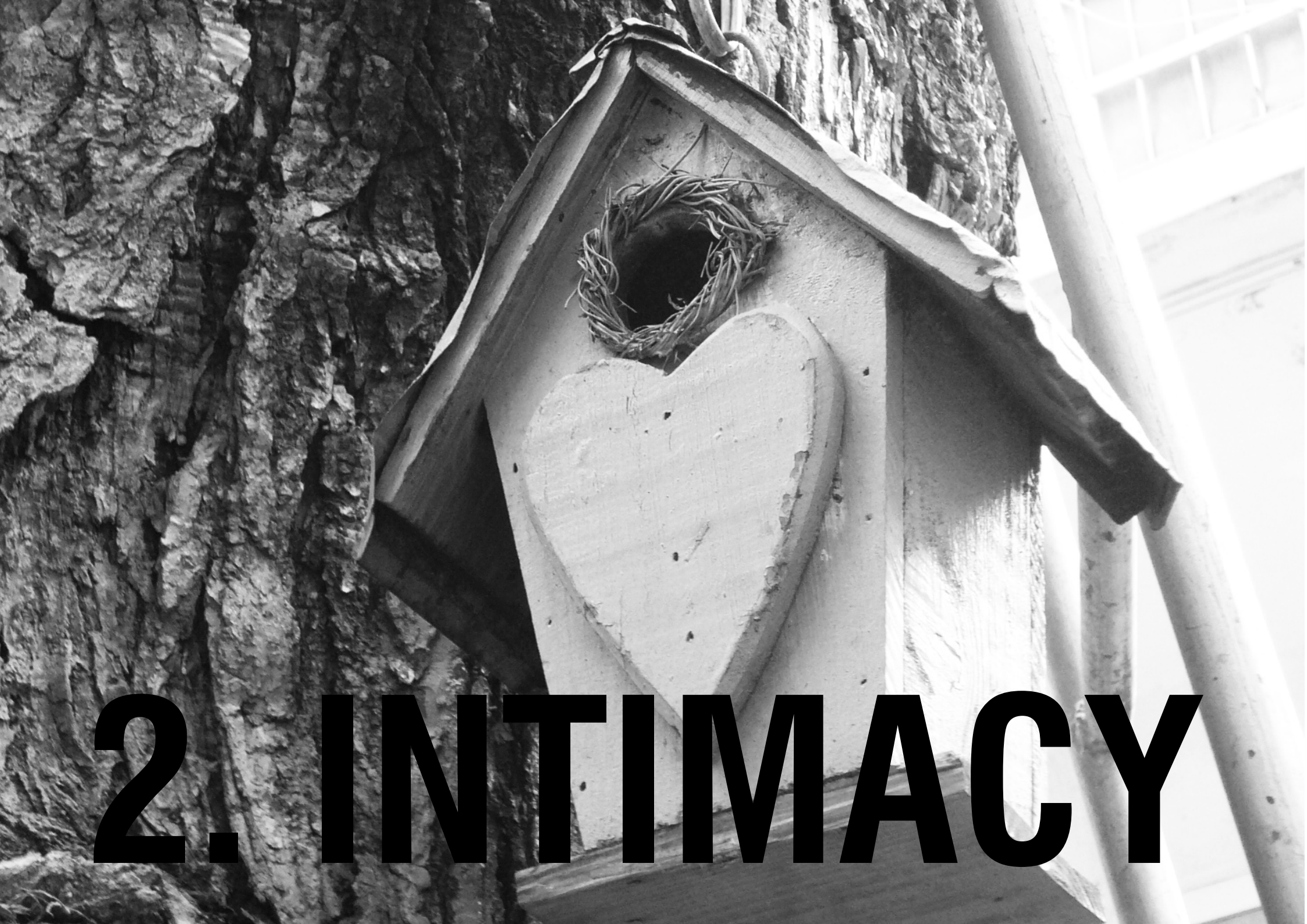
Women of Galata

A lot of children and women who are middle and low class-people are living in the district between Galata Tower, Istiklal and Meclis-i Mebusan Street. On the other hand, people of this area are changing because of this gentrification process. More educated, high income people are starting to live here. Because of the gentrification process, the women and the children can not adapt to this process. They don't feel that they belong to this neighborhood. Women can not do anything in the neighborhood except for sitting at home. At the same time, children don't have a place to play in the neighborhood or learn something about some skill or knowledge. Therefore, they have to stay at home too or play in the streets. On the other hand, they have big potential to be part of production and city life in this neighborhood. What can help them to connect with city life? How do they accept this gentrification process and find a place for themselves? For the local people of this area, educational acts get together with women and children in the same place. The women of this neighborhood can be educated with their children in the same place and they can learn a lot of skills, produce some goods and be part of neighborhood's life.





Functional choice: Education centre for women and kindergarden



2. INTIMACY

Intimacy

The modern life, although it has its benefits , took away the intimacy and friendship between us and our neighbors. Who takes time to get to know them anymore? Do you know what their names are?

This destruction of intimacy seems to miss Galata district. When you examine the plans of the area, you won't notice the courtyards and secret pathways. But when you explore them yourself you can see that they do exist and they are really important. The importance of this in-between open spaces is that it represents the residents' way of living and their boundaries of personal space. Here in Galata, you have a secret place to share with your neighbors and use the area according to your needs. It doesn't matter if it's used as a laundry room, a playground, a depot, a gathering area for neighbors, an empty lot to build another house. The spaces between the buildings seems to bond the inhabitants. Doğan Apartment is a great example of this situation. They have their own courtyard that is secured by a guard so that they can protect their collective intimacy from the tourists. Also with the help of vegetation they managed to create an optimal space to themselves.



Filled space



Voids



Therefore, we tried to use this and reflect it into our proposal by creating an area behind the school in order to create an intimate space for the children and for the women of Galata. In a way we are going to continue this situation with our education center's courtyard.

Typological choice: Courtyard building



3. MONEY MAKING MACHINE

Money Making Machine

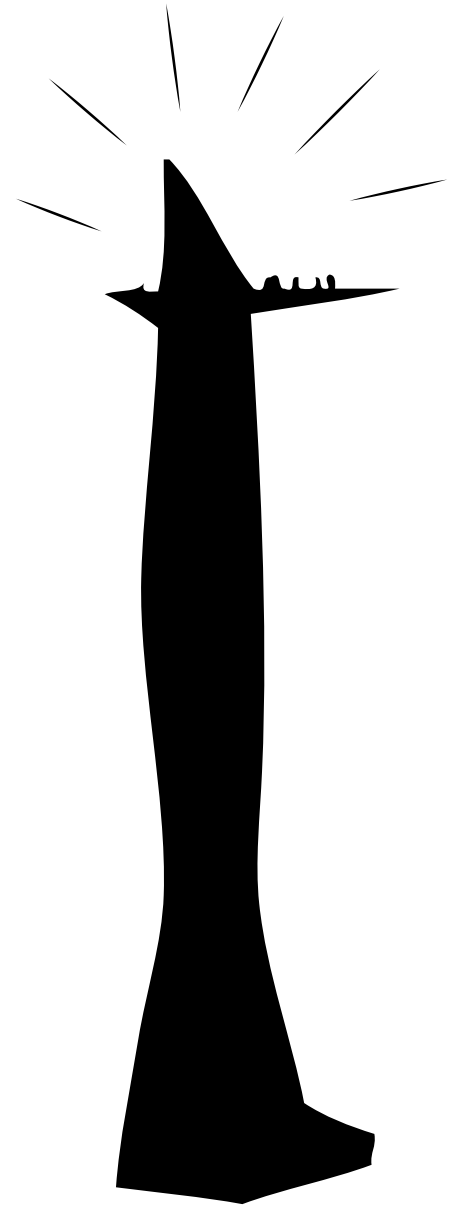
What is the future of Galata? Is it really going to be the next Venice?
A new city without citizen?

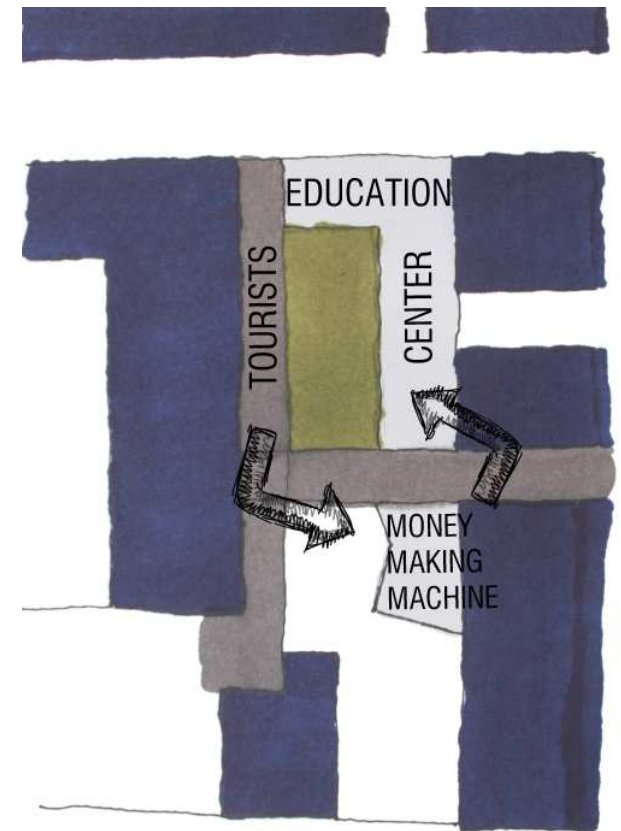
Our goal is to keep the inhabitants in this area much long as possible.
To avoid the exodus from their tradition and their way of living. The educational centre is our answer to this intent.

But we have to deal with the gentrification process, with the tourists assault/opportunities. How can we propose a no income function in such economically attractive area? We need a money source that can provide the funds for our social goal.

We need a money making machine.

The idea is to take advantage of the tourist obsession for city icons and to create a new iconic place as tourist attraction. It could be, but it's just one possibility, a new sightseeing place, a new thin tower that reports the new hype of the district in contrast with the historical importance of Galata tower. The making money tower could be the reference for the new Galata, but at the same time the economic source for our proposal. The visitors will have to buy a ticket to see the exhibition going on around the tower base and to reach the top of it and enjoy the beautiful panorama of bosphorus strait.





Strategic choice: panoramic tower



4. CONFLICTS AND RECONCILIATION

Conflicts and reconciliation

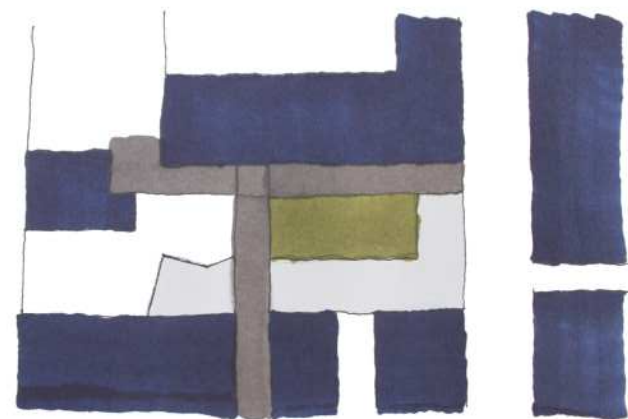
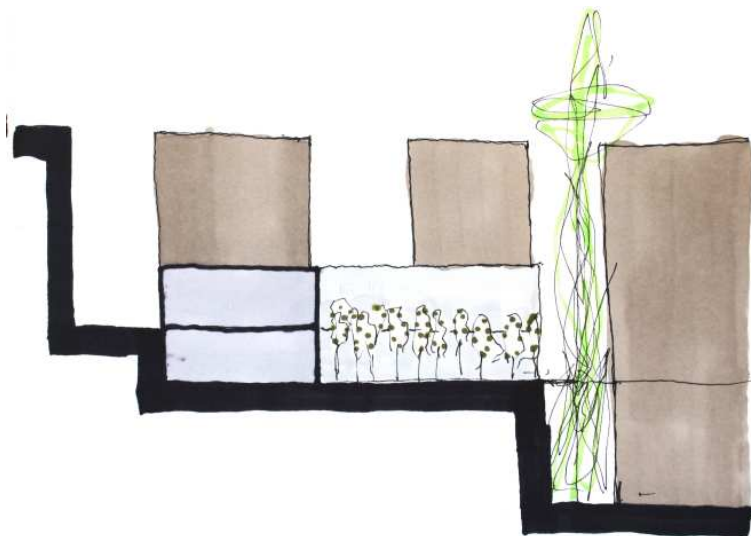
By creating a space for housewives and children, we are favouring a reconciliation process between the area and the inhabitants. And by making a tower nearby, although it's a 'touristification' thing and conflict of the area, we are creating a space for earning money for the school. So the 'conflicting tower' is exactly related to the reconciliation of the people. The two contrasting functions will operate together

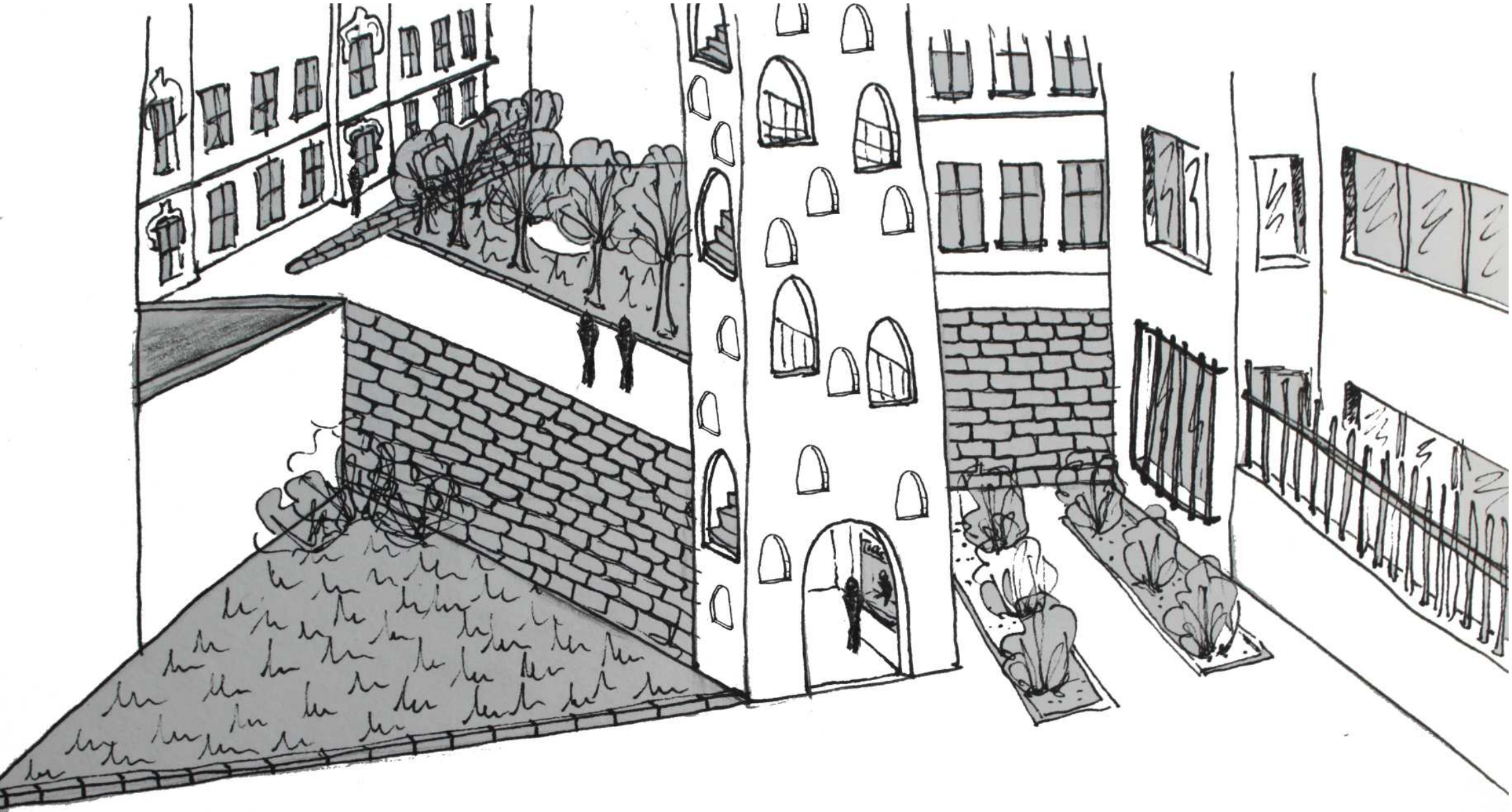
for the benefits of the local citizen and will be an example of usefull conflict.

The educational center will be an intimate place, a peacefull bulding close towards the street and open to the garden.

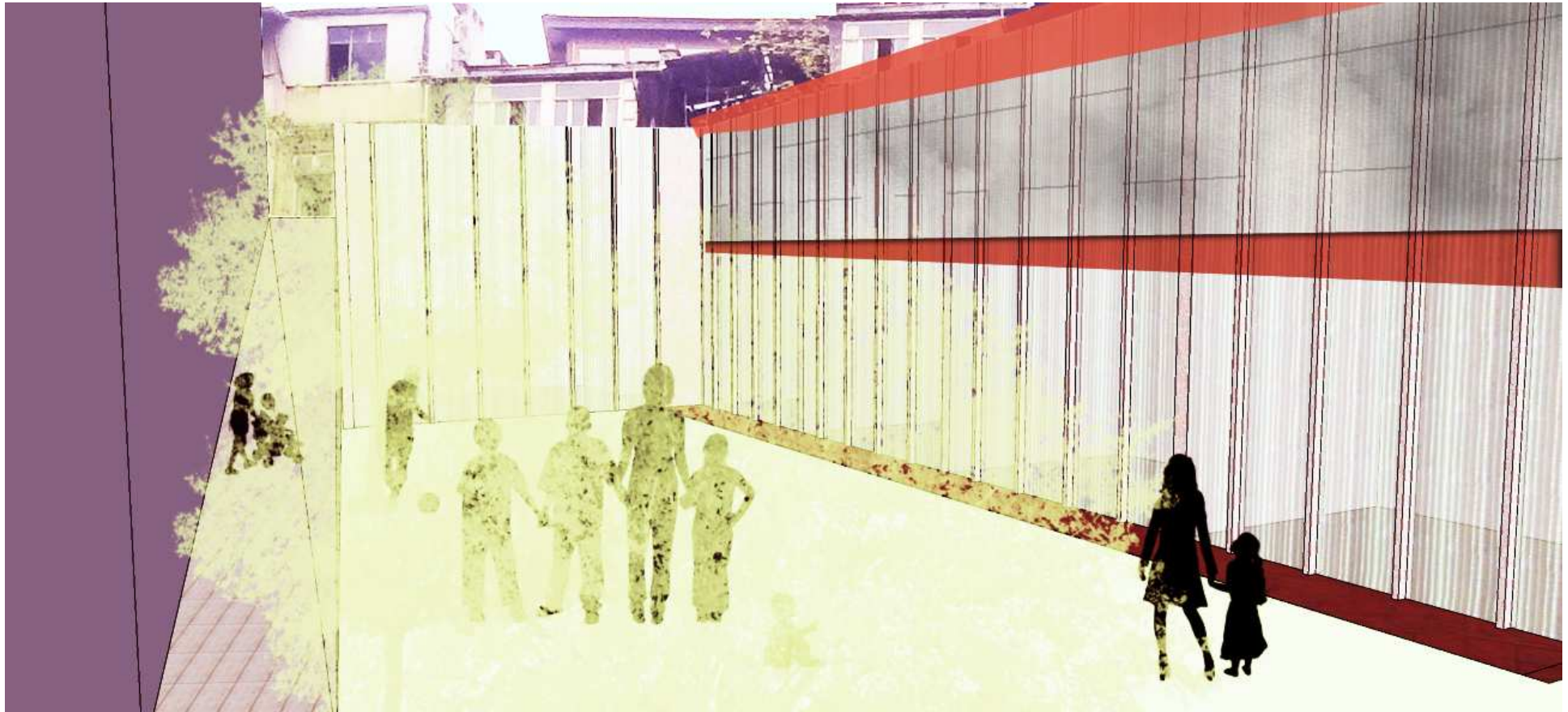
The building is used as tool to keep people together.

The kindergarden is a place that can create strong memories in children minds; growing, learning and playing in Galata is way to remain attached to the place where they are born.

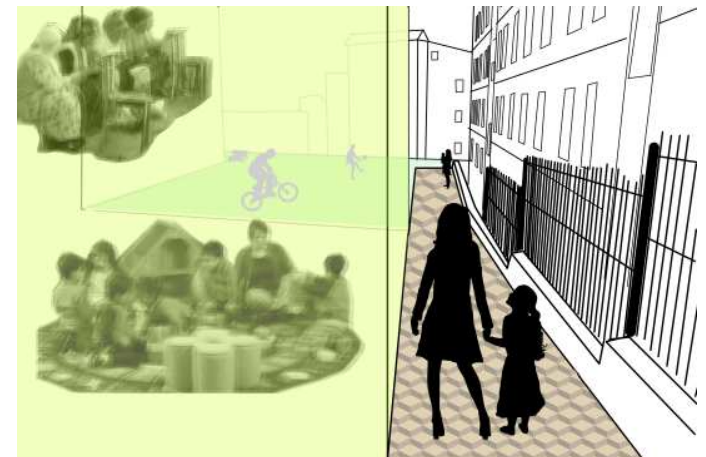


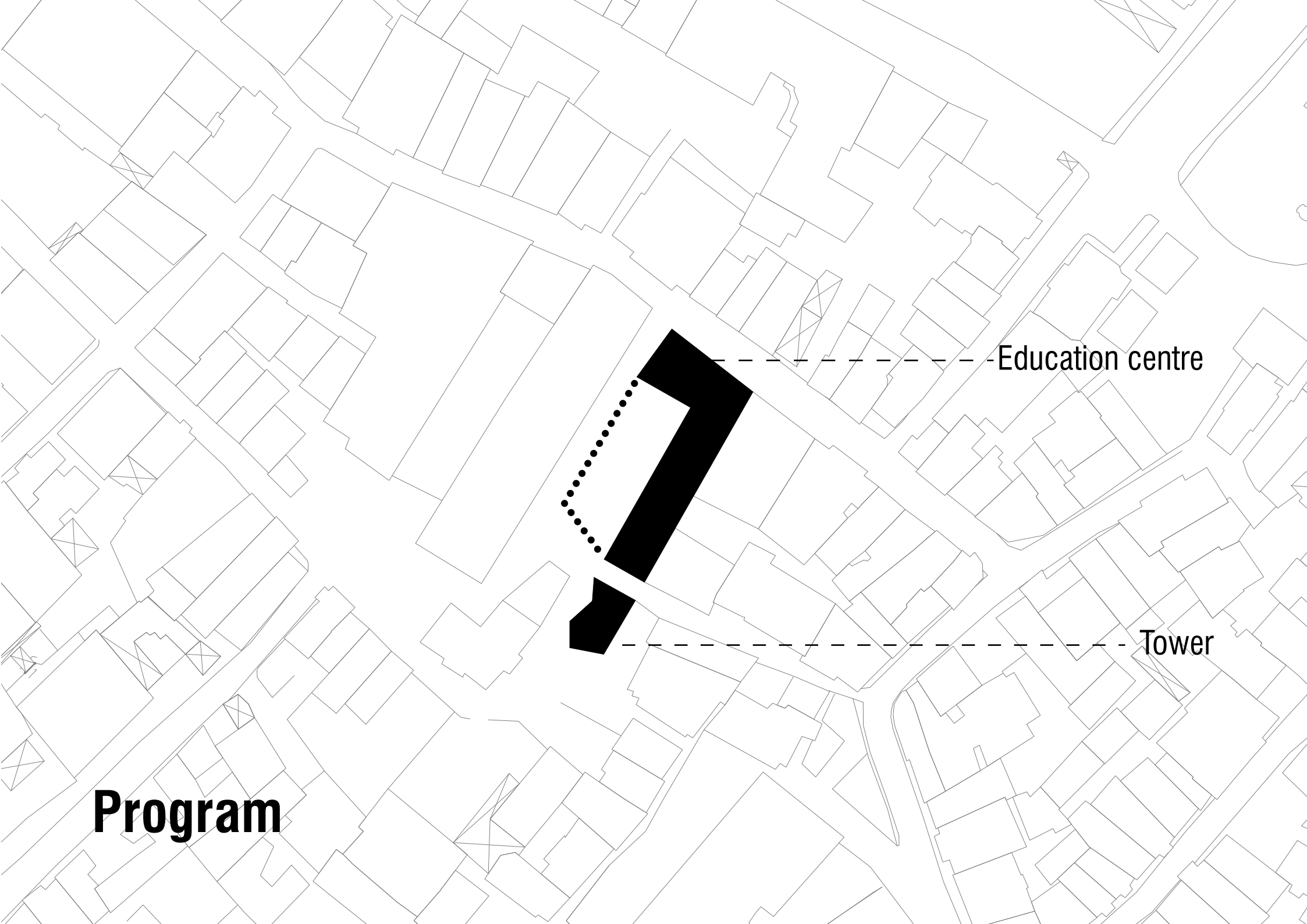


Sketches:The exposition area and the tower



Sketches: The courtyard





Education centre

Tower

Program

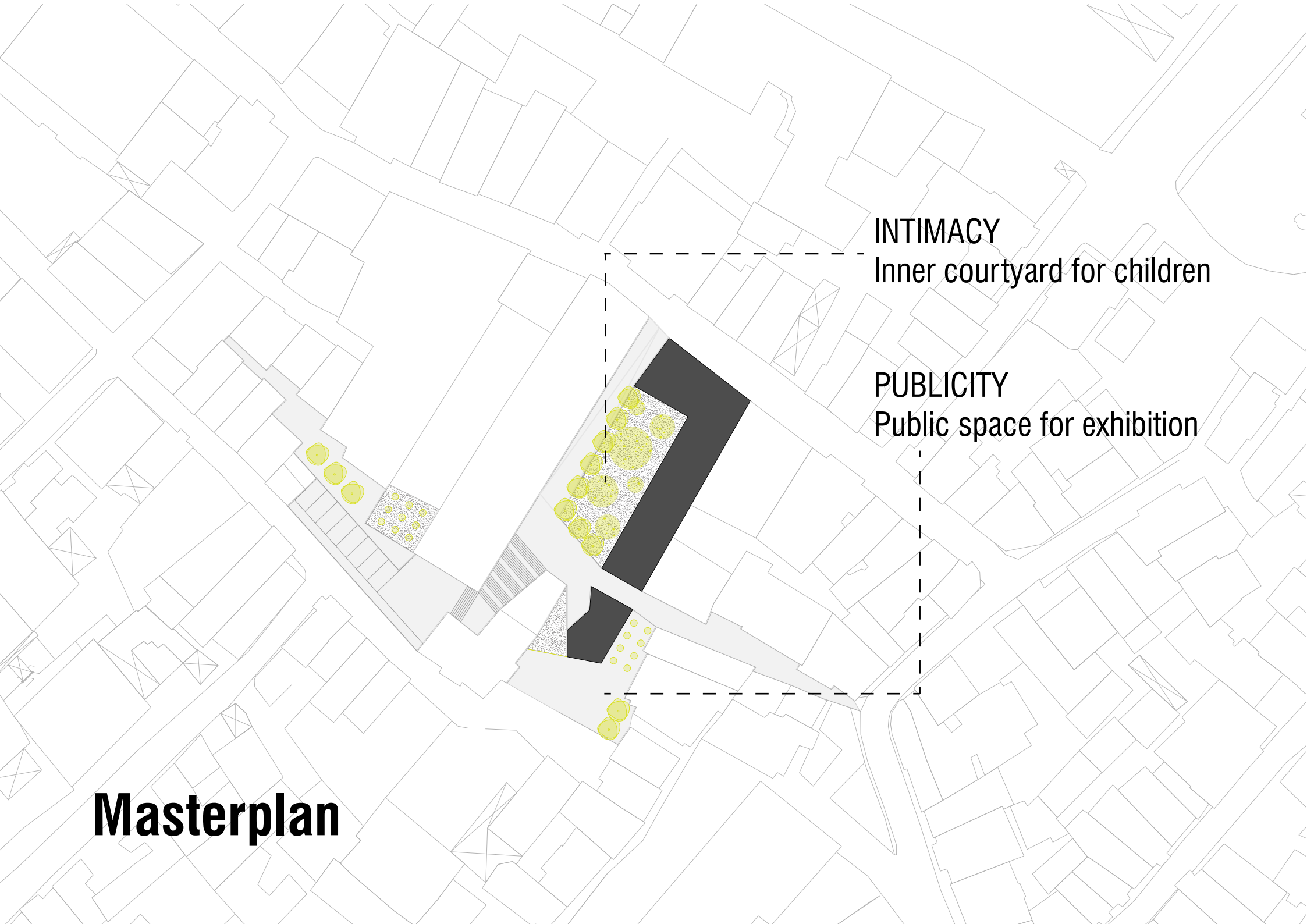
Masterplan

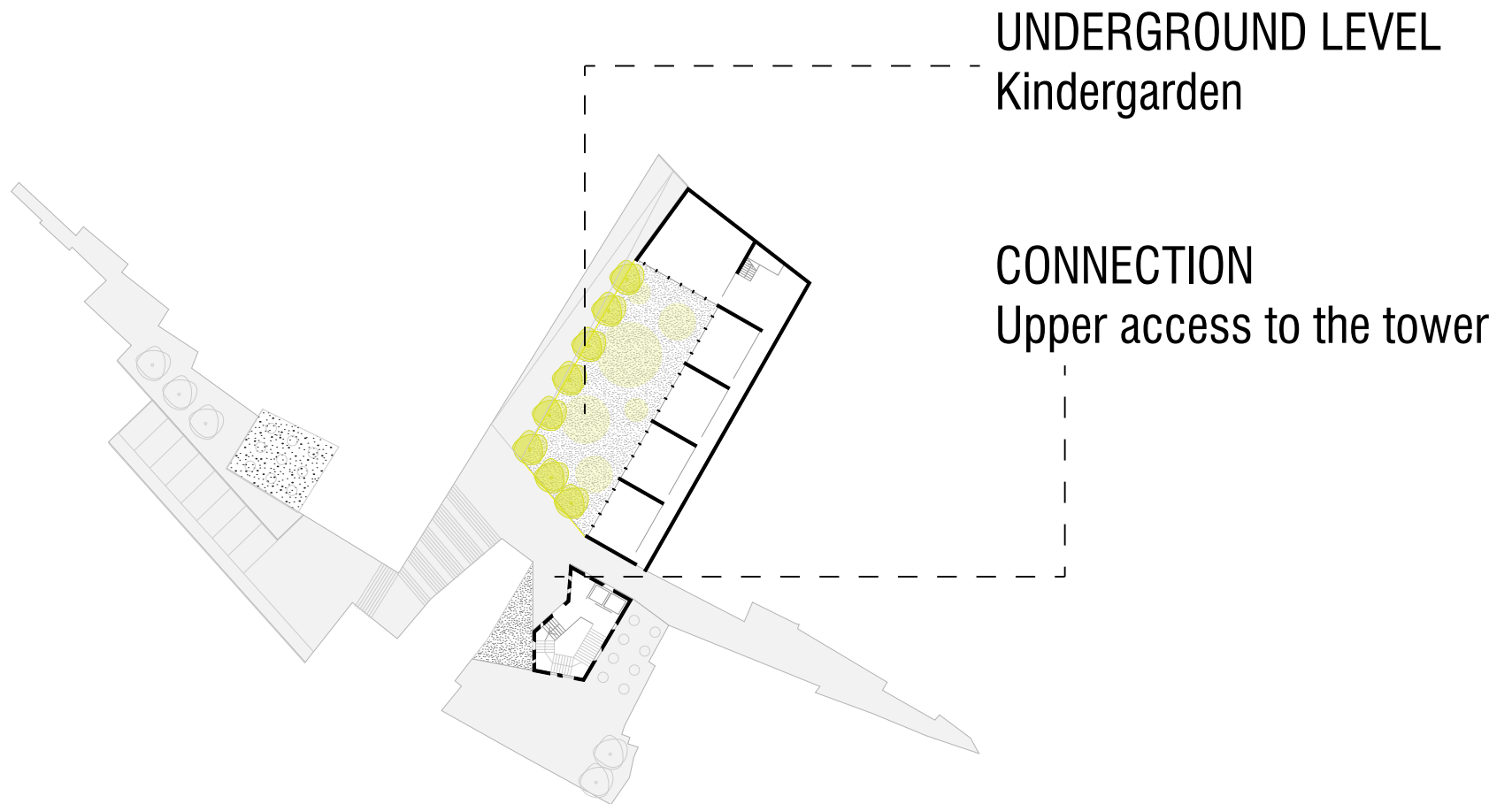
INTIMACY

Inner courtyard for children

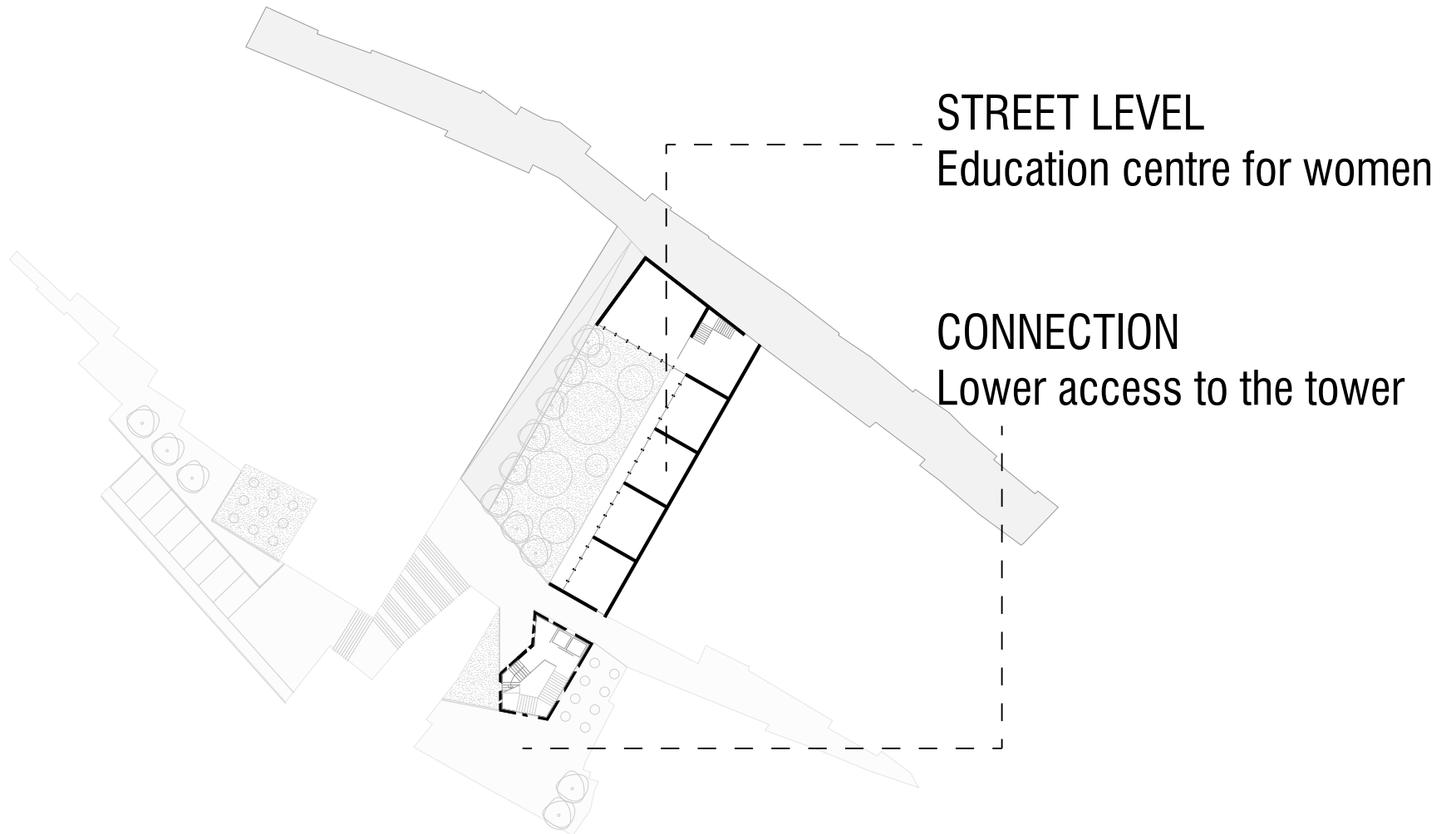
PUBLICITY

Public space for exhibition





Function level 0



Function level 1

Sections

