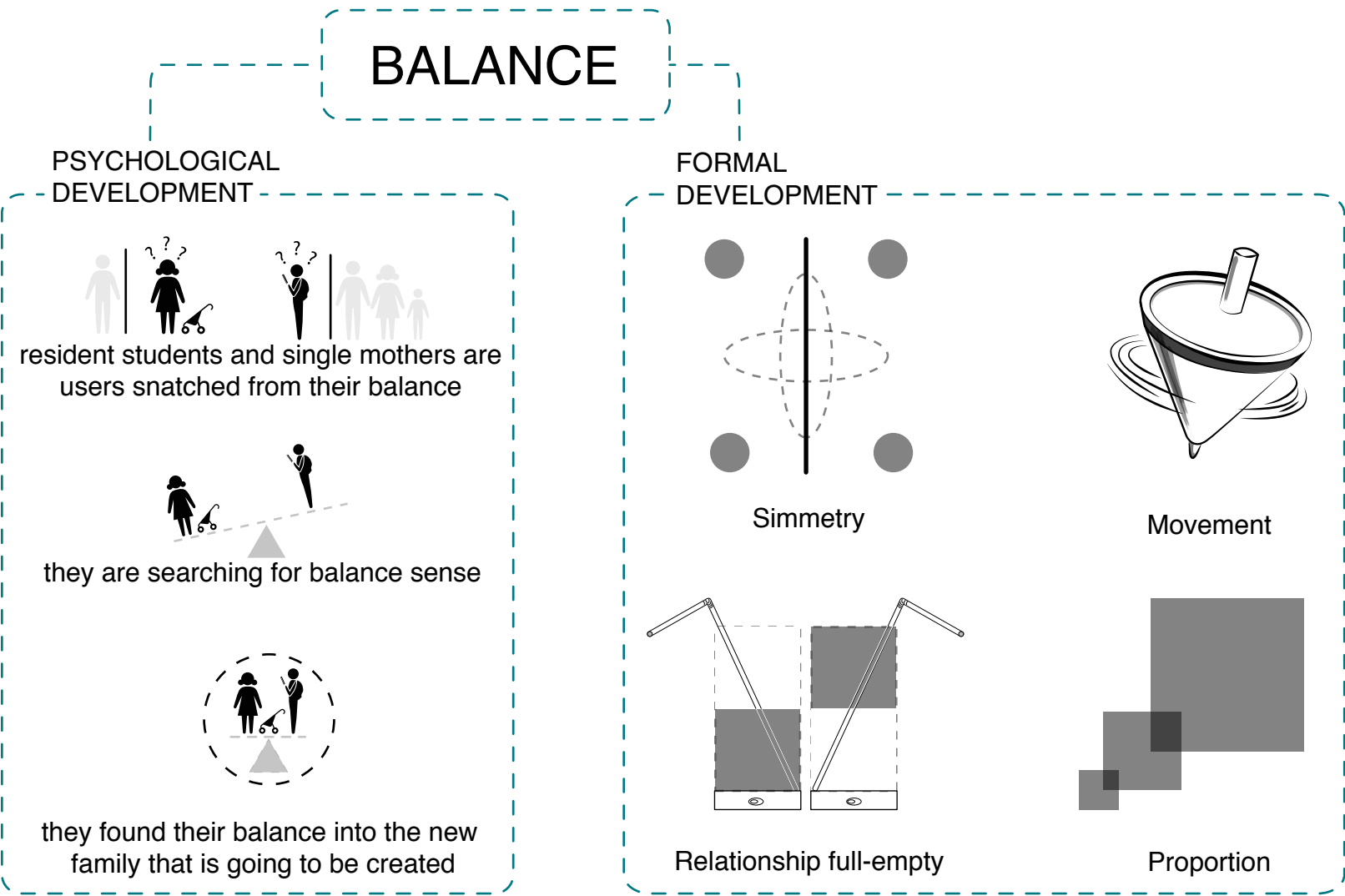


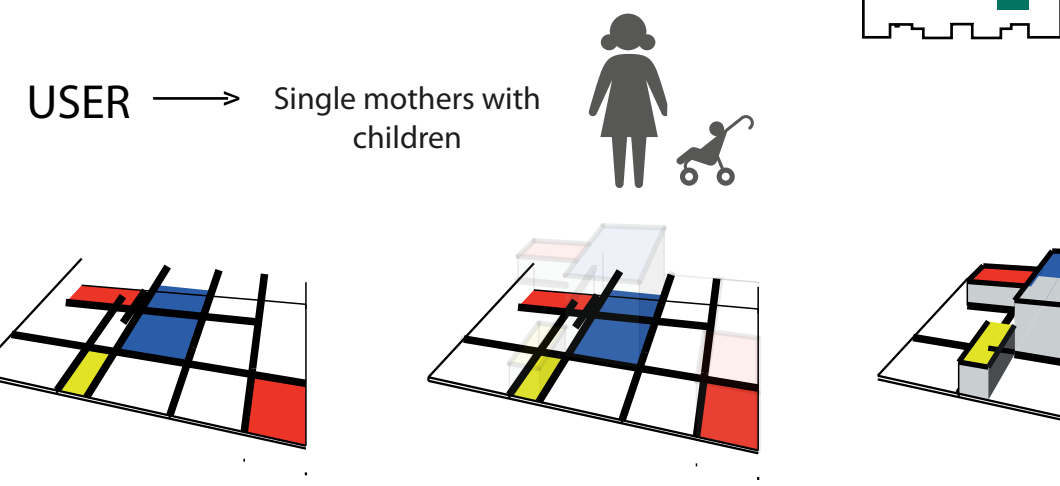
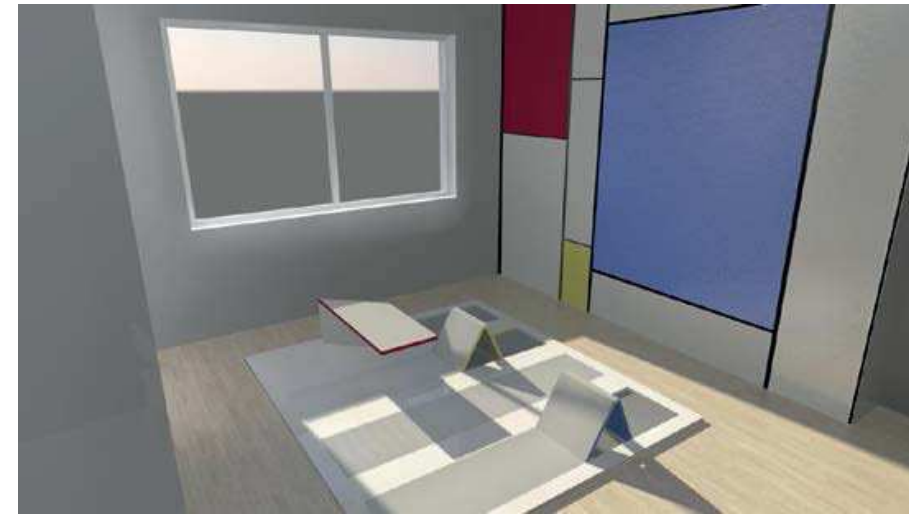
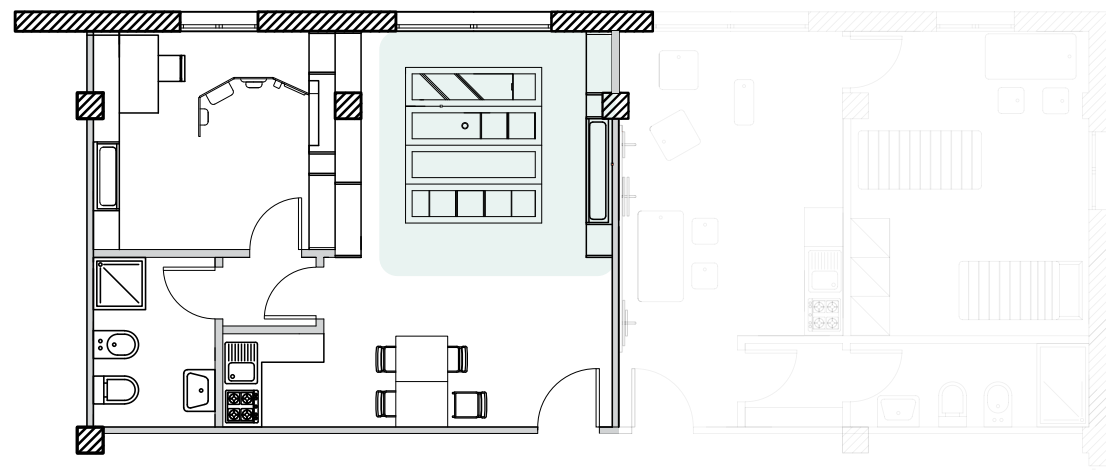
Balance

METAPHOR



Flats

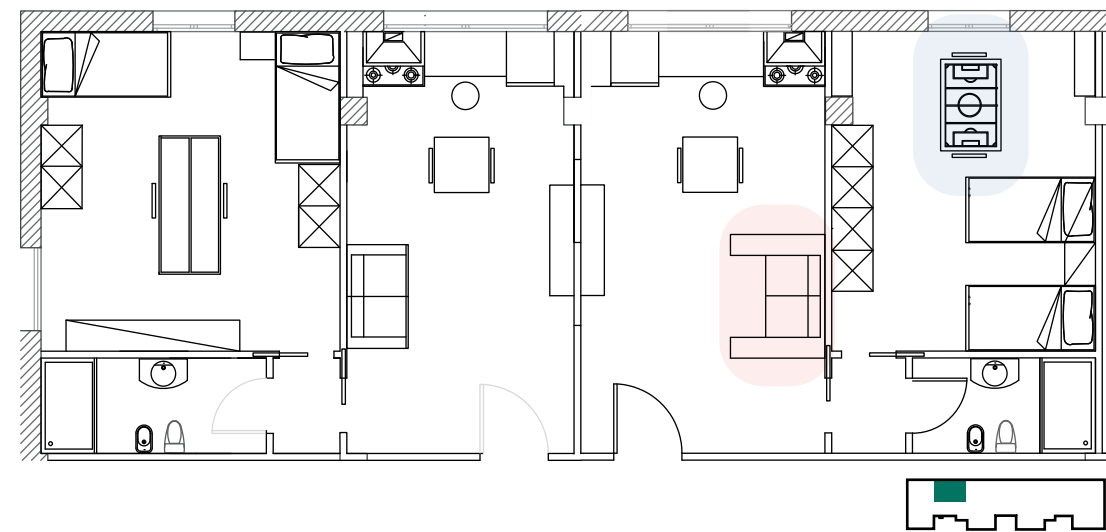
ONE ROOM APARTMENT



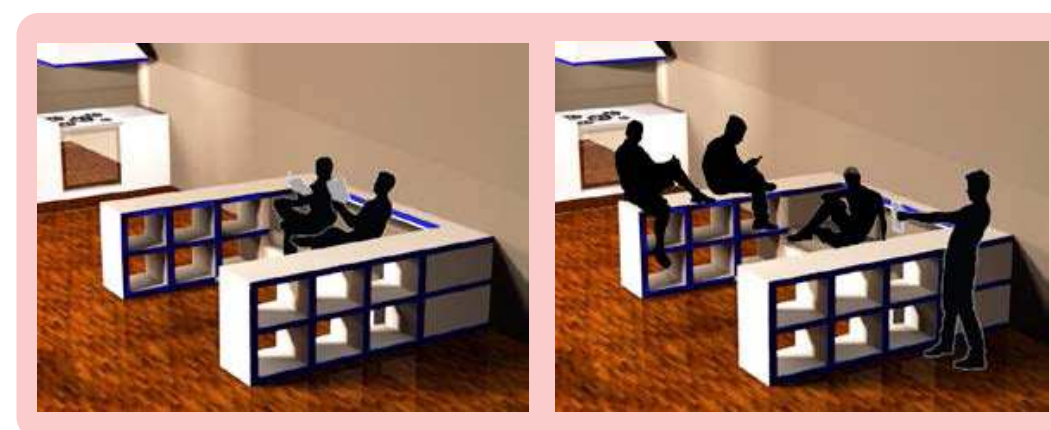
The balance has declined as harmony between simple shapes, picking the graphic style of the works of Piet Mondrian. The graphic subdivision of the space, defines

the spaces in which it is possible to extrapolate the volumes when necessary or hide them in case of need for increased floor area.

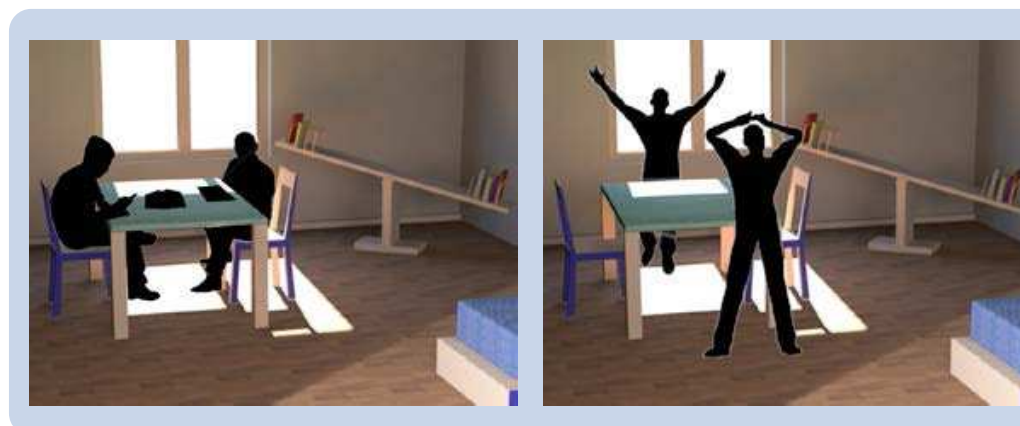
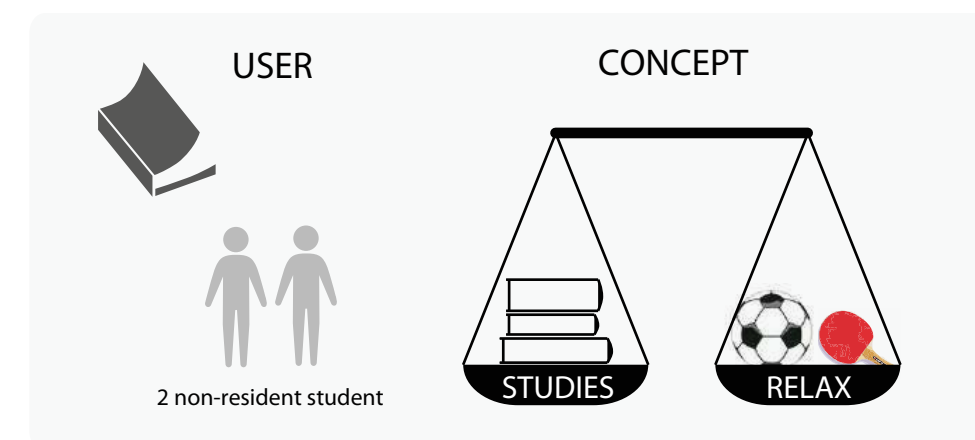
TWO ROOMS APARTMENT



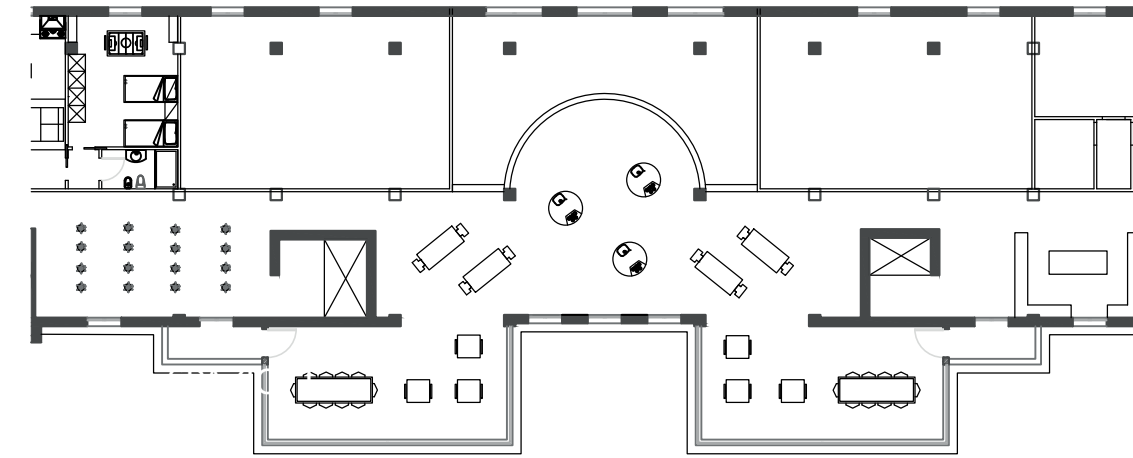
FLEXIBLE FURNITURE



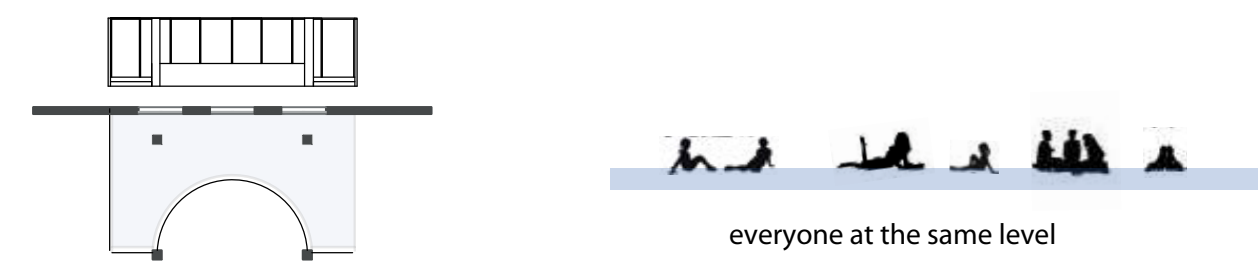
In this case the balance is designed as a balance between functions, which for students are study and relax. The furniture is flexible according to the needs of the different functions.



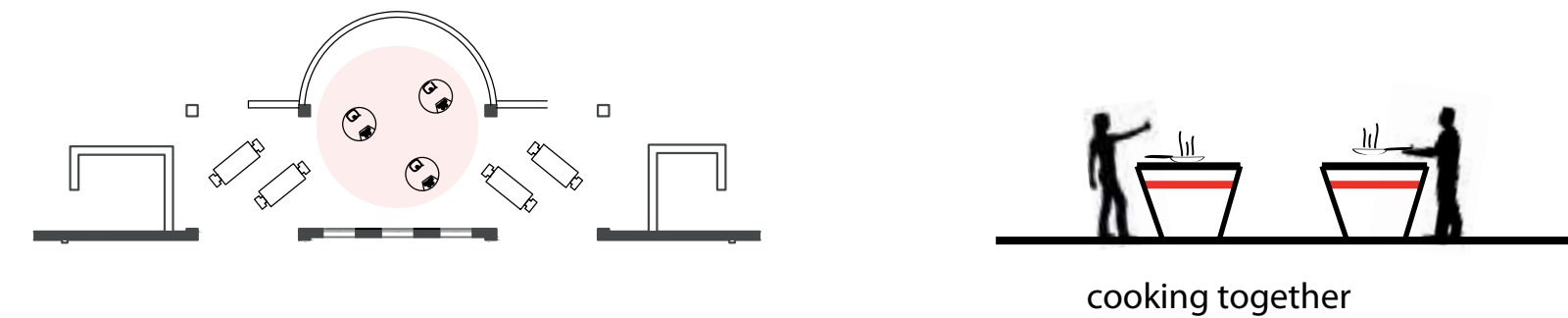
Family Space



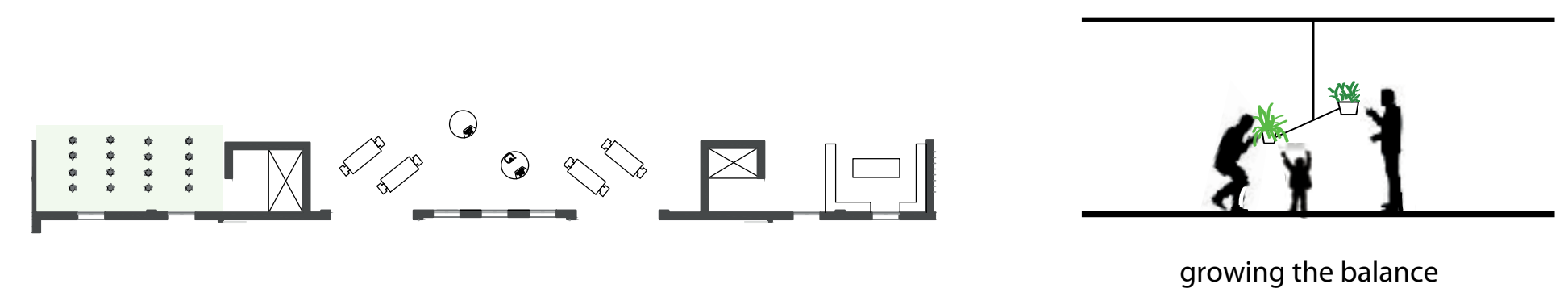
CARPET SPACE



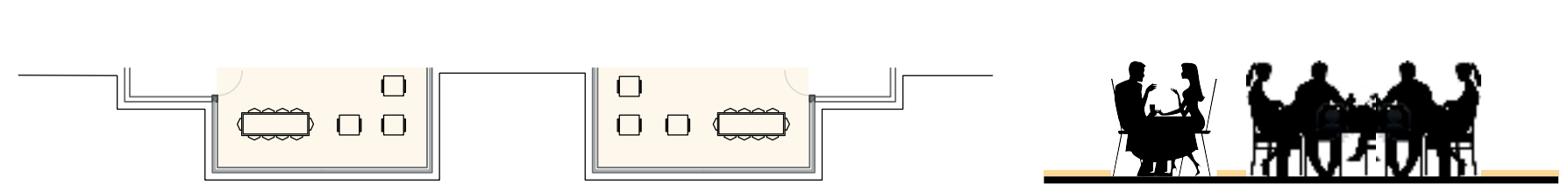
COOKING SPACE



COMMON SPICES GARDEN



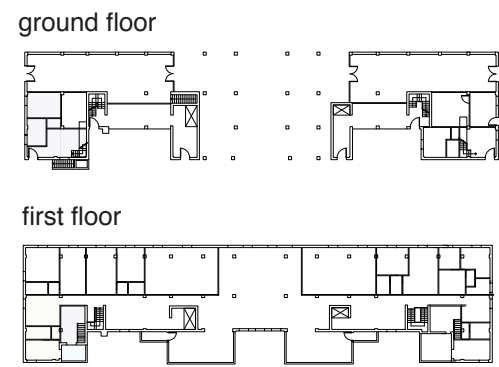
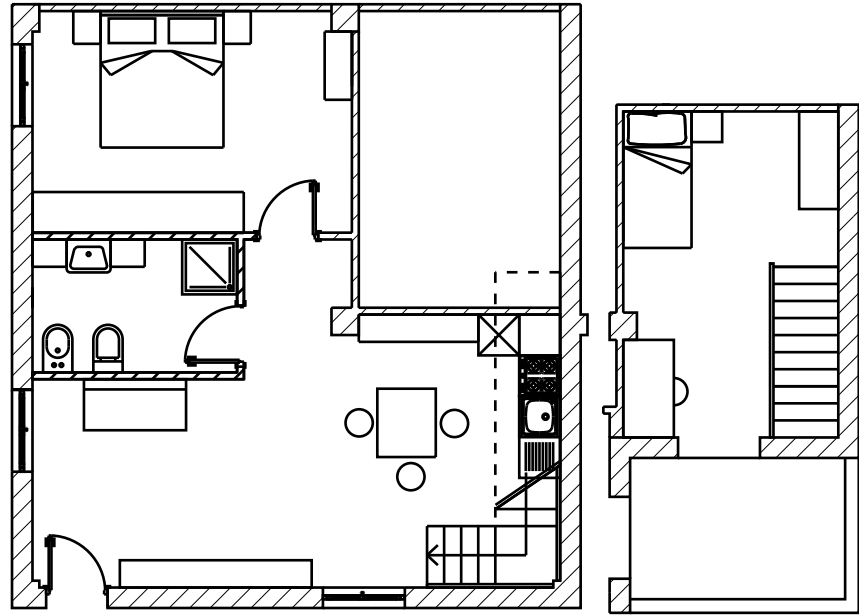
DINING ROOM



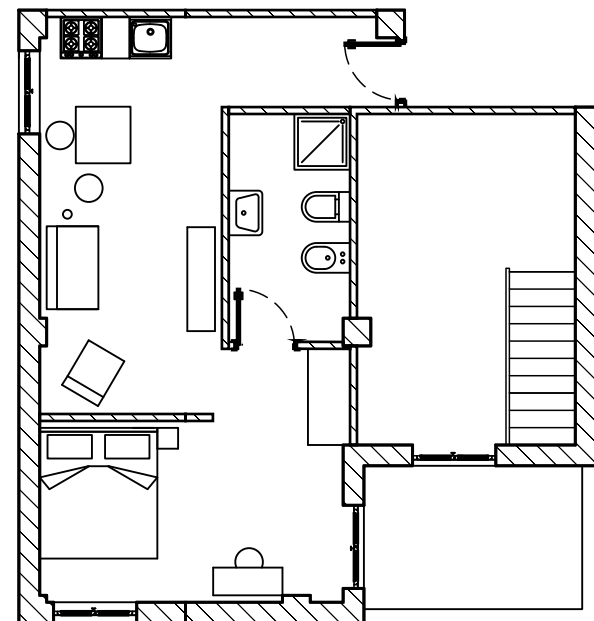
The family space is the psychological equilibrium's place where the users meet and interact through the devices proposed in order to create the new household

Flats

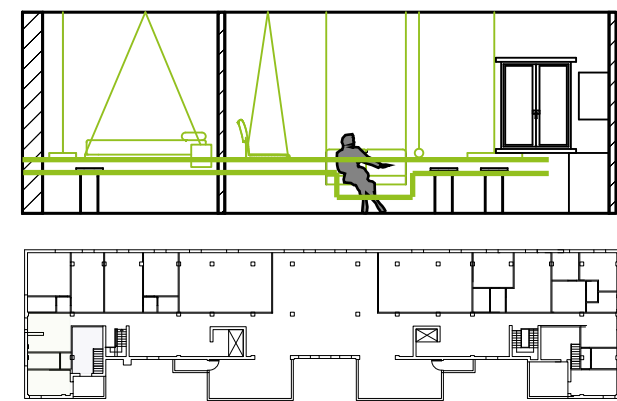
ONE ROOM APARTMENT



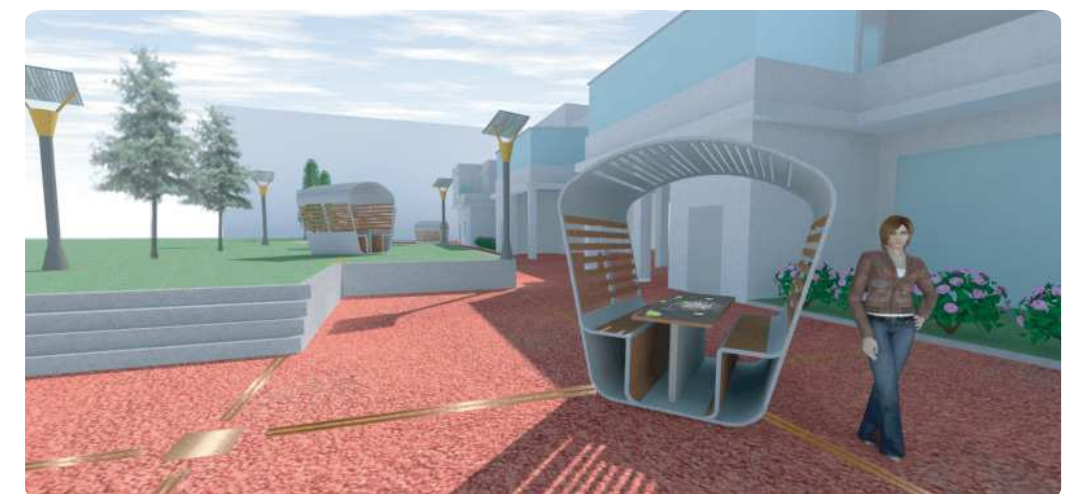
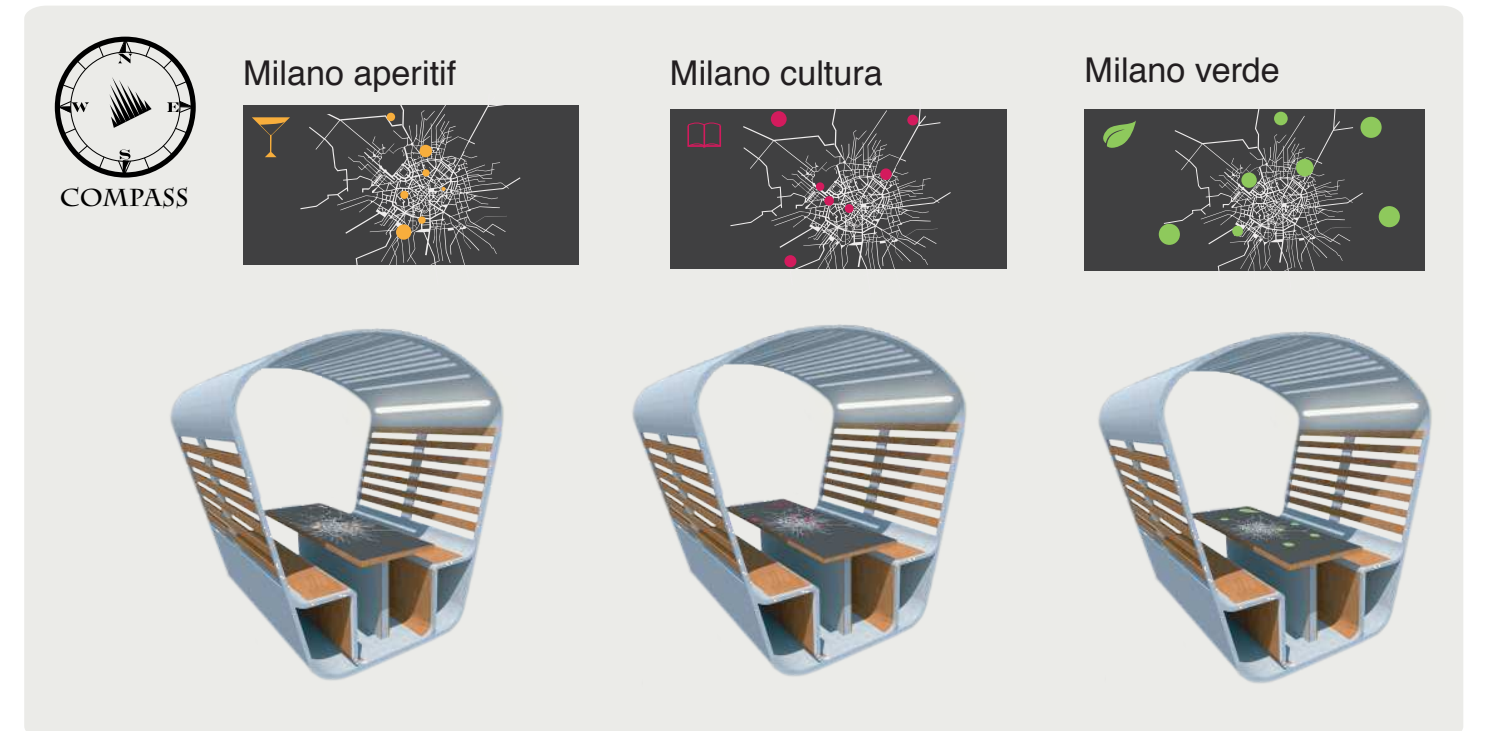
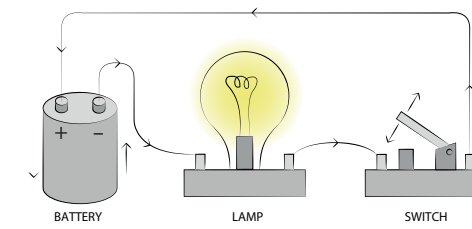
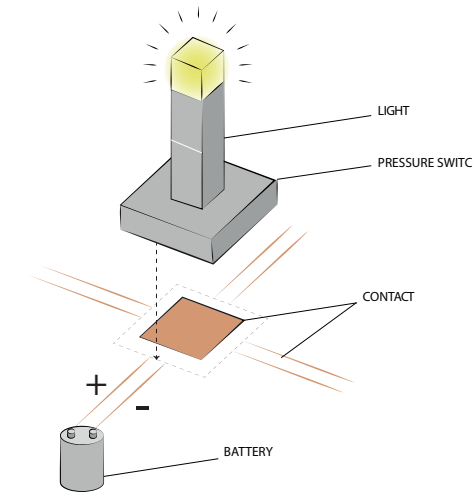
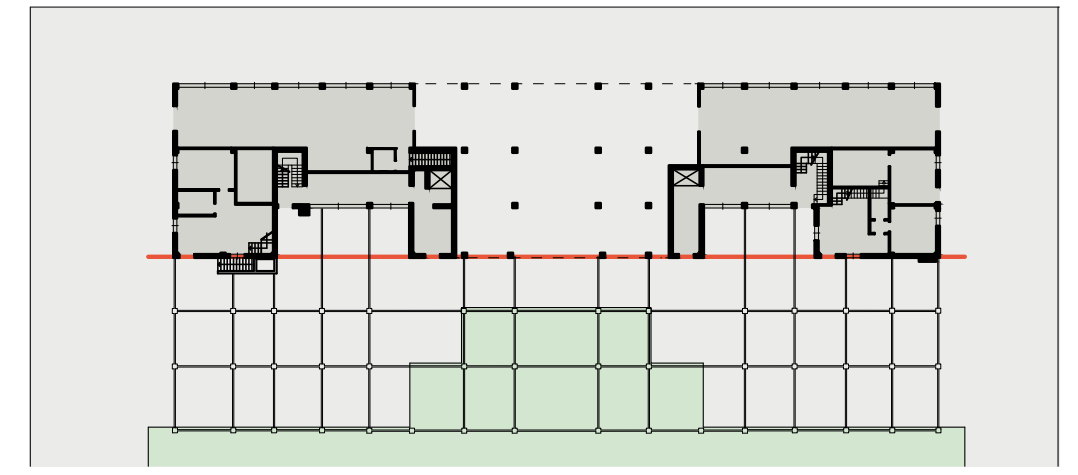
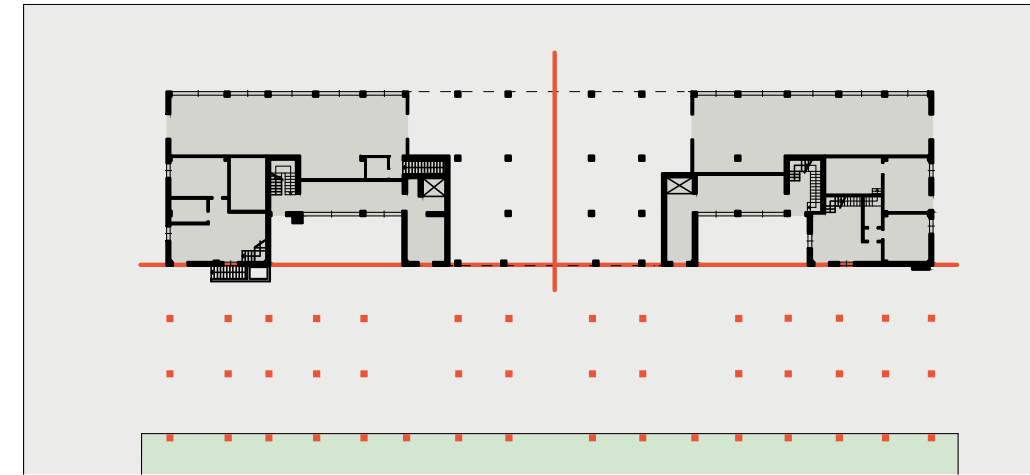
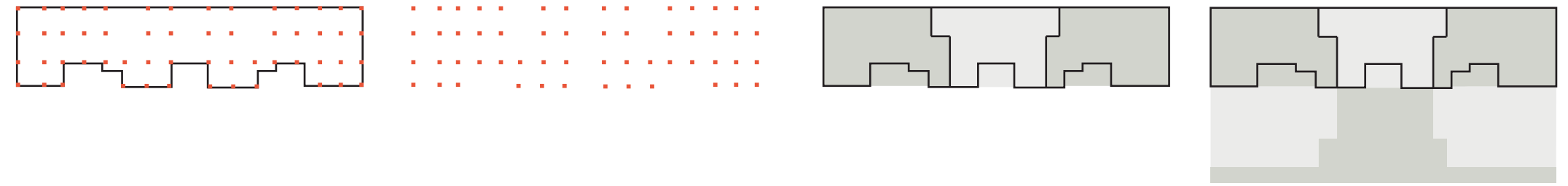
DUPLEX APARTMENT



Stanza di
soggiorno 1949
Franco Albini



Balance Square



BALANCE is done through the Symmetry and balance between FULL and EMPTY. The grid of the pillars is the starting point where to find the symmetry and balance with the square. The grid of columns is mirrored in the square behind the last row of pillars used as the axis of symmetry.

Now is the relationship between FULL and EMPTY that needs some balance, so if the grid is mirrored on the square then the relationship between full and empty is reversed.

BALANCE

Luca Magarotto | Francesca Lotteri