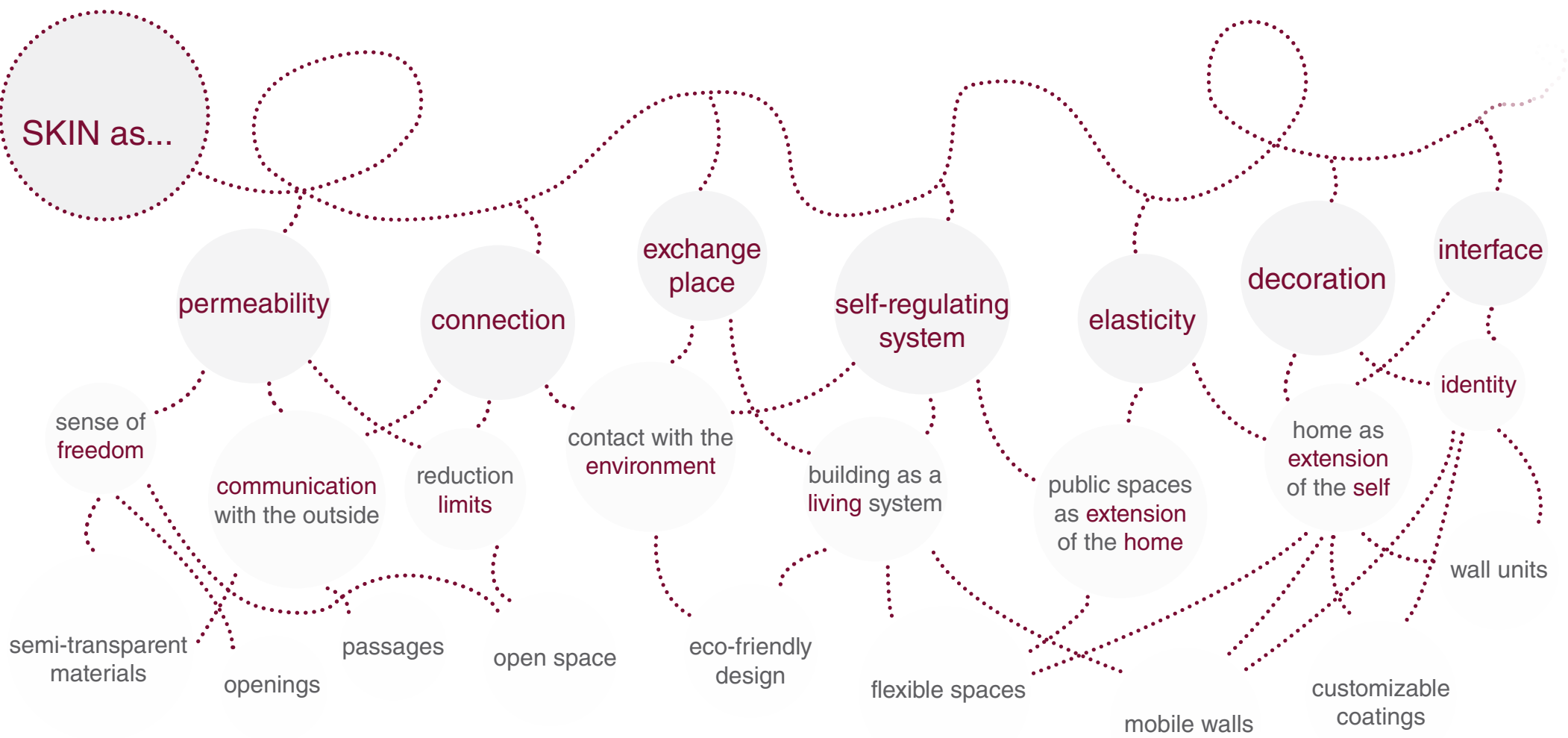


Skin

METAPHOR PROJECT

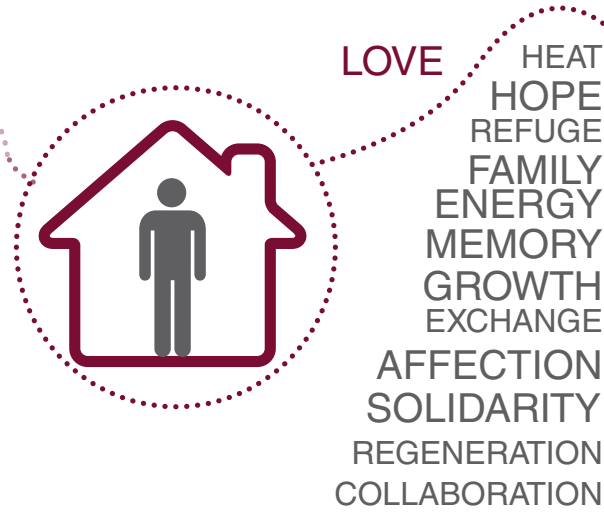


CASE STUDY



USERS

SOLITARY PEOPLE'S NEEDS



GUYS OF REFORMATORY



STUDENTS



SENIORS



1 Layered House, Jun Igarashi

2 Ferrari Museum, J. Kaplicky, A. Morgante

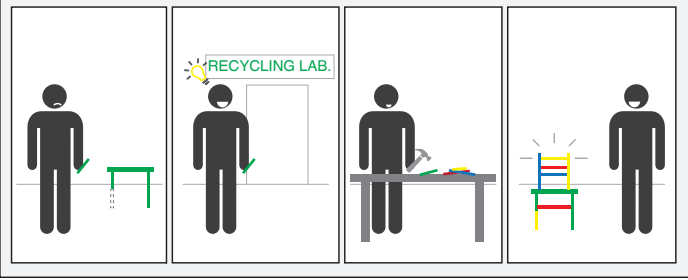
3 VitraHaus, Herzog & de Meuron

4 Park Hill, Hawkins/Brown, Studio Egret West, Grant Associates - Sheffield

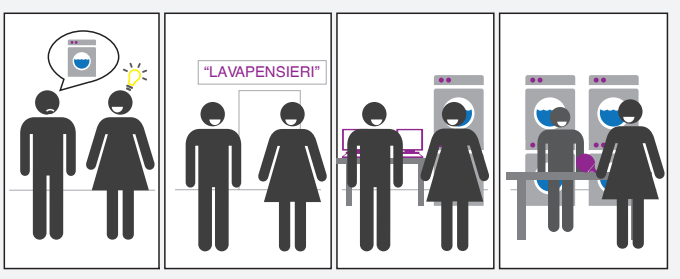
ACTIVITIES & SERVICES / MASTERPLAN



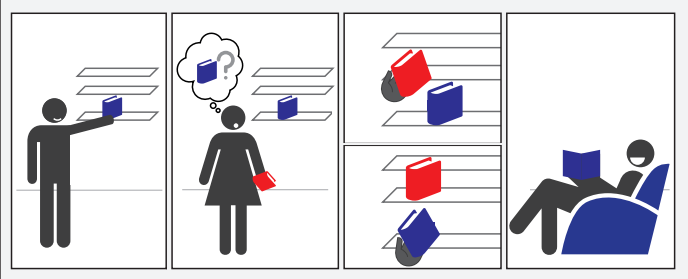
STORAGE "PRENDI E SPORTA VIA"
Storage of sports equipment for rent reserved for residents. *Prendi e sporta via* is an Italian pun for take away.



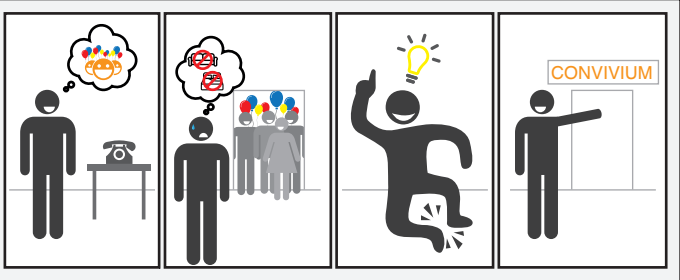
RECYCLING LABORATORY
Space for DIY ("do it yourself") activities, recovering mostly recycled materials and old products to get over.



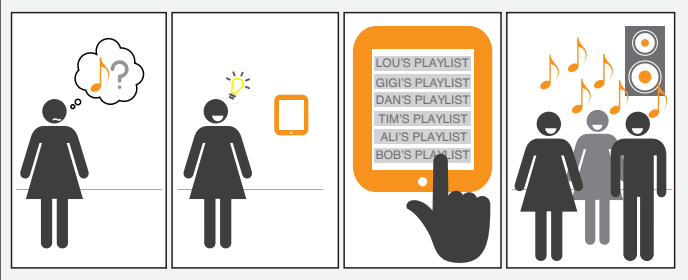
LAUNDRY "LAVAPENSIERI"
Laundry and ironing condominium combined with recreational and cultural activities (games, PC stations). *Lavapensieri* is a pun that means "wash your thoughts".



"BARATTOTECA"
Spot spaces strewn through the building where to share old objects like books, CDs, DVDs, recipes... *Barattoteca* means showcase for exchange.



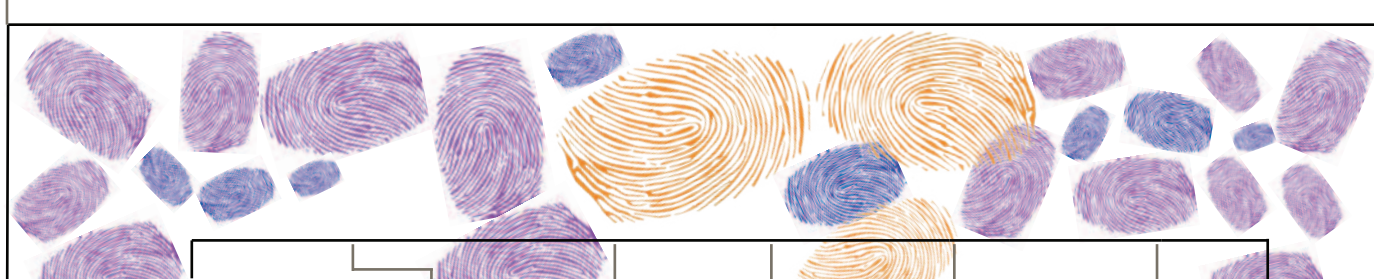
CONVIVUM
Space for receiving guests for meals, thanks to a common kitchen, and for the night in small bedroom. *Convivium* is a Latin word which means "banquet".



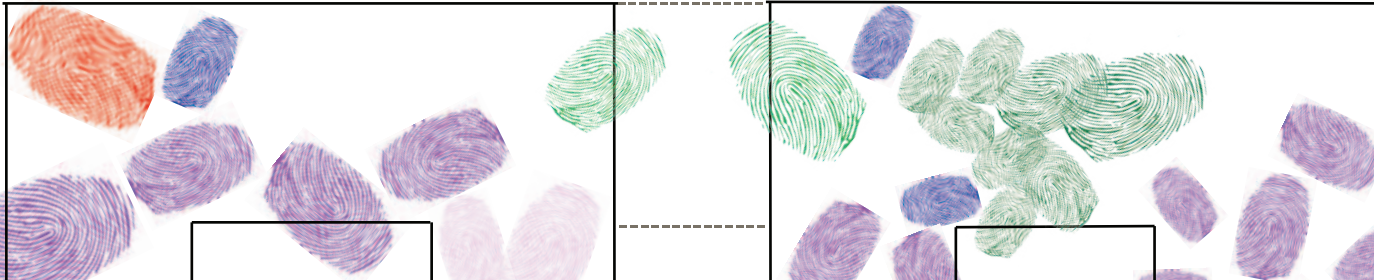
"JUKEBOX"
Wireless system in the public spaces of the building that allows residents to listen and share music playlists.



roof



1st floor



ground floor



THE PROJECT IN NUMBERS



Bottom-to-top flats

DUPLEX TYPE



VIEWS - HOW THE STAIR-STORAGE SYSTEM WORKS

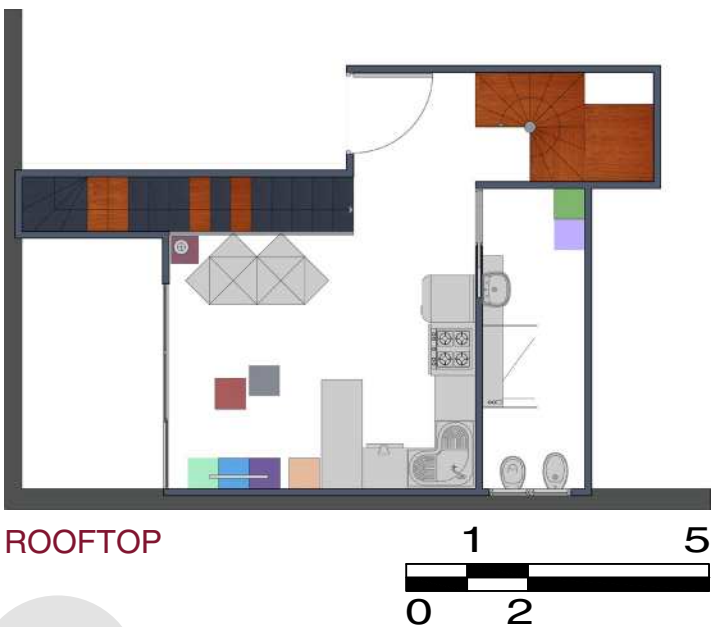


colour based furniture

space saving stairs for basic furniture storage

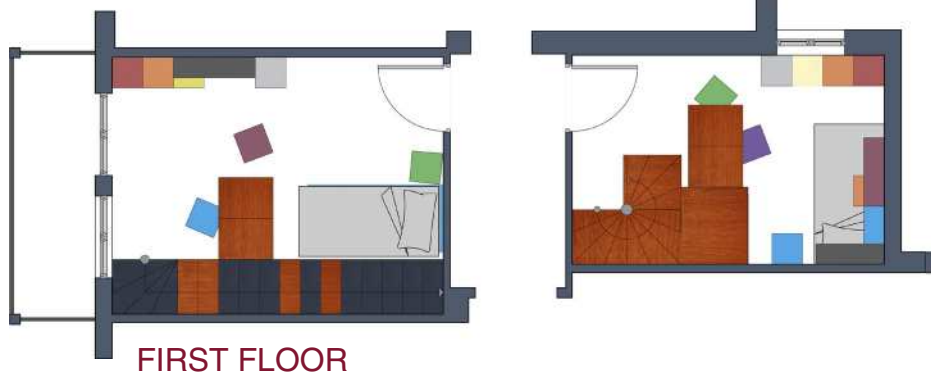
coloured texture on floor/walls

two floors house

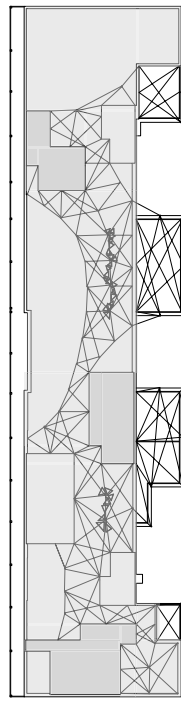


ROOFTOP

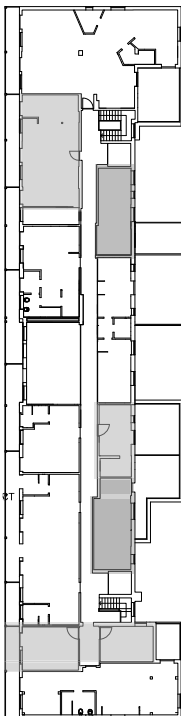
1 5
0 2



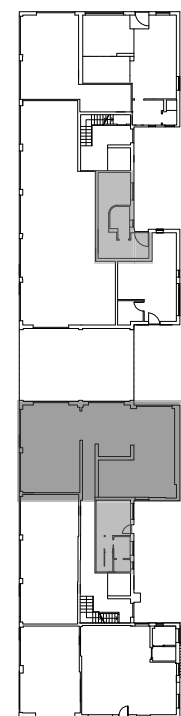
FIRST FLOOR



ROOFTOP



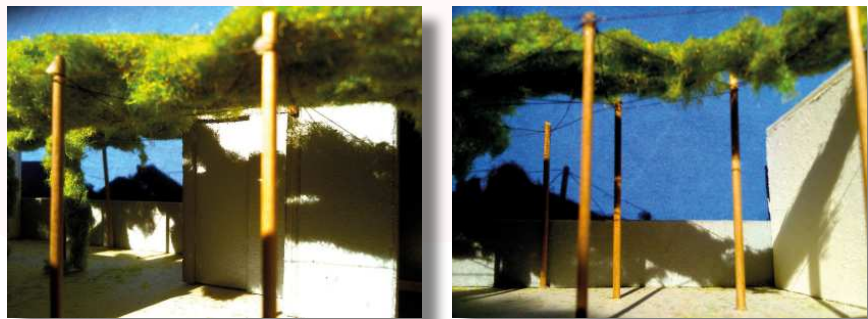
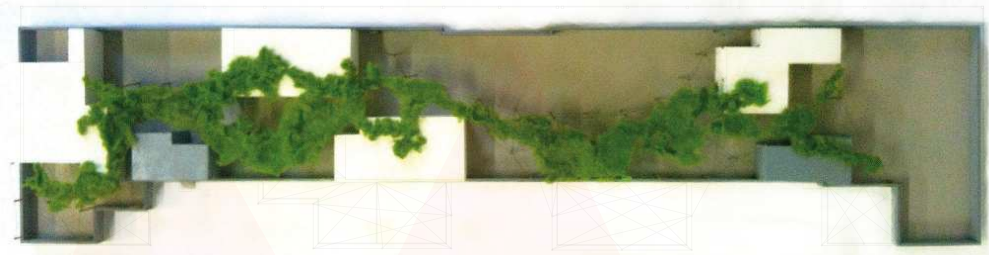
FIRST FLOOR



GROUND FLOOR

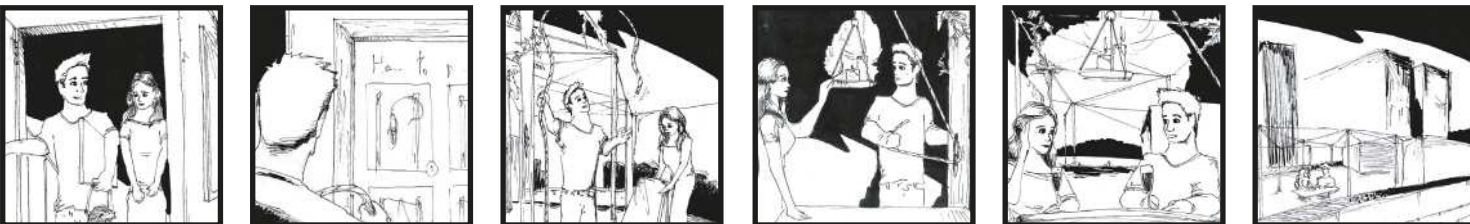
Shared spaces

GREEN NET - ROOFTOP GARDEN

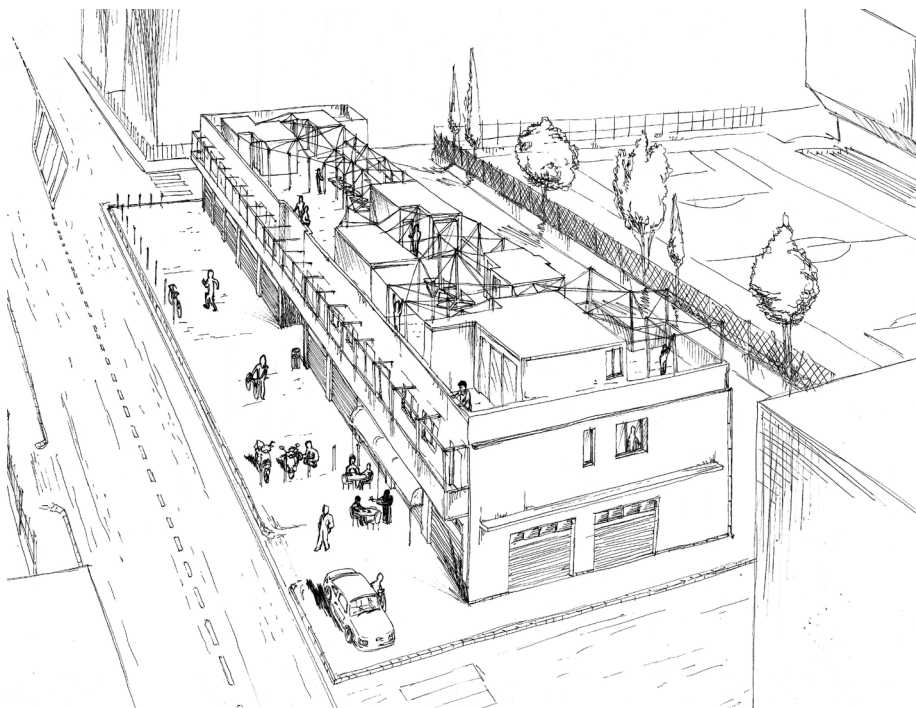


VIEWS - VIEWS OF THE ROOFTOP GREEN NET SYSTEM

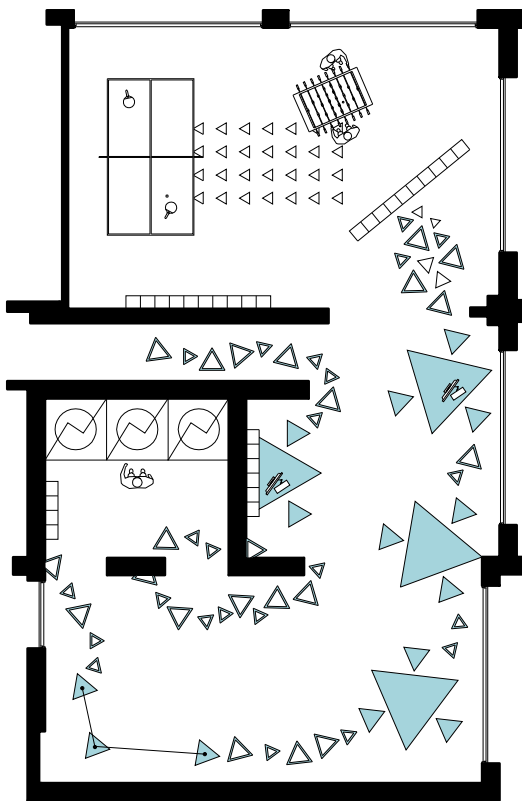
STORYBOARD - WHAT ARE YOU GONNA DO HERE?



SKETCHING



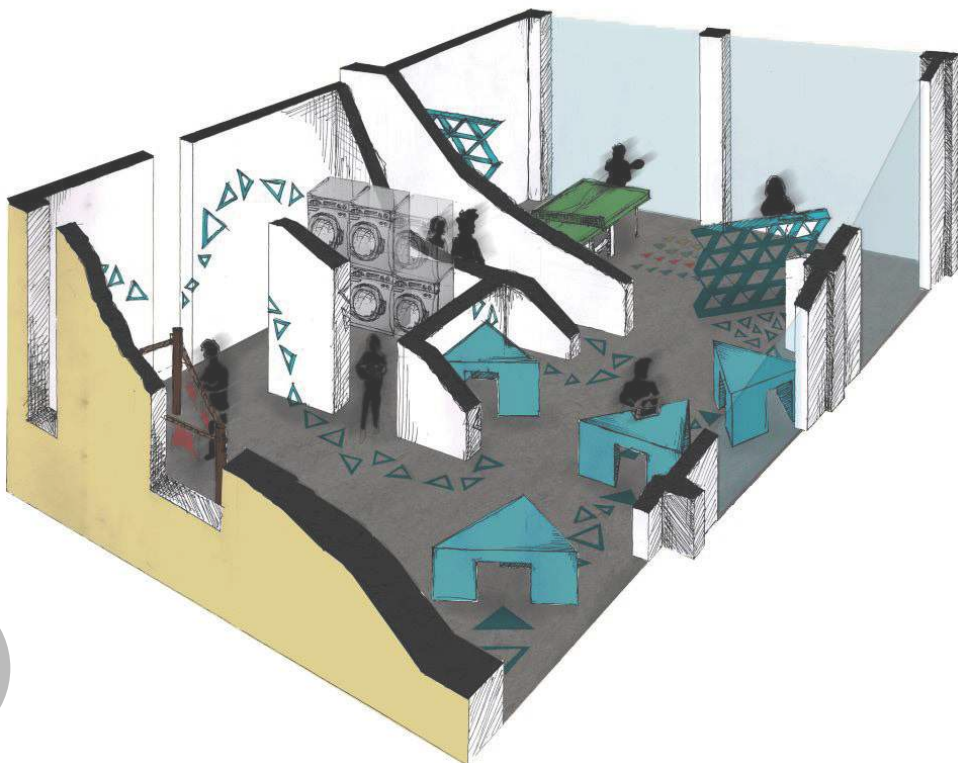
LAVAPENSIERI



STORYBOARD - WHAT ARE YOU GONNA DO HERE?



SKETCHING



geometric shapes on floors/walls as guides

multi-task space for residents

lightful space

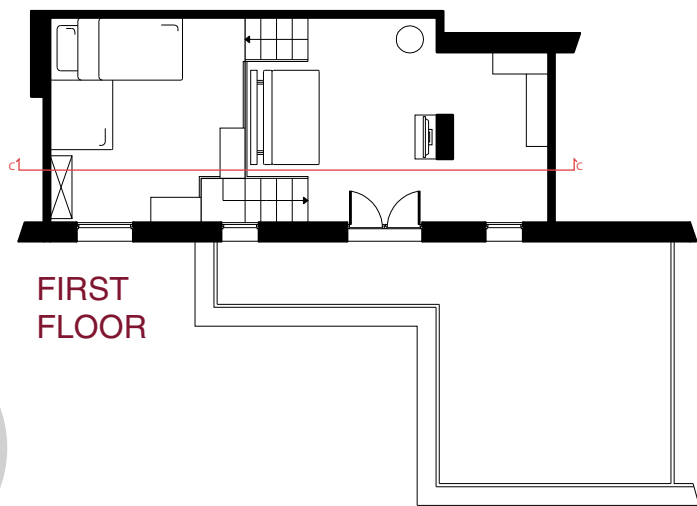
“TRIPLEX” TYPE



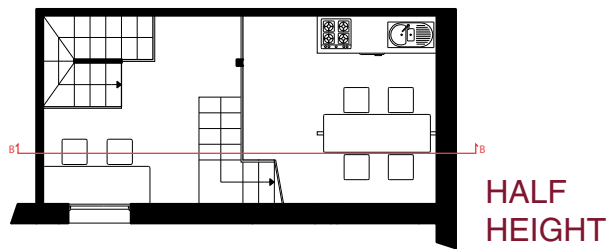
natural materials

different rooms in different height levels

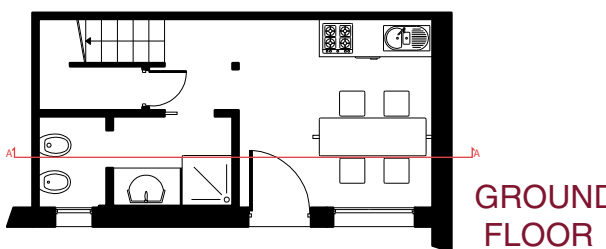
light walls



FIRST FLOOR



HALF HEIGHT



GROUND FLOOR



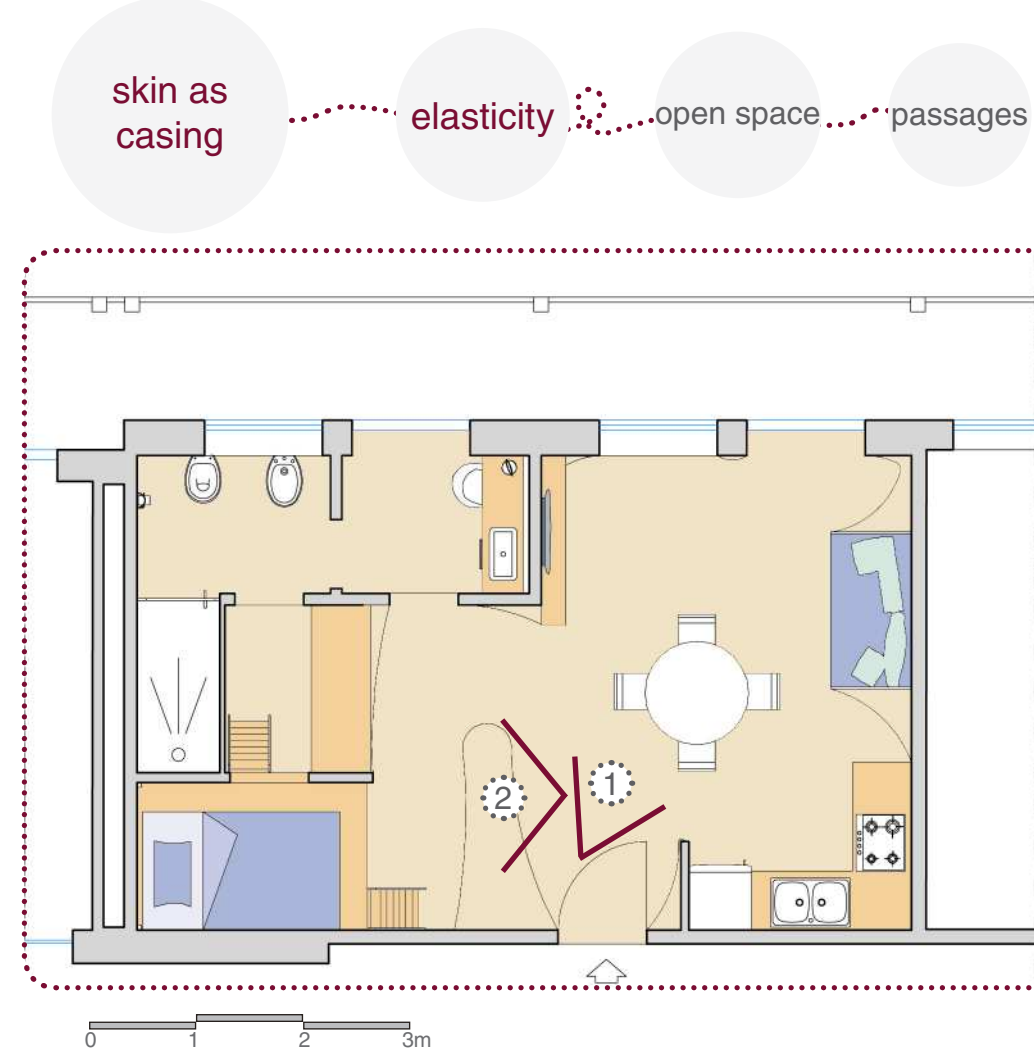
VIEWS - DISPOSITION OF THE DIFFERENT HEIGHT LEVELS

Elastin spaces

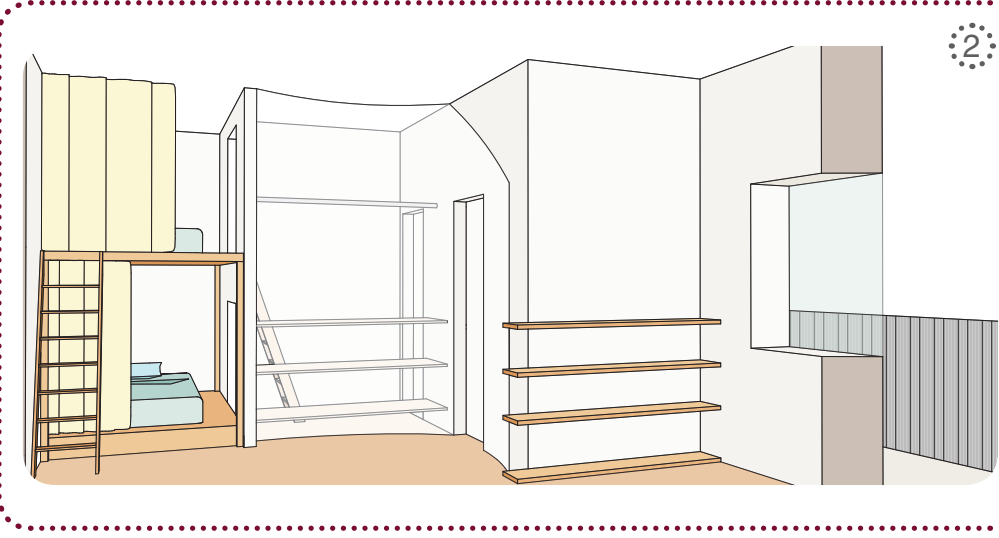
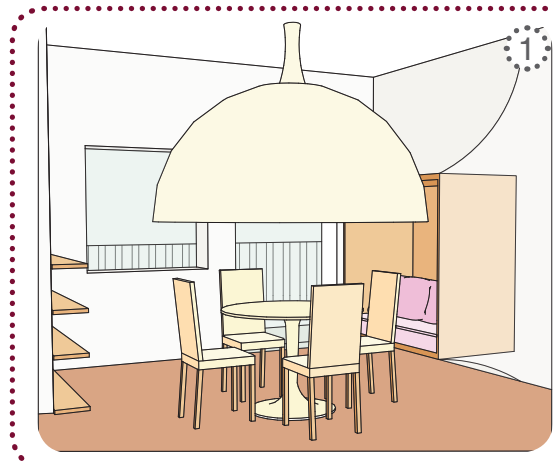


The elastin guarantees the skin to return to its original size after a traction

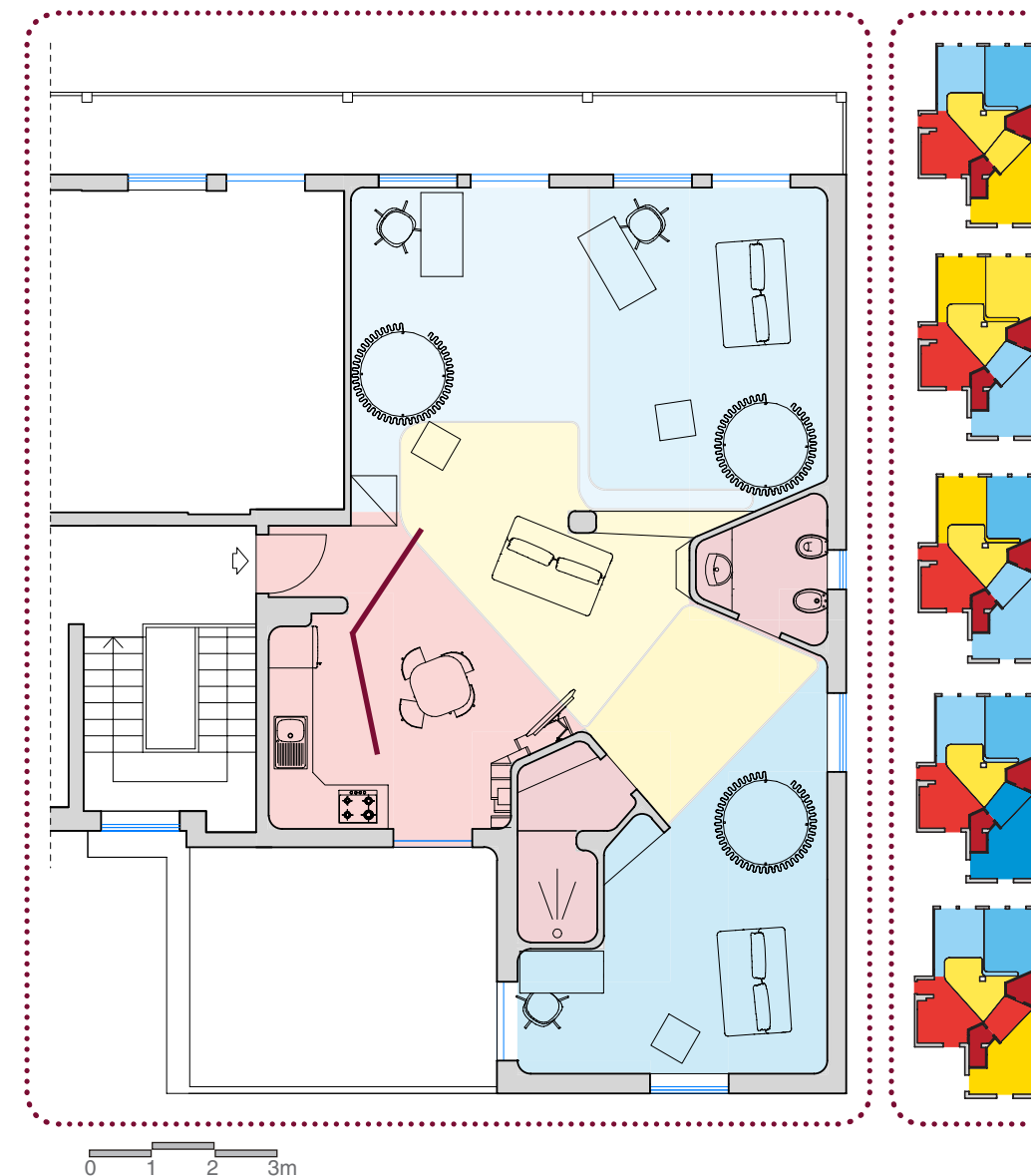
ONE-ROOM APARTMENT



This house is entirely covered with elastane to create the idea of protection, refuge and warmth of maternal embrace.



"BHOLOCALE"



self-regulating system

flexible spaces

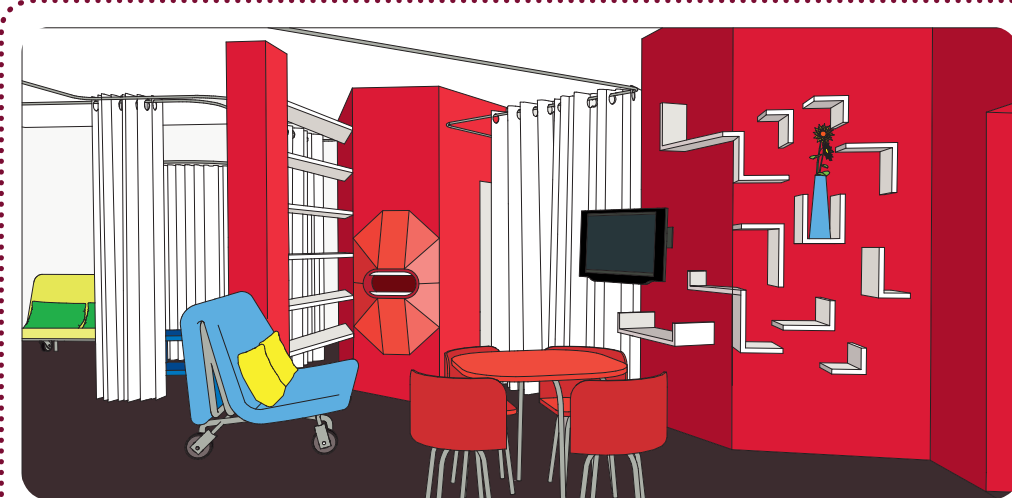
solid space

vs

fluid space

furniture on wheels

Bho means "I don't know." Bholocale has undefined numbers of rooms. With curtains on a rail system, users can create the rooms. Thanks to the furniture on wheels, the home layout is free.



Collagen spaces



The collagen allows the extension of the skin

CONVIVIUM

self-regulating system

connection

exchange place

communication with the outside

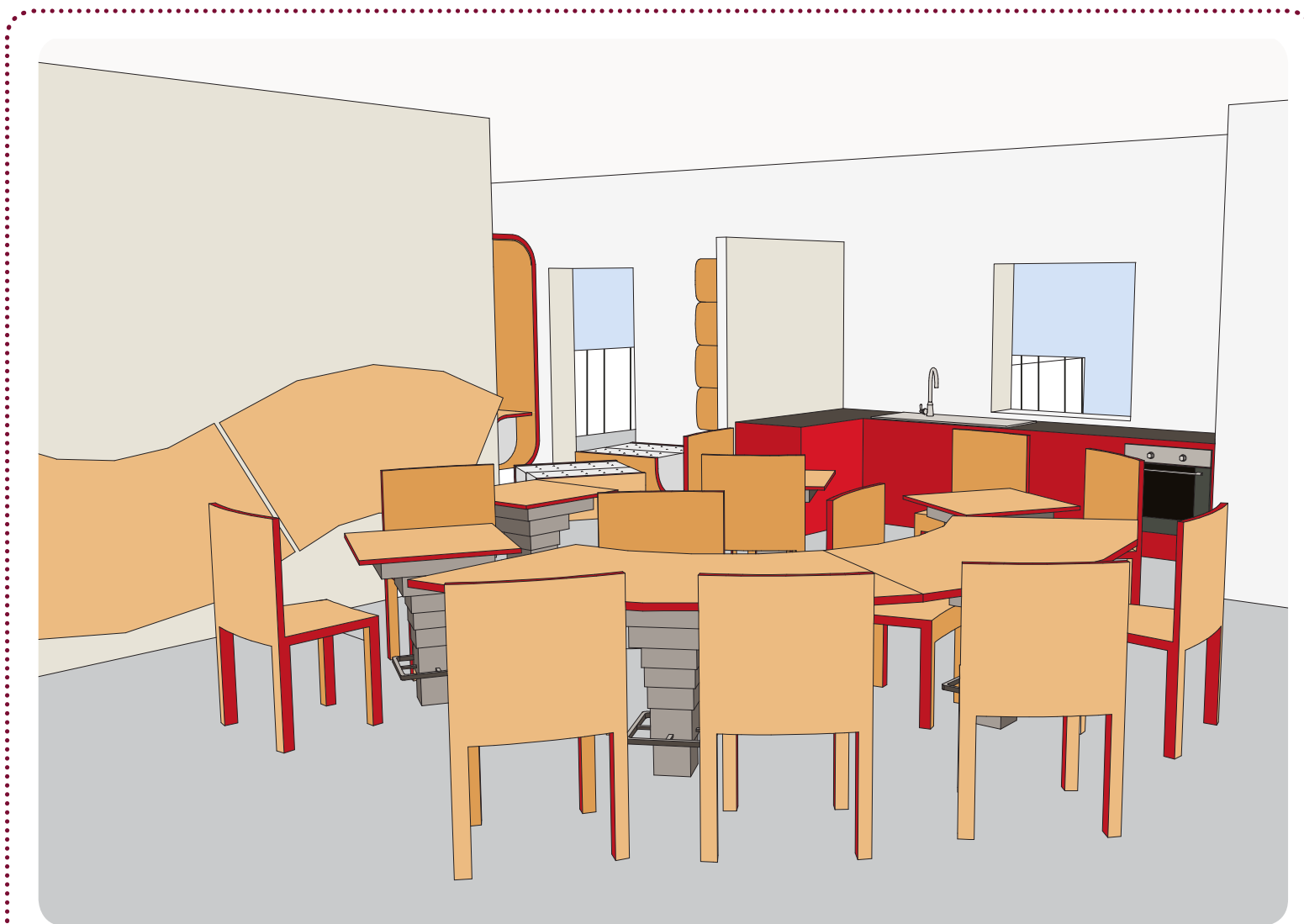
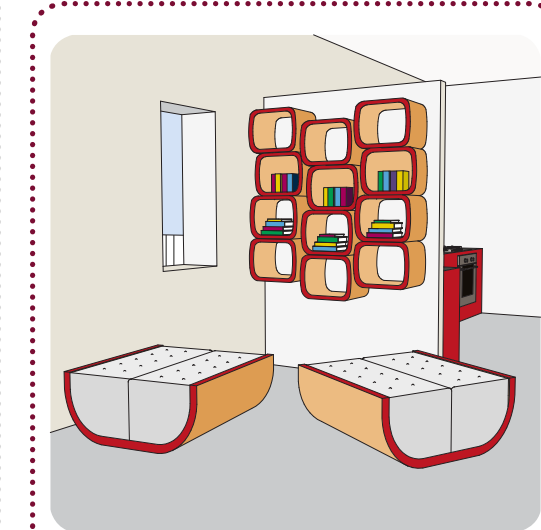
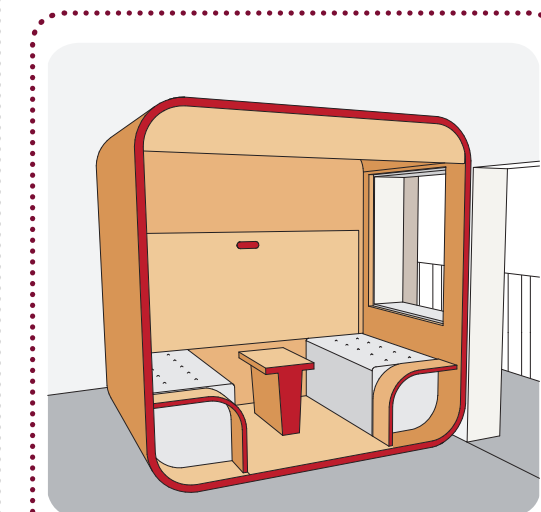
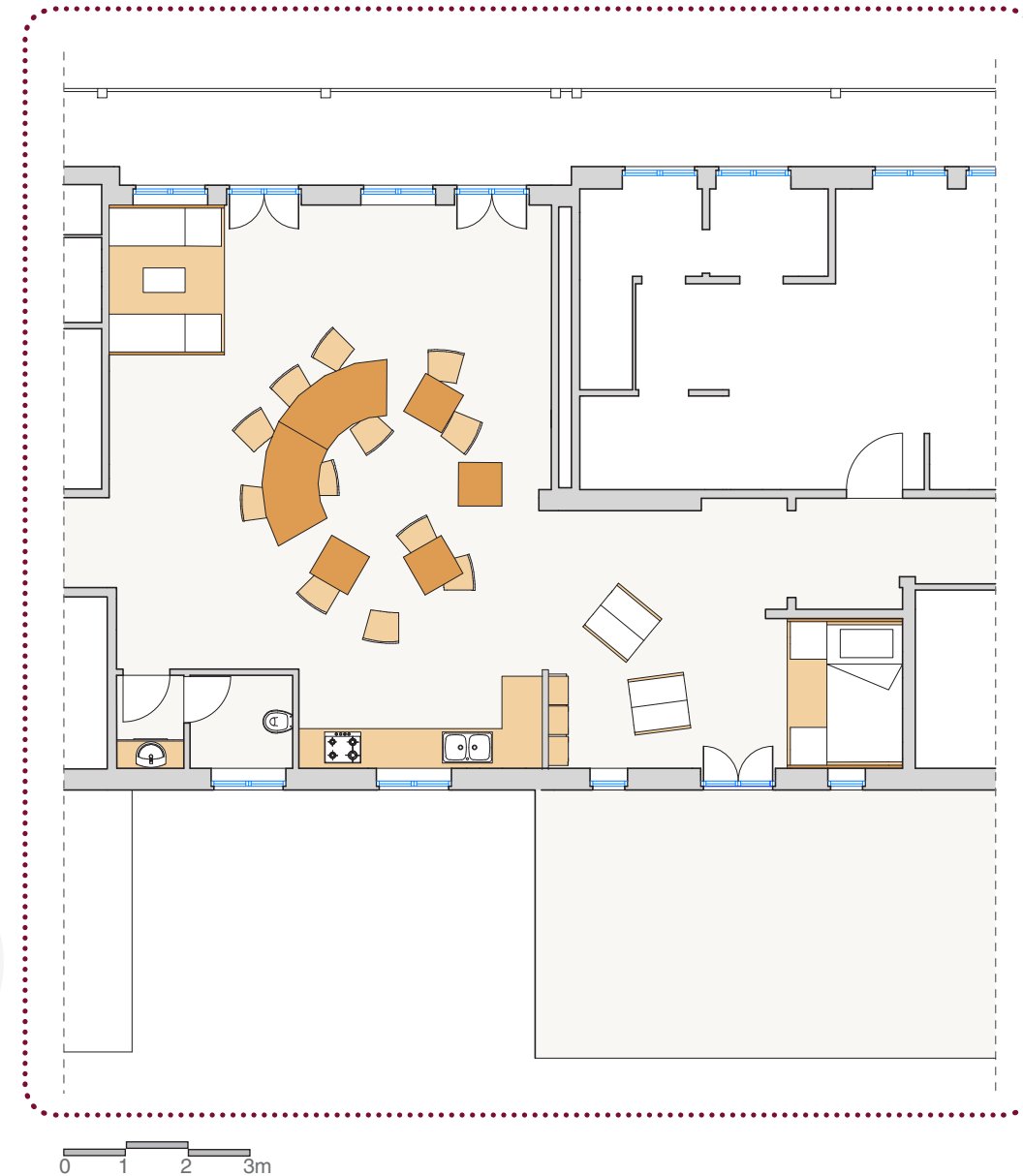
reduction limits

open space

building as a living system

public spaces as extension of the home

The *Convivium* offers a pleasant space for cooking, eating and relaxing with friends. Here there are also a *Barattoteca* and two modules, which allow to give ospitality also for the night.



SKIN

F. Ippoliti | C. Landi

First floor houses

SENIOR'S APARTMENT



hallway as optical cone

zoning through surface depth

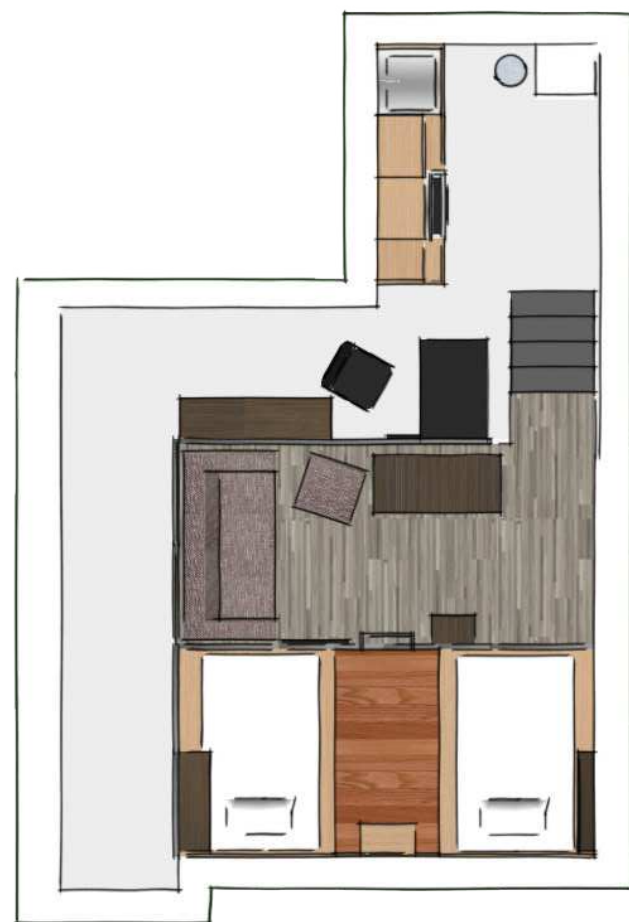
darken of furniture's colour

bulging furniture

VIEWS



STUDIO APARTMENT - VERTICAL LAYERING



upper storey structure

rooms divided into different height levels

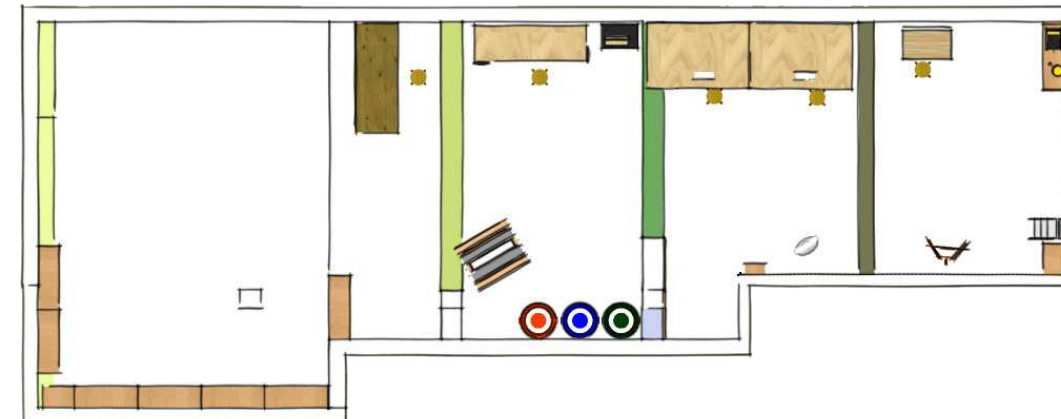
wall units

VIEWS



Recycling laboratory

RECYCLE LABORATORY



open to fellow occupants

formation courses

basic working gear

fellow occupants can make, trade and display recycled objects between themselves

stands for public exhibition

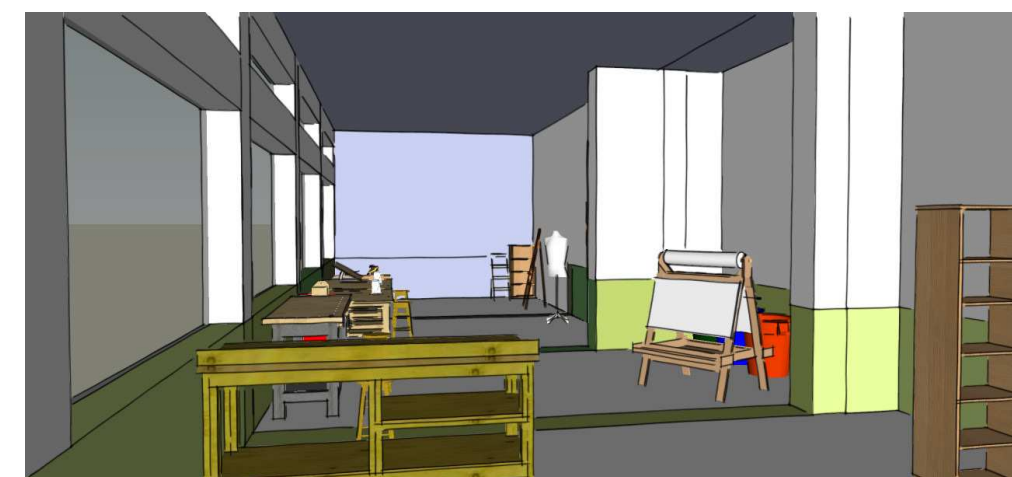
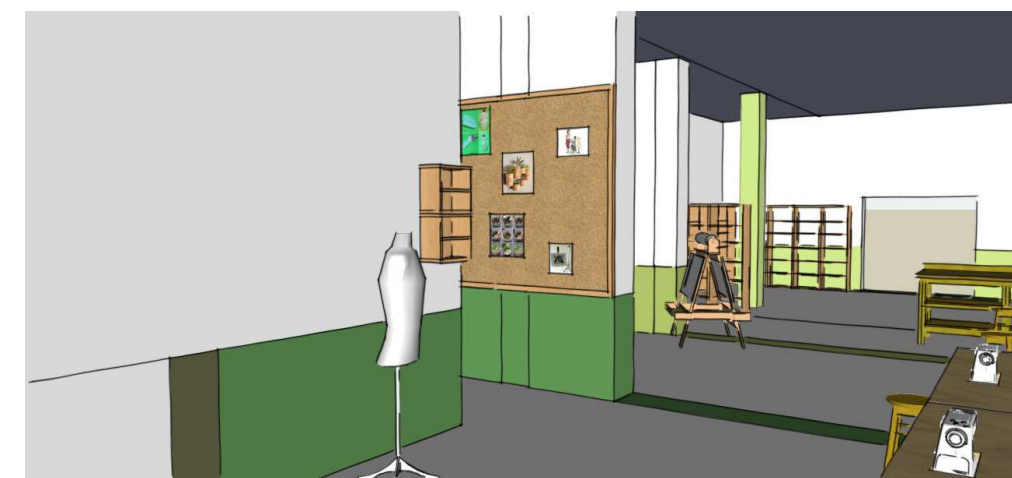
only pedestrians on the rear side

public garden for the occupants

REAR EXTERIOR - EXHIBITION



VIEWS



SKIN

M. Geppetti | A. Giannoulidis